

**FOR SIMULATOR  
USE ONLY**

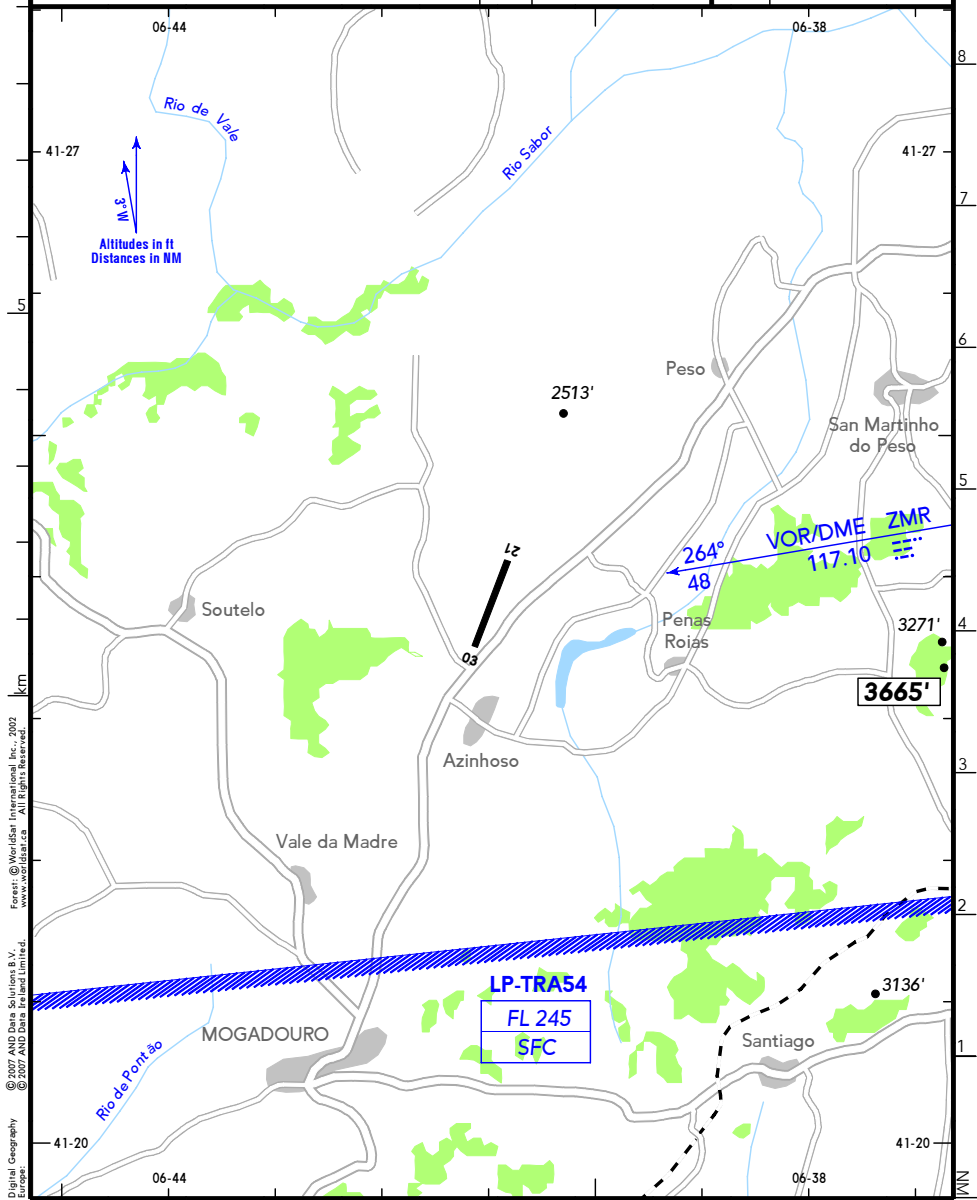
19-1

**MOGADOURO**  
MOGADOURO  
**PORTUGAL**

**LPMU**  
Elev **2347'** / 715m  
N41 23.8  
W006 41.0      3.5 NM NNE Mogadouro

(Radio)  
MOGADOURO RADIO **120.00**

|     |     |     |     |
|-----|-----|-----|-----|
| RWY | ILS | RWY | ILS |
|     |     |     |     |



© 2007 ANI, Data Suppliers B.V.  
 © 2007 AND Data Suppliers B.V.  
 Digital Geography Europe  
 Forest: © WorldAid International, Inc., 2002  
 www.worldaid.com All rights reserved.

CHANGES: New Chart.

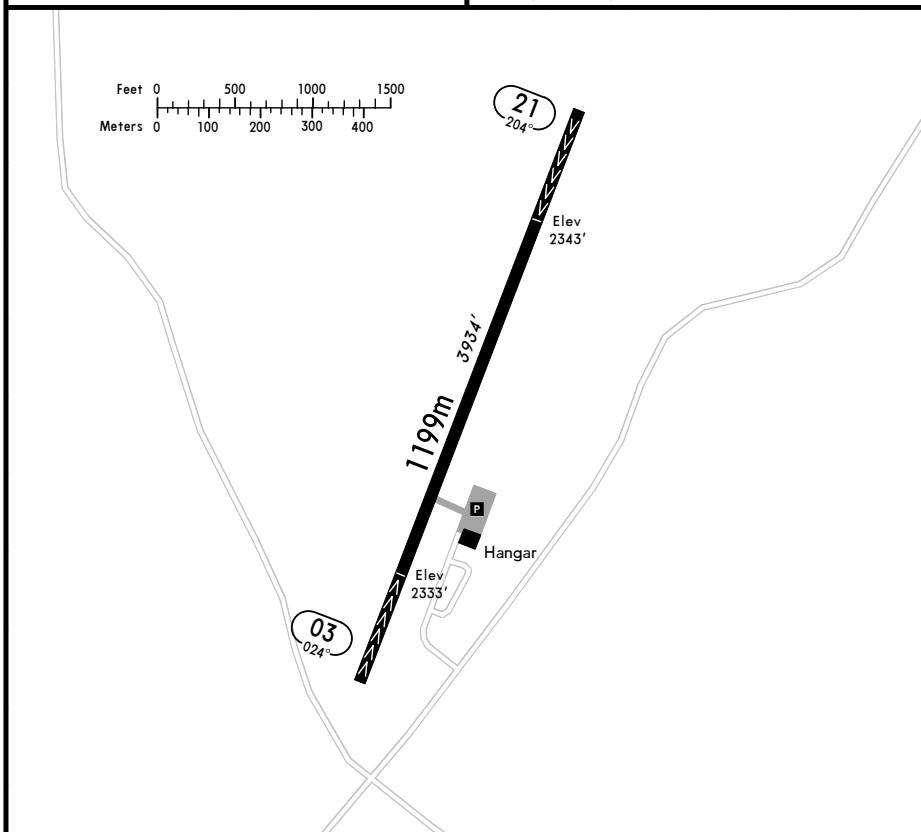
**FOR SIMULATOR  
USE ONLY**

19-2

**MOGADOURO**  
MOGADOURO  
**PORTUGAL**



LISBOA INFORMATION **123.75**



| RWY No | Dimension (m) - Surface | TORA (m) | LDA (m) | Strength  | Lights |
|--------|-------------------------|----------|---------|-----------|--------|
| 03     |                         | 981      | 749     | MTOW 5.7t | —      |
| 21     | 1199 x 23 Asphalt       | 974      | 749     |           |        |

CHANGES: New Chart.