

**FOR SIMULATOR
USE ONLY**

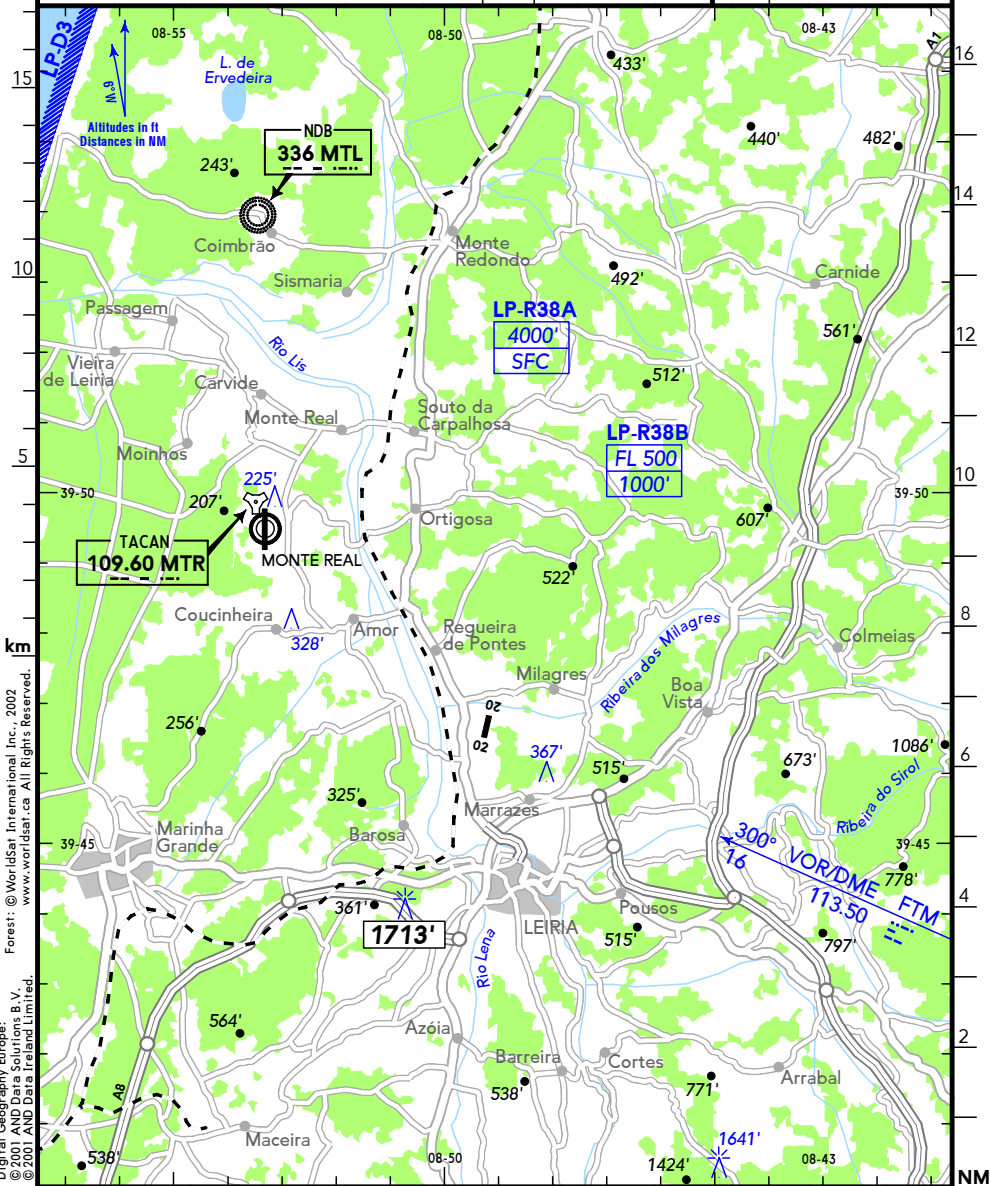
19-1

LEIRIA

LPJF GANDARA DOS OLIVAIS
Elev **146'**/45m
PORTUGAL
N39 46.8
W008 49.3
2 NM NNW Leiria

MONTE REAL TOWER **122.10**

RWY	ILS	RWY	ILS



km
Digital Geography Europe: © 2001 AND Data solutions B.V. © 2001 AND Data Ireland Limited.
Forest: © WorldStar International Inc., 2002 www.worldstar.ca All Rights Reserved.

CHANGES: OBST & Spot elevation - Topography.

© JEPPESEN SANDERSON, INC., 1989, 2003. ALL RIGHTS RESERVED.
BOTTLANG AIRFIELD MANUAL

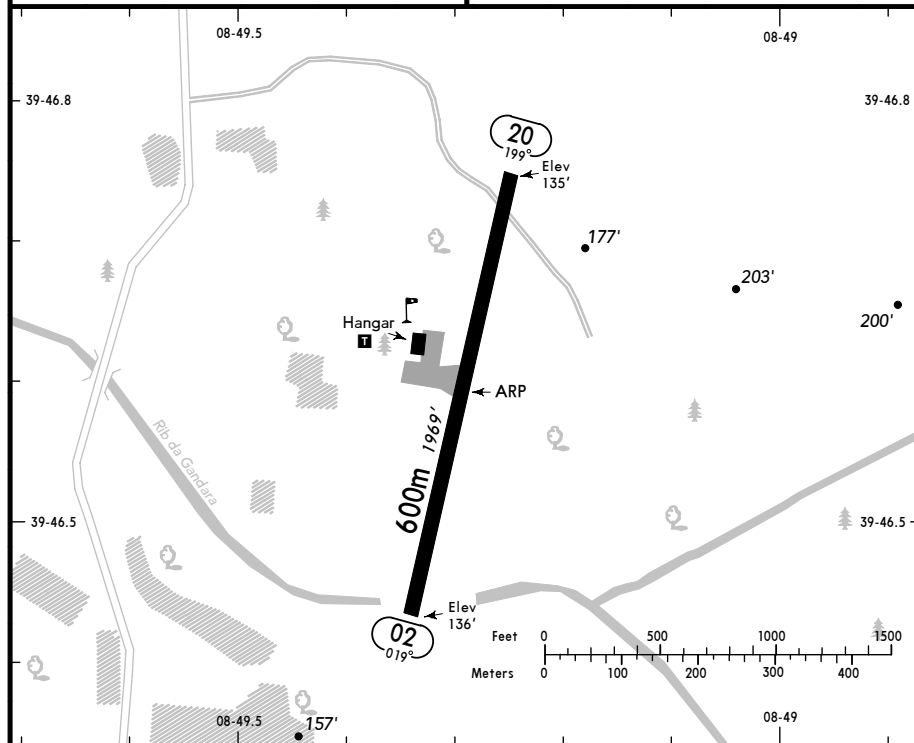
**FOR SIMULATOR
USE ONLY**

19-2

LEIRIA
GRANDARA DOS OLIVAIS
PORTUGAL



(FIS)
LISBOA INFORMATION **123.75**



TAXI

RWY No	Dimension (m) - Surface	TORA (m)	LDA (m)	Strength	Lights
02	600 x 12 Asphalt	600	600	3.5t SIWL	—
20					

Caution: Power lines 1300m in front of RWY 02, up to 400'.
RWY 02 preferential for landing due to crossing street.
Circuit RWY 20 right hand.
All traffic circuits should be performed to the W of the AD, to avoid overflying of Marrazes village, due to Obstacles penetrating the APCH path.
Road is crossing the RWY S of THR 20. RWY may be dirty and slippery due to soil transporting carriers.
Note: Prior notice via phone about ETA mandatory (in portuguese language only).

CHANGES: New layout.

© JEPPESEN SANDERSON, INC., 2003. ALL RIGHTS RESERVED.
BOTTLANG AIRFIELD MANUAL