

**FOR SIMULATOR
USE ONLY**

19-1

ESPINHO
ESPINHO
PORTUGAL

LPIN

Elev **10'**/ 3m

N40 58.5
W008 38.7

1.6 NM S Espinho

Within TMA (C) Porto up to FL 115:

PORTO APPROACH **121.10**

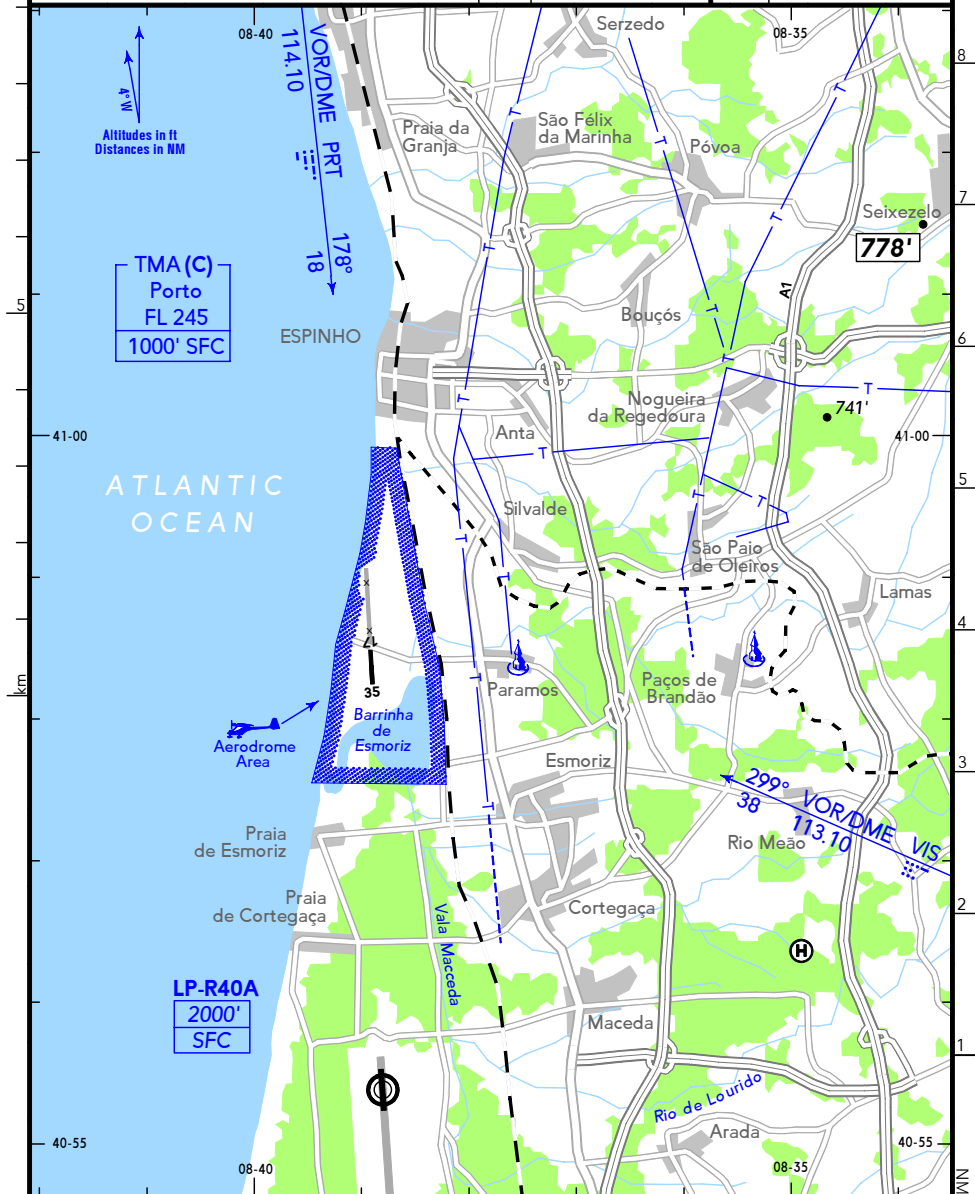
PPR for APCH, LDG & TKOF:

OVAR APPROACH **118.60**

Outside OVAR ATS op hr:

LISBOA INFORMATION **130.90** (MIL)

RWY	ILS	RWY	ILS



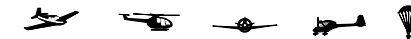
CHANGES: COM - VAR - RWY Designation - OBST - Topography.

© JEPPESEN, 2008, 2009. ALL RIGHTS RESERVED.

**FOR SIMULATOR
USE ONLY**

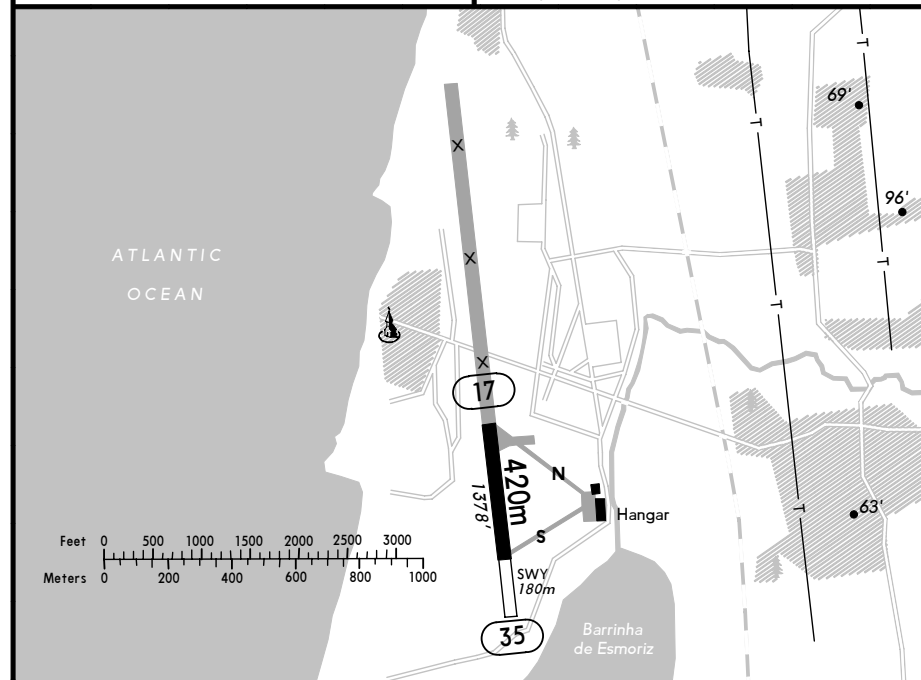
19-2

ESPINHO
ESPINHO
PORTUGAL



(FIS)

LISBOA INFORMATION **123.75**



RWY No	Dimension (m) - Surface	TORA (m)	LDA (m)	Strength	Lights
17	420 x 30 Asphalt	420	420	17t SIWL	—
35					

CAUTION:

Look out for pedestrians and vehicles.

Traffic circuits shall be flown at 700' SFC.
PJE activities on Sat, Sun & Hol.
Model flying takes place.

ULM Procedure:

During OVAR (MIL) op hr, ULM unable to communicate by radio must inform OVAR APP about flying intentions giving following details: Name of Pilot, ACFT type, ETD, duration of flight, altitude, area or route of flight.

MAX height within the AD area depicted on 19-1 is 600' SFC or as instructed/authorised by OVAR APP.
Traffic circuits: 17 RH; downwind leg overhead coastline at 300' SFC.
Parking of ULM only on designated areas and never near the RWY.

CHANGES: RWY Designation - RWY Dimensions - SWY - Declared Distances.

© JEPPESEN, 2003, 2009. ALL RIGHTS RESERVED.