

**FOR SIMULATOR
USE ONLY**

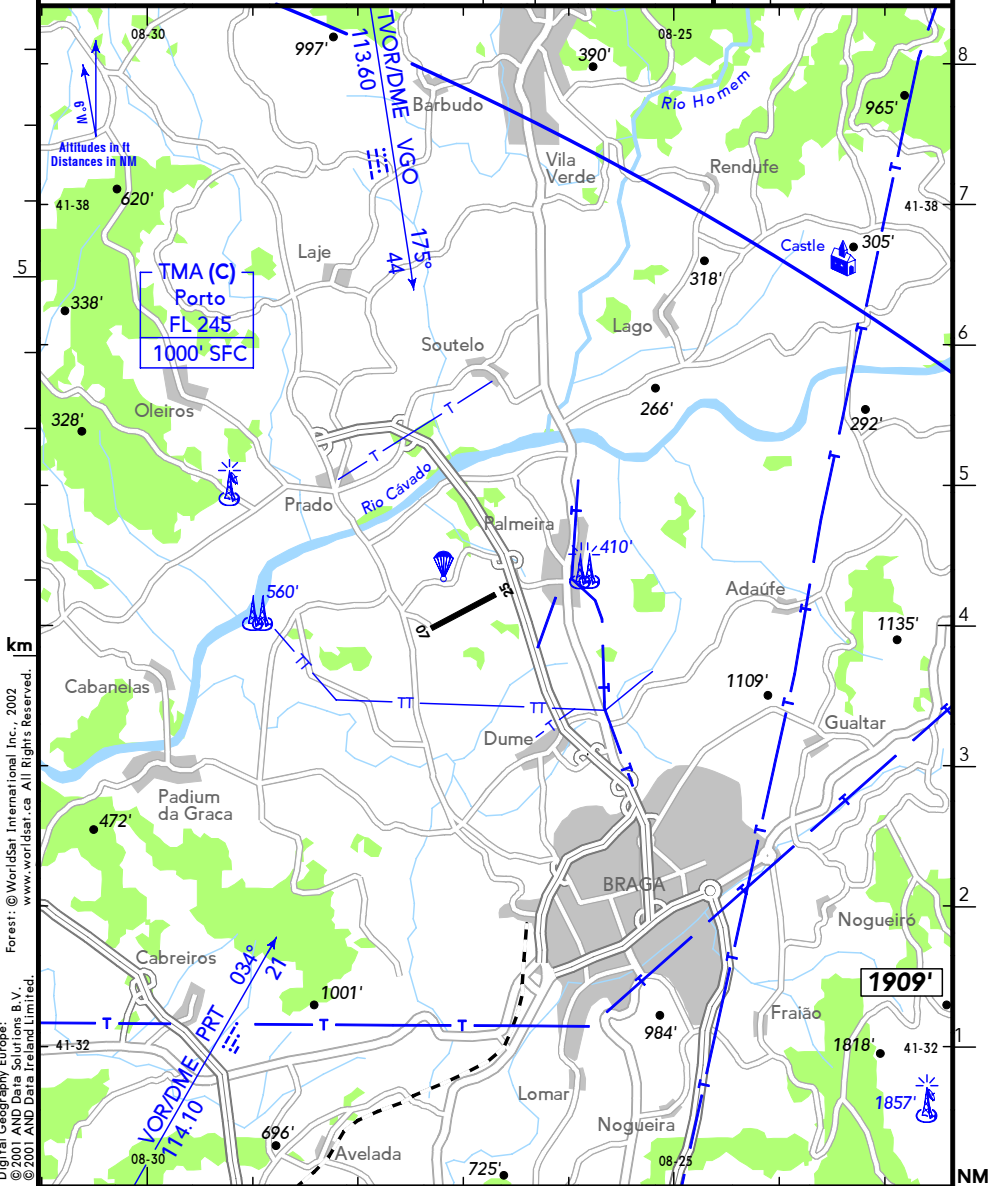
19-1

BRAGA
BRAGA
PORTUGAL

LPBR
Elev **247'**/75m
N41 35.1
W008 27.0
1.6 NM NNW Braga

Clearance for TMA (C) Porto:
PORTO APPROACH **121.10** (pt, en)
(AFIS)
BRAGA RADIO **122.00**

RWY	ILS	RWY	ILS



km
Digital Geography Europe: ©2001 AND Data solutions B.V. ©2001 AND Data Ireland Limited.
Forest: ©Worldstar International Inc., 2002 www.worldstar.ca All Rights Reserved.

CHANGES: New layout - AD coords - Airspace - OBST - Topography.

© JEPPESEN SANDERSON, INC., 2007. ALL RIGHTS RESERVED. BOTTLANG AIRFIELD MANUAL®

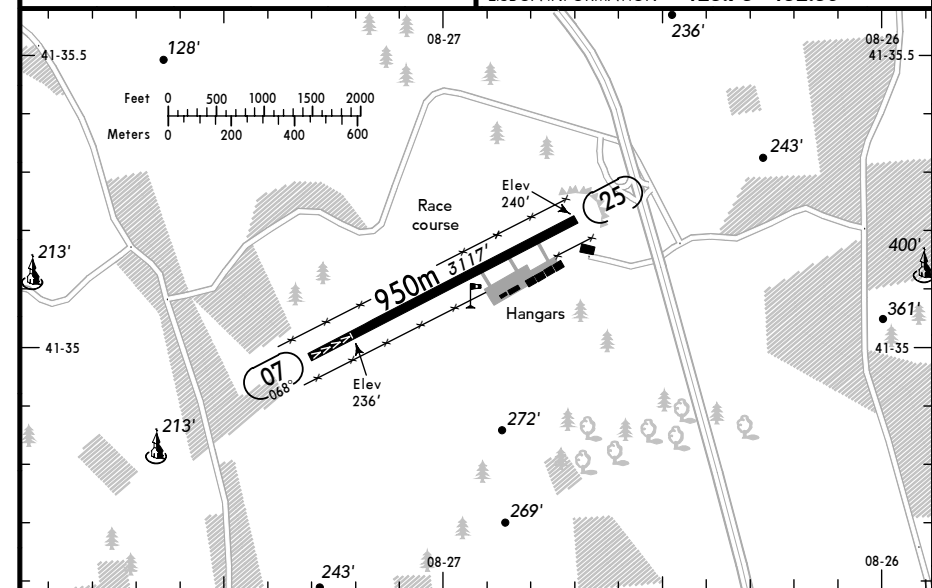
**FOR SIMULATOR
USE ONLY**

19-2

BRAGA
BRAGA
PORTUGAL



(FIS)
LISBOA INFORMATION **123.75 132.30**



IBN - PAPI - THRL - RL.

RWY No	Dimension (m) - Surface	TORA (m)	LDA (m)	Strength	Lights
07		950	800		
25	950 x 25 Asphalt	950	950	8t SIWL	

RWY 25: Right hand circuit at 750'.
Pay attention to parachute activity.

CHANGES: New layout - FIS - AD facilities & services - Topography - OBST - Text.

© JEPPESEN SANDERSON, INC., 2007. ALL RIGHTS RESERVED. BOTTLANG AIRFIELD MANUAL®