

Airport information:

Country: Portugal

City: SAO JORGE

Coordinates: N 38° 39.8', W 028° 10.2'

Elevation: 338

Customs:

Fuel:

RFF:

hours: 0900-1200 & 1400-1700

Runways:

Runway 13

Takeoff length: 1310, Landing length: 1250

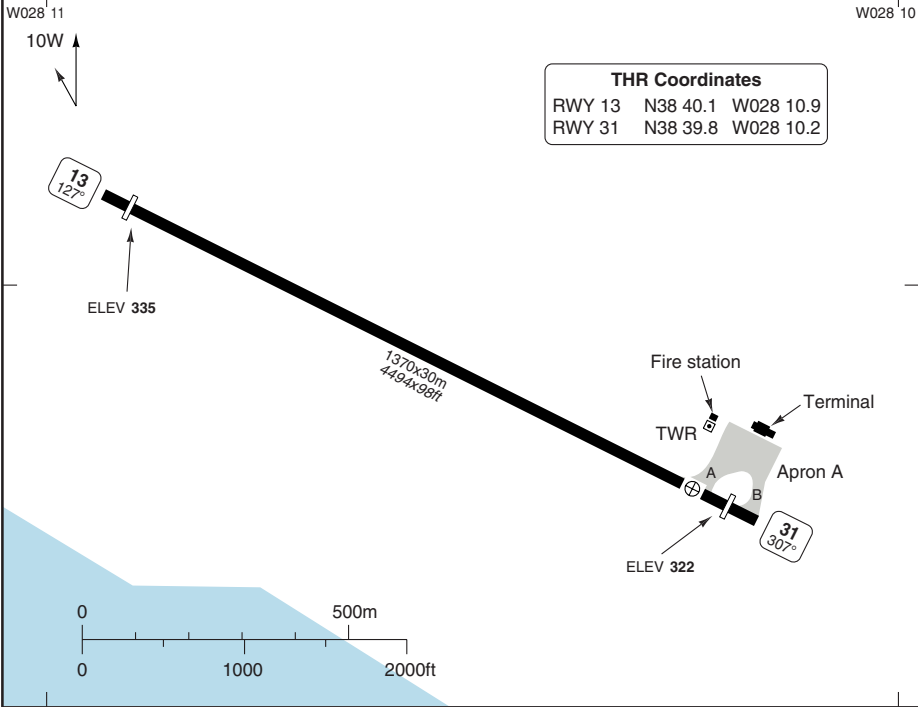
Runway 31

Takeoff length: 1310, Landing length: 1250

AERODROME

Sao Jorge INFO 122.3	Horta TWR 118.0	APP 120.6
--------------------------------	---------------------------	---------------------

AD Elev 335	ARP: N38 39.8 W028 10.2	AD HR: HO
--------------------	-------------------------	-----------



RWY	Slope	TORA m/ft	LDA m/ft	ALS	REDL	Additional
13	0	1310 / 4297	1250 / 4101	-	-	P 3° (48)
31	0	1310 / 4297	1250 / 4101	-	-	P 3° (48), REIL

GENERAL INFORMATION

1. AD RESTRICTIONS

- 1.1. This is a NON-CONTROLLED AD.
- 1.2. VMC and daylight OPS only.
- 1.3. All authorizations must be obtained through Horta TWR/APP.
- 1.4. Two way communication required.
- 1.5. Ground raised rapidly very close to the AD. This fact generates very often turbulence and windshear.
- 1.6. Due to high terrain, flights are not permitted north of RWY.

2. CIRCUITS

Right hand RWY 13.

3. WARNING

Watch out for birds.

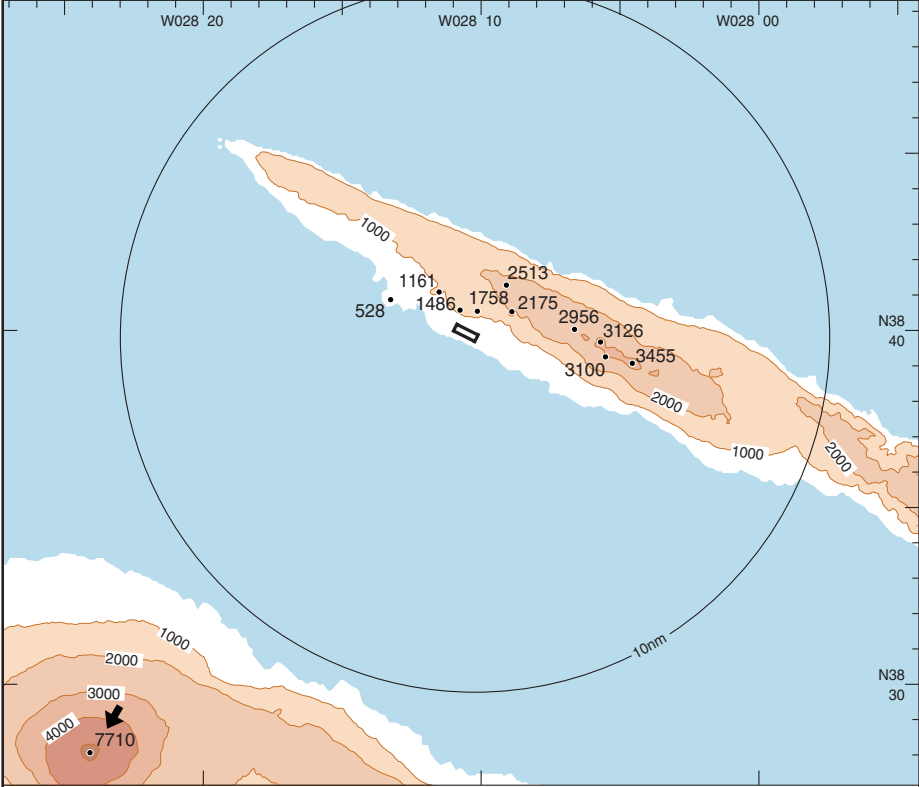
4. DEPARTURES

Contact Horta APP prior TKOF to obtain ATC clearance and traffic information:

VICINITY CHART

Horta APP 120.6	TWR 118.0	Sao Jorge INFO 122.3
---------------------------	---------------------	--------------------------------

AD Elev 335	TL ATC	TA 5000
--------------------	---------------	----------------



NO PUBLISHED PROCEDURES