

Airport information:

Country: Portugal

City: PORTO SANTO

Coordinates: N 33° 04.3', W 016° 21.0'

Elevation: 341

Customs: Customs

Fuel: Jet A1

RFF: CAT 6 (PPR CAT 8), CAT 4 0000-0800 LMT during this period higher cat 24HRS PNR
hours: H24

Runways:

Runway 18

Takeoff length: 3000, Landing length: 3000

Runway 36

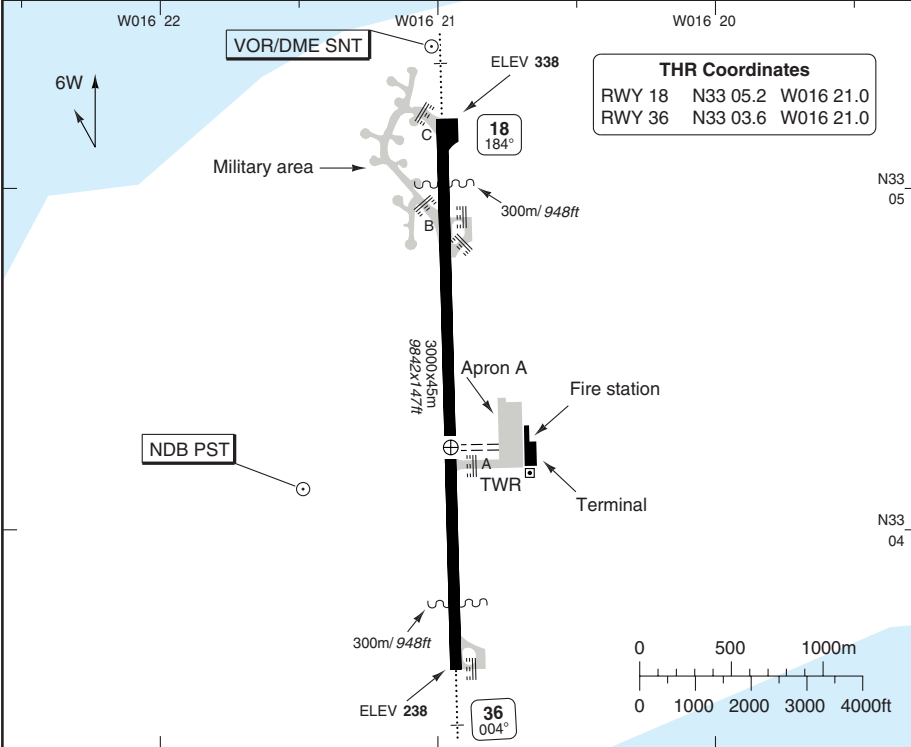
Takeoff length: 3000, Landing length: 3000

AERODROME

Porto Santo TWR
118.4
118.75

1 CAT 6: 08 - 24 LT. Higher CAT (up to CAT 8) Avbl 1hr PPR.
 CAT 4: 00 - 08 LT. Higher CAT Avbl 24hr PN.

AD Elev **338** ARP: N33 04.3 W016 21.0 RFF: **1** AD HR: H24



THR Coordinates			
RWY 18	N33 05.2	W016 21.0	
RWY 36	N33 03.6	W016 21.0	

RWY	Slope	TORA m/ft	LDA m/ft	ALS	REDL	Additional
18	-1.0	3000 / 9842	3000 / 9842	H-E 2	H	P 3° L/R (48)
36	+1.0	3000 / 9842	3000 / 9842	H-E 3	H	P 3° L/R (48)

2 420m. **3** 360m.

EU OPS		TAKE OFF MINIMA			
RWY	Facilities	RVR			
		A	B	C	D
18/36	RCL (day only) or RCL + REDL NIL (day only)	400 m			
		500 m			

© Navtech - lpps01laorg0

Change: New spec.

THIS CHART IS A PART OF NAVIGRAPH NDAC AND IS INTENDED FOR FLIGHT SIMULATION USE ONLY

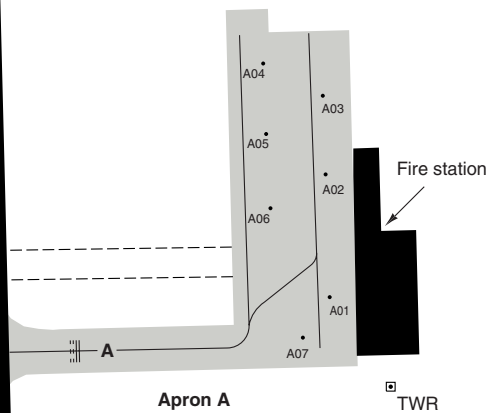
AERODROME Parking

PORTO SANTO

10 - 2

Porto Santo TWR
118.4
118.75

RWY 18/36



GENERAL INFORMATION

GENERAL

1. WARNING

High terrain on both sides of RWY.

2. SPEED

MAX 250kt below FL100.

3. NOISE ABATEMENT PROCEDURES - DEPARTURE

For aircraft in accordance with ICAO Annex 16, chapter 2: ICAO Standard Noise Abatement Procedure (Proc A) applies.
For aircraft in accordance with ICAO Annex 16, chapter 3 as well as B737-200: ICAO Standard Noise Abatement Procedures (Proc B) applies.

4. TWY RESTRICTIONS

TWY B and C width 15m/49ft.

5. PARKING

Stands A06 and A05 cannot be used simultaneously with stands A02 and A03.

ARRIVAL

1. COM FAIL

In the event of RCF squawk 7600, fly at/to last assigned level and:
- Above FL 140 proceed to XINGA HP and descend to FL140 in HP, then proceed to MAVEX or ADAGO HP (according to RWY in use) and proceed as below.
- At/below FL140 proceed to MAVEX or ADAGO HP (according to RWY in use) and at ETA, according to CPL or at EAT (when received and acknowledged) start descent to initial approach altitude to carry out a standard IFR approach according to IAC.

DEPARTURE

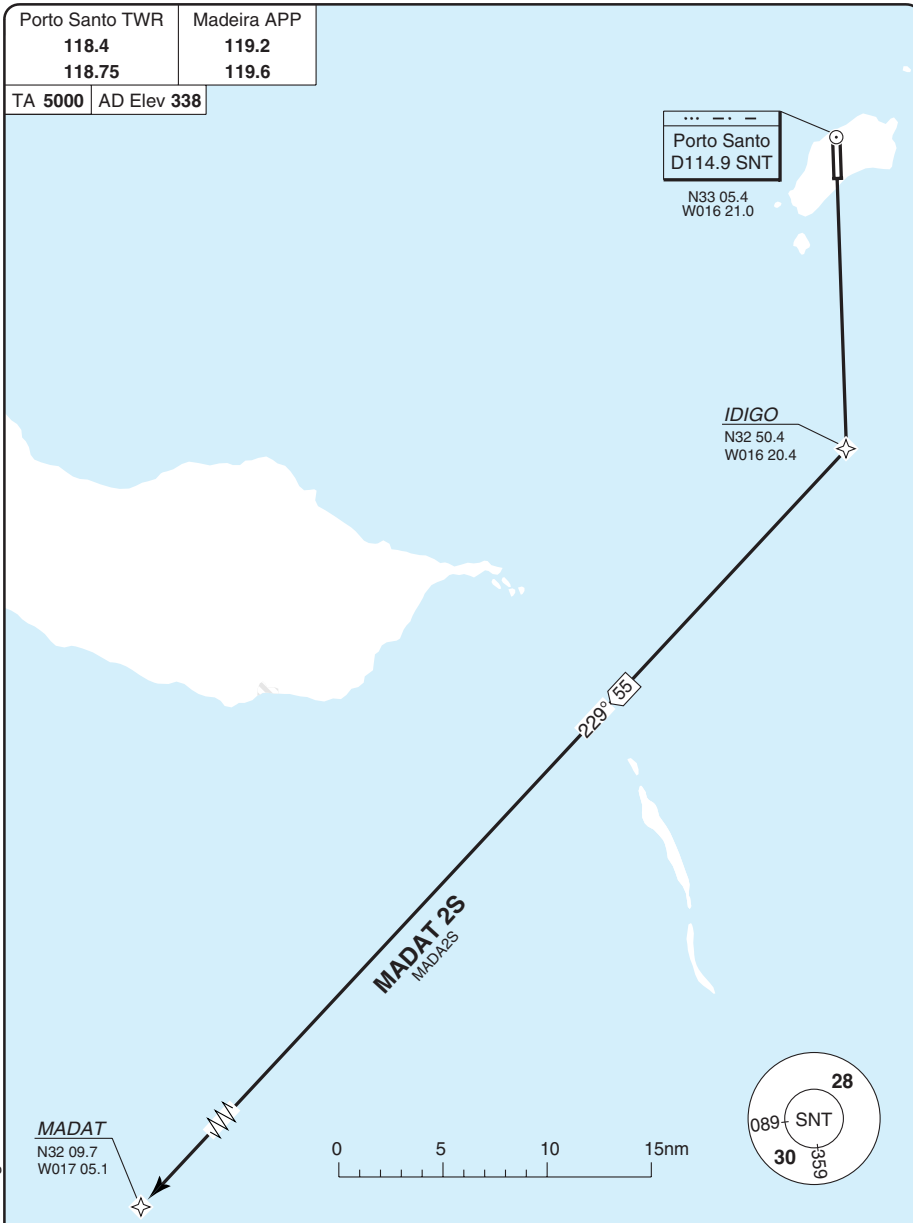
1. COM FAIL

In the event of RCF squawk 7600:
- Fly at/to the last assigned and acknowledged level, or to the level of the SID if higher, until passing D30 SNT. Thereafter adjust level and speed in accordance with filed flight plan.
- If being radar vectored or proceeding offset, when passing D30 SNT rejoin the current flight plan route and proceed as above.
- If cleared DCT to... fly at/to assigned and acknowledged level or FL60, whichever higher, until passing D30 SNT, then maintain the current flight plan route and proceed as above.

SID RWY 18 RNAV

Porto Santo TWR	Madeira APP
118.4	119.2
118.75	119.6

TA 5000 | AD Elev 338



30 - 1

© Navitech - lpps01daorg0

NOTE: If unable to comply with SID advise ATC.
WARNING: Be aware of high ground on both sides of Rwy.
COM FAIL: See 10-2.
COM: Contact Madeira APP 119.2 after TKOF.

SID	ALT Restriction	Routeing
MADAT 2S	Climb to FL60	Climb DCT to IDIGO - MADAT.

Change: New spec.

SID RWY 36 RNAV

Porto Santo TWR 118.4 118.75	Madeira APP 119.2 119.6
TA 5000	AD Elev 338

MNM **3000**

Porto Santo
 D114.9 SNT

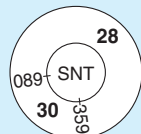
N33 05.4
 W016 21.0

IDIGO
 N32 50.4
 W016 20.4

229° 55'

MADAT 2N
 MADATN

MADAT
 N32 09.7
 W017 05.1



30 - 2

© Navitech - lpps02daorg0

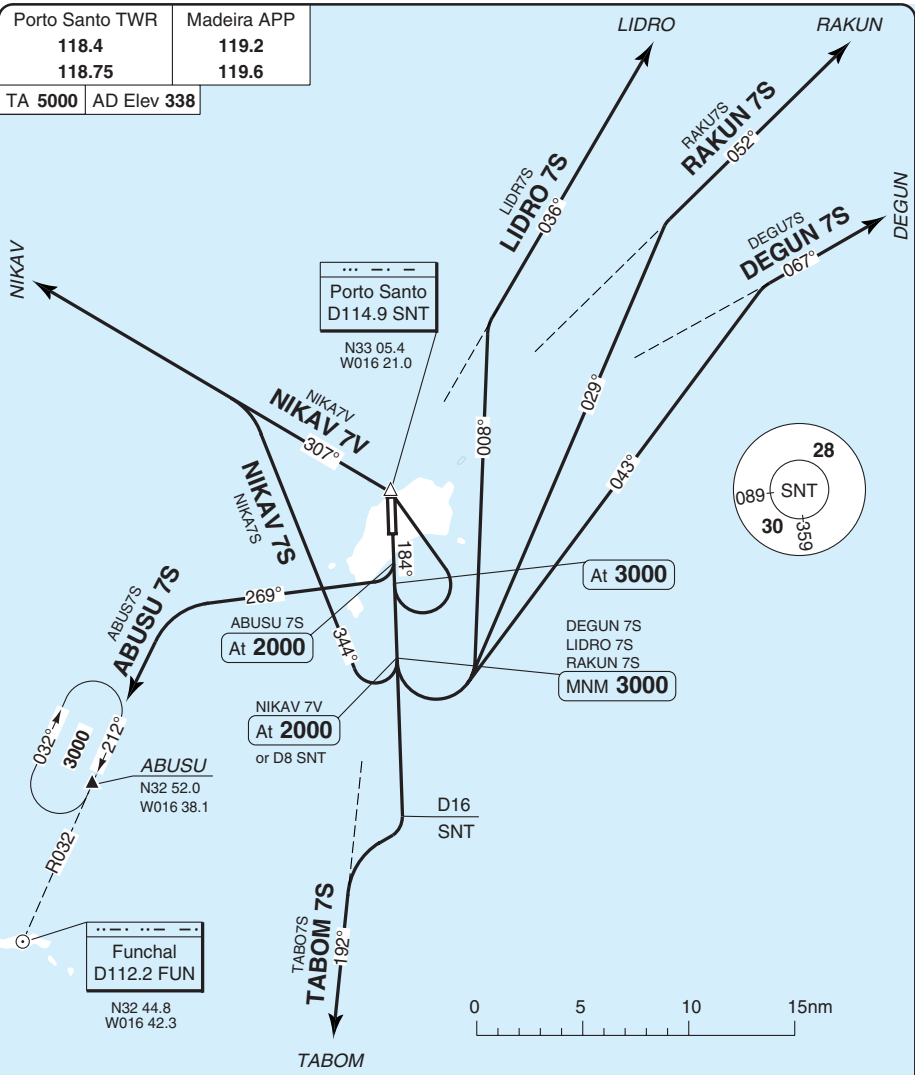
NOTE: If unable to comply with SID advise ATC.
WARNING: Be aware of high ground on both sides of Rwy.
COM FAIL: See 10-2.
COM: Contact Madeira APP 119.2 after TKOF.

SID	ALT Restriction	Routing
MADAT 2N	Climb to FL60	Climb on 004° - at MNM 3000 turn right - IDIGO - MADAT.

Change: New spec.

SID RWY 18

Porto Santo TWR	Madeira APP
118.4	119.2
118.75	119.6
TA 5000	AD Elev 338



30 - 3

WARNING: Be aware of high ground on both sides of Rwy.

COM FAIL: See 10-2.

COM: Contact Madeira APP 119.2 after TKOF.

ALT RESTRICTION: Climb to **FL60**.

SID	Routing
ABUSU 7S	Climb on 184° - at 2000 turn right - 269° - intcp 212°/R032 FUN - ABUSU HP.
DEGUN 7S	Climb on 184° - MNM 3000 - turn left - 043° - intcp R067 SNT - DEGUN.
LIDRO 7S	Climb on 184° - MNM 3000 - turn left - 008° - intcp R036 SNT - LIDRO.
NIKAV 7S	Climb on 184° - at D8 SNT or at 2000 turn right - 344° - intcp R307 SNT - NIKAV.
NIKAV 7V	Climb on 184° - at 3000 turn left - SNT - intcp R307 SNT - NIKAV.
RAKUN 7S	Climb on 184° - MNM 3000 - turn left - 029° - intcp R052 SNT - RAKUN.
TABOM 7S	Climb on 184° - at D16 SNT turn right - intcp R192 SNT - TABOM.

© Navitech - lpps03daorg0

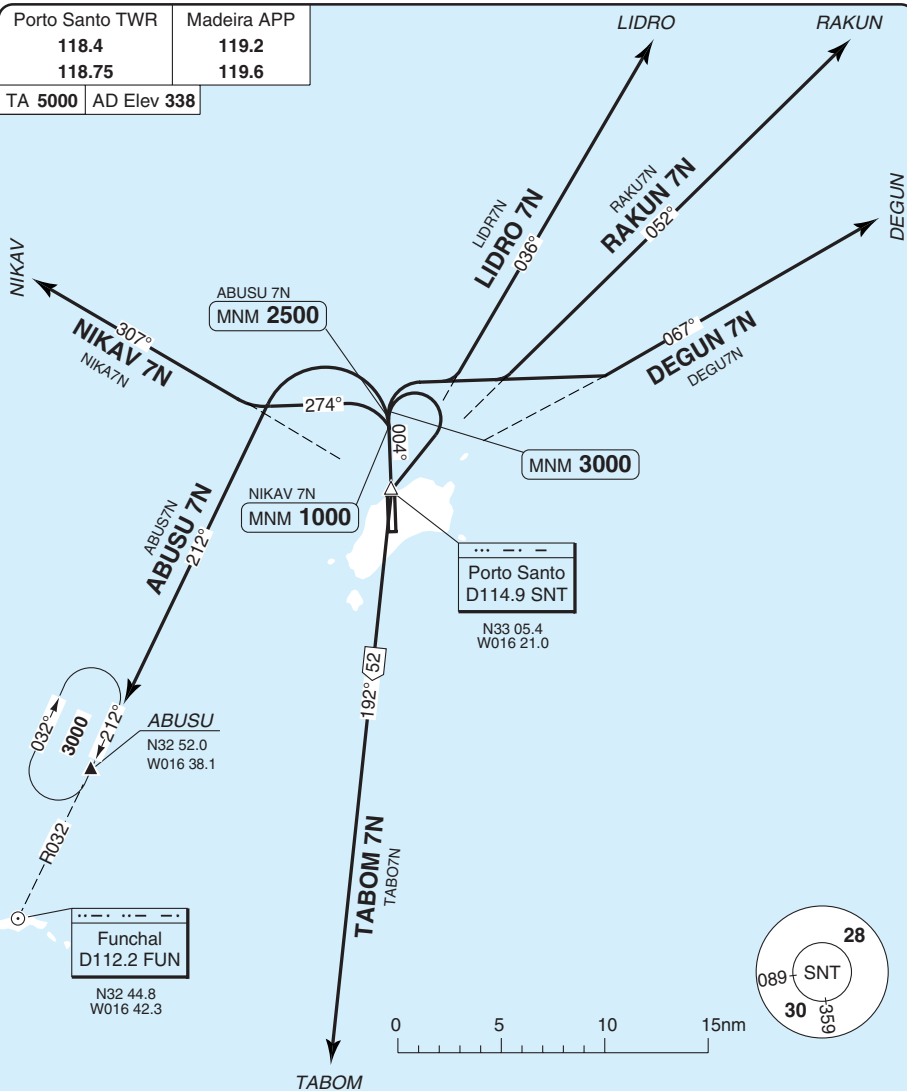
Change: New spec.

THIS CHART IS A PART OF NAVIGRAPH NDAC AND IS INTENDED FOR FLIGHT SIMULATION USE ONLY

SID RWY 36

Porto Santo TWR	Madeira APP
118.4	119.2
118.75	119.6
TA 5000	AD Elev 338

30 - 4



WARNING: Be aware of high ground on both sides of Rwy.

COM FAIL: See 10-2.

COM: Contact Madeira APP 119.2 after TKOF.

ALT RESTRICTION: Climb to **FL60**.

SID	Routing
ABUSU 7N	Climb on 004° - MNM 2500 - turn left - intcp R032 FUN - ABUSU HP.
DEGUN 7N	Climb on 004° - MNM 3000 - turn right - intcp R067 SNT - DEGUN.
LIDRO 7N	Climb on 004° - MNM 3000 - turn right - intcp R036 SNT - LIDRO.
NIKAV 7N	Climb on 004° - SNT - at MNM 1000 turn left - 274° - intcp R307 SNT - NIKAV.
RAKUN 7N	Climb on 004° - MNM 3000 - turn right - intcp R052 SNT - RAKUN.
TABOM 7N	Climb on 004° - MNM 3000 - turn right - SNT - intcp R192 SNT - TABOM.

© Navitech - lpps04daorg0

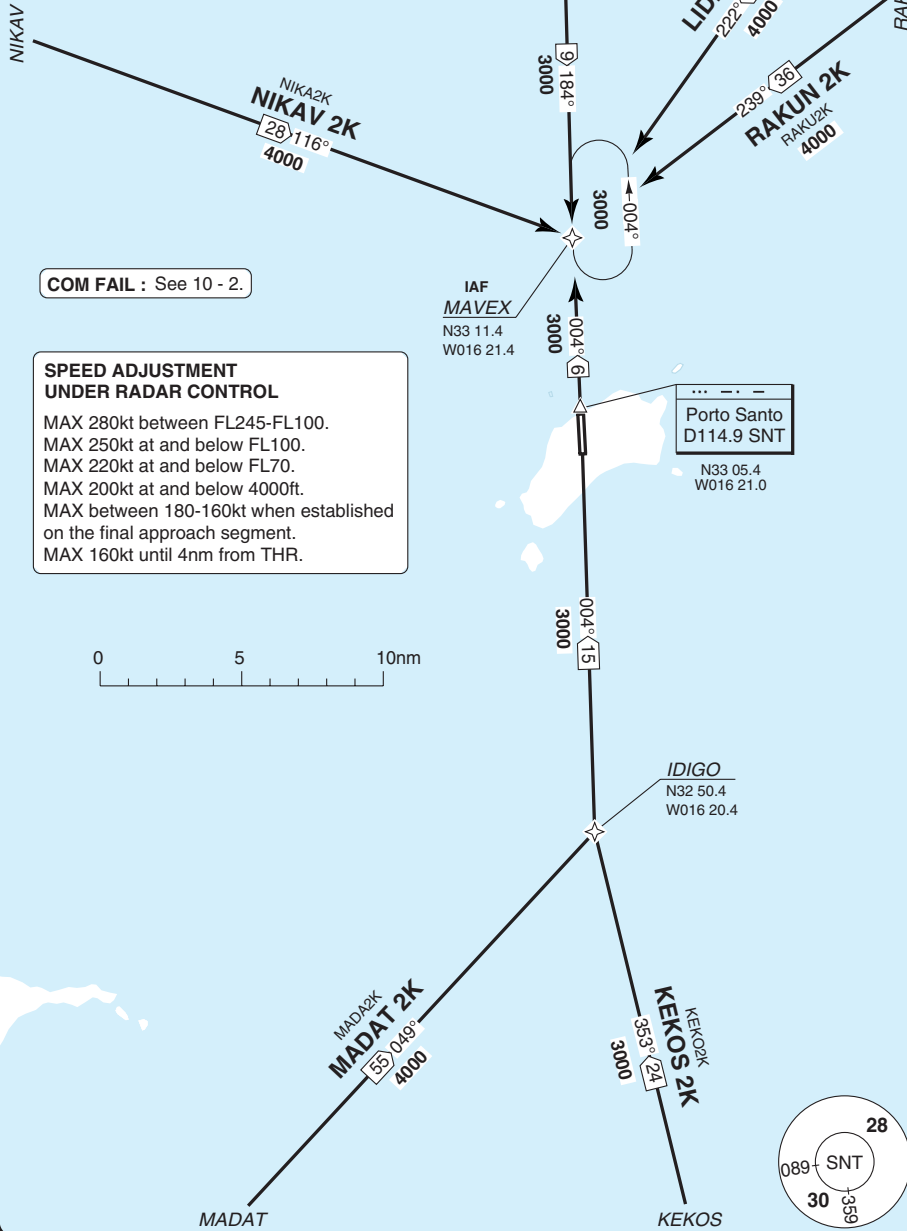
Change: New spec.

THIS CHART IS A PART OF NAVIGRAPH NDAC AND IS INTENDED FOR FLIGHT SIMULATION USE ONLY

STAR RWY 18 **RNAV**

PORTO SANTO

Madeira APP	Porto Santo TWR
119.2	118.4
119.6	118.75
TL ATC	AD Elev 338



40 - 1

© Navitech - lpps01aaorg0

Change: New spec.

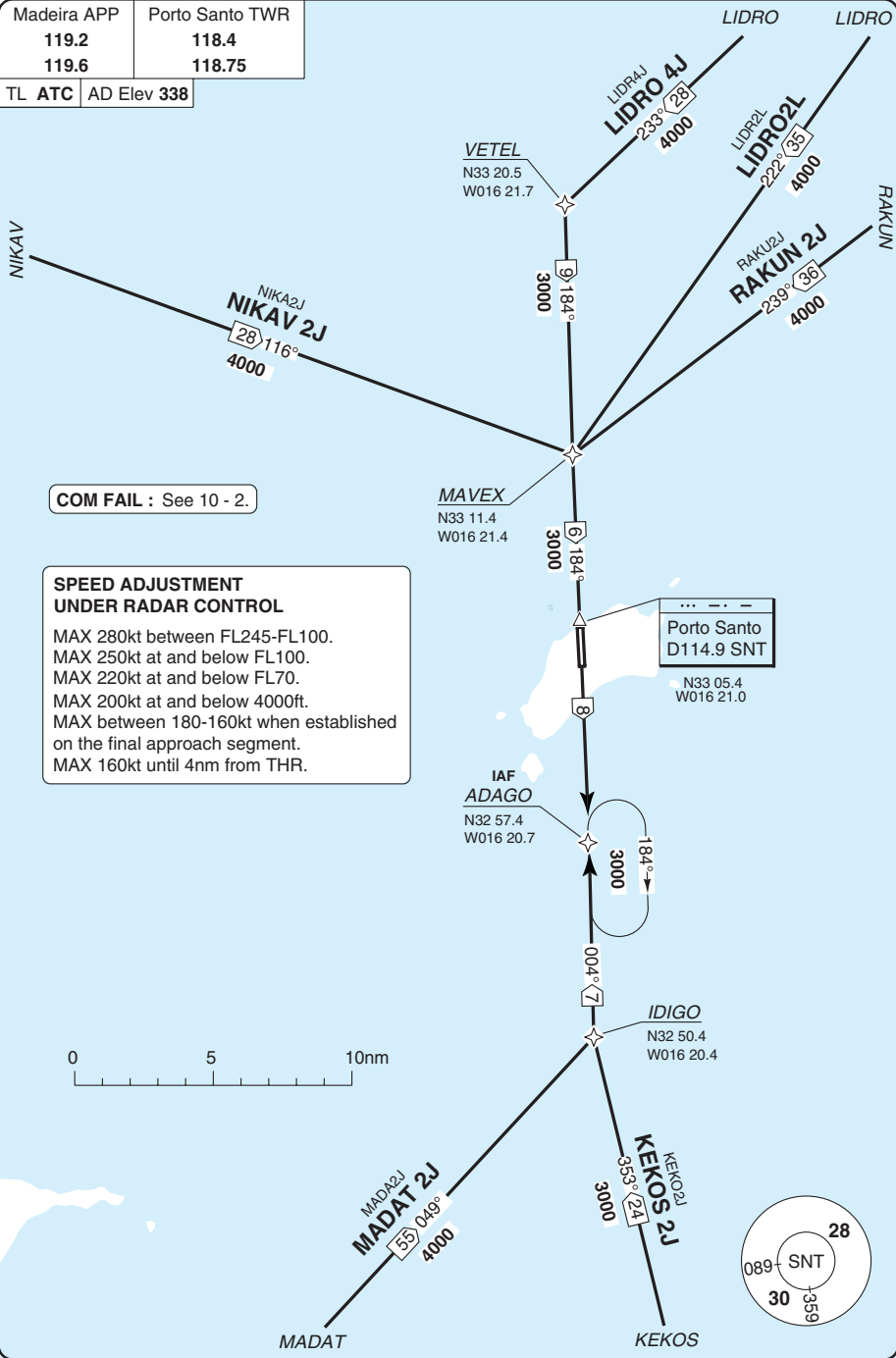
THIS CHART IS A PART OF NAVIGRAPH NDAC AND IS INTENDED FOR FLIGHT SIMULATION USE ONLY

STAR RWY 36 **RNAV**

PORTO SANTO

Madeira APP	Porto Santo TWR
119.2	118.4
119.6	118.75

TL ATC AD Elev 338



COM FAIL : See 10 - 2.

SPEED ADJUSTMENT UNDER RADAR CONTROL

MAX 280kt between FL245-FL100.
 MAX 250kt at and below FL100.
 MAX 220kt at and below FL70.
 MAX 200kt at and below 4000ft.
 MAX between 180-160kt when established on the final approach segment.
 MAX 160kt until 4nm from THR.

40 - 2

© Navitech - lppso2aaorg0g

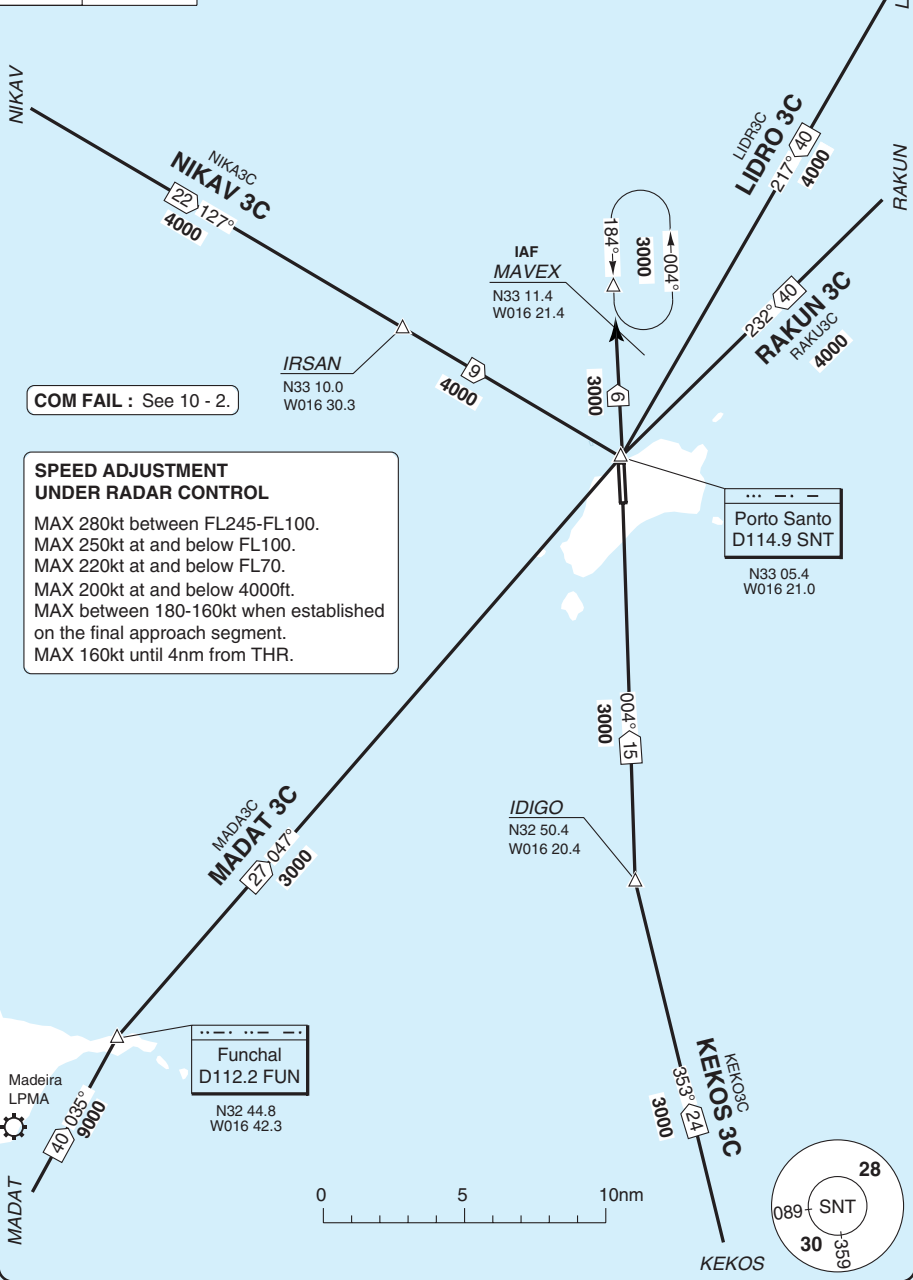
Change: New spec.

THIS CHART IS A PART OF NAVIGRAPH NDAC AND IS INTENDED FOR FLIGHT SIMULATION USE ONLY

STAR RWY 18

Madeira APP	Porto Santo TWR
119.2	118.4
119.6	118.75

TL ATC AD Elev **338**



COM FAIL : See 10 - 2.

SPEED ADJUSTMENT UNDER RADAR CONTROL

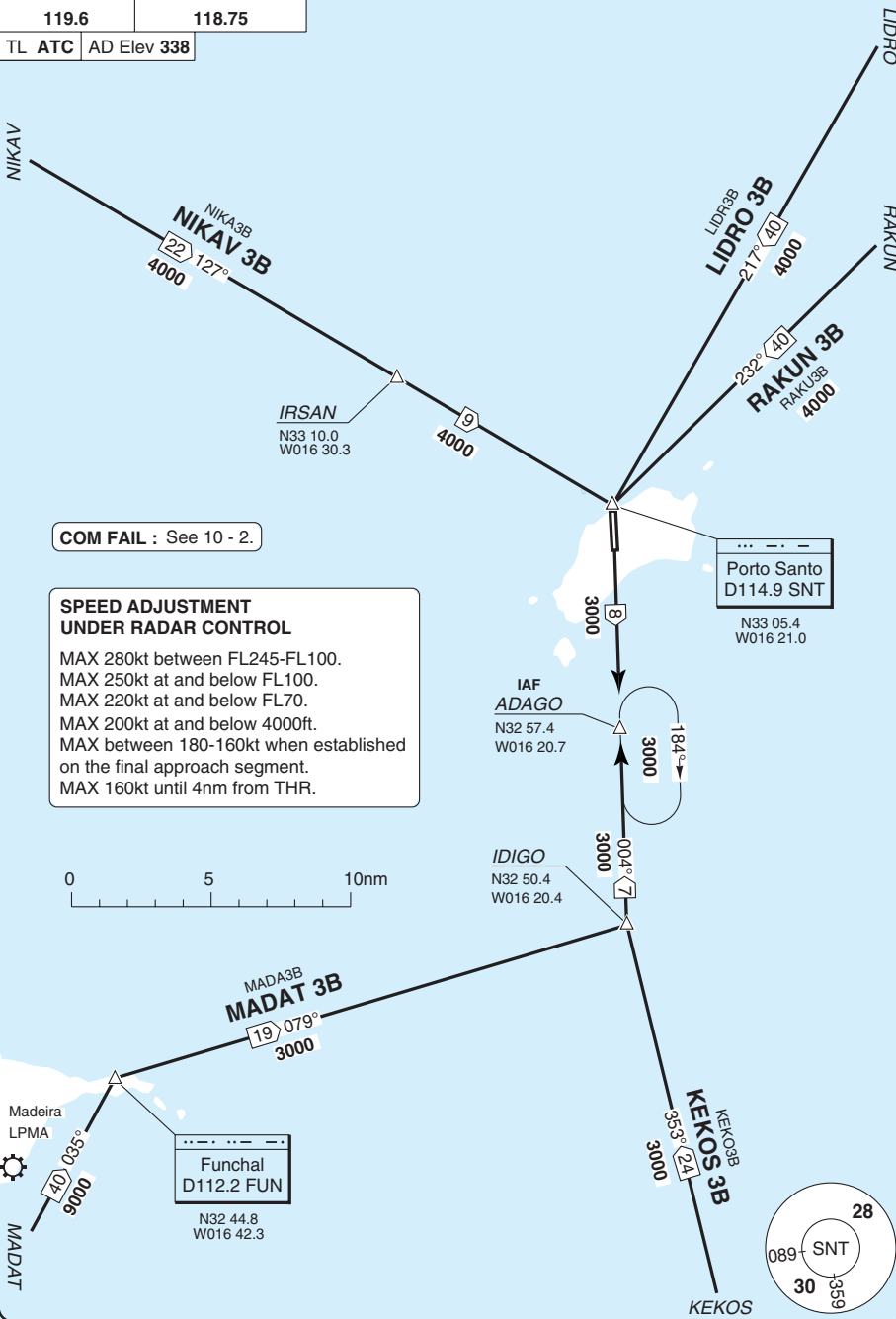
MAX 280kt between FL245-FL100.
 MAX 250kt at and below FL100.
 MAX 220kt at and below FL70.
 MAX 200kt at and below 4000ft.
 MAX between 180-160kt when established on the final approach segment.
 MAX 160kt until 4nm from THR.

Change: New spec.

THIS CHART IS A PART OF NAVIGRAPH NDAC AND IS INTENDED FOR FLIGHT SIMULATION USE ONLY

STAR RWY 36

Madeira APP	Porto Santo TWR
119.2	118.4
119.6	118.75
TL ATC	AD Elev 338



COM FAIL : See 10 - 2.

SPEED ADJUSTMENT UNDER RADAR CONTROL

MAX 280kt between FL245-FL100.
 MAX 250kt at and below FL100.
 MAX 220kt at and below FL70.
 MAX 200kt at and below 4000ft.
 MAX between 180-160kt when established on the final approach segment.
 MAX 160kt until 4nm from THR.

40 - 4

© Navitech - lpps04aaorg00

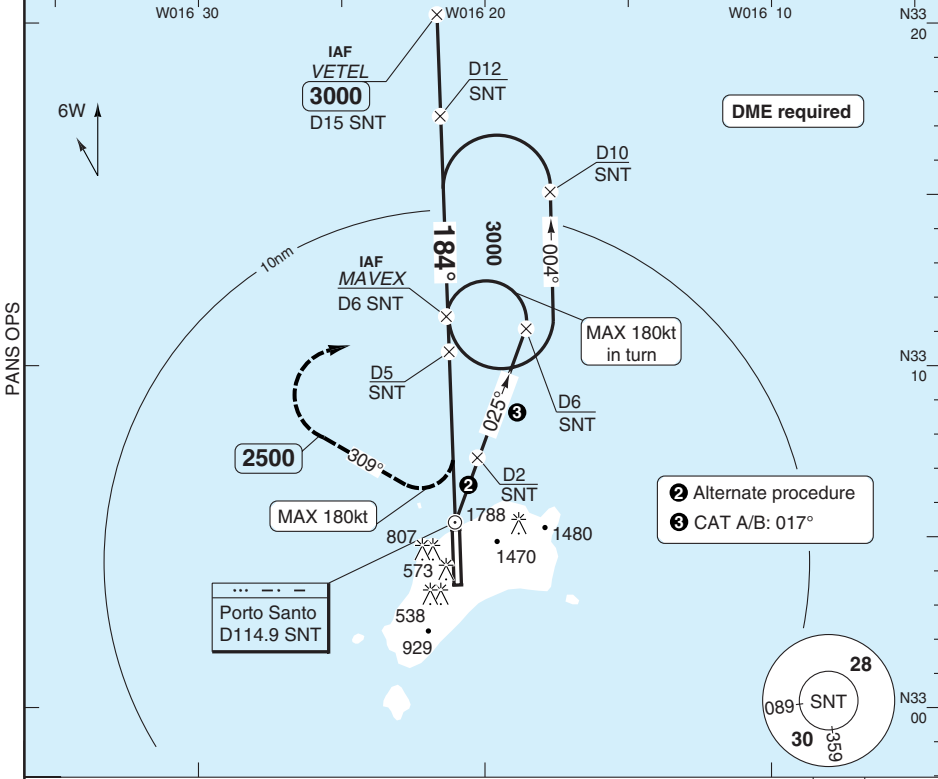
Change: New spec.

THIS CHART IS A PART OF NAVIGRAPH NDAC AND IS INTENDED FOR FLIGHT SIMULATION USE ONLY

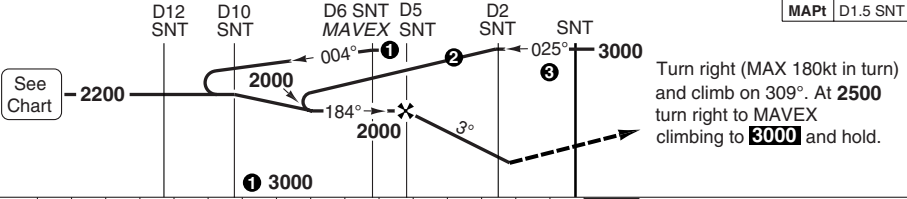
VOR RWY 18

Madeira APP 119.2 119.6	Porto Santo TWR 118.4 118.75
---	--

VOR/DME 114.9 SNT	FAT 184°	THR Elev 338	AD Elev 338	TL ATC	TA 5000
--------------------------	-----------------	---------------------	--------------------	---------------	----------------



50 - 1



nm	16	15	14	13	12	11	10	9	8	7	6	5	4	3	2	1	0
----	----	----	----	----	----	----	----	---	---	---	---	---	---	---	---	---	---

ACFT	VOR+DME	Circling a
A	860 (530) 1500m	1230 (889) 1.5km
B		1230 (889) 1.6km
C	890 (560) 2100m	1330 (989) 2.4km
D		1330 (989) 3.6km

a West of RWY 18/36.

DME SNT	3° ALT
4	1700
3	1370
2	1060

LDA 3000x45
 9842x147ft
 P 3° (48)



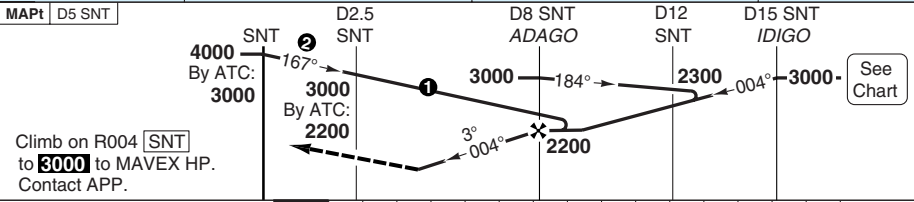
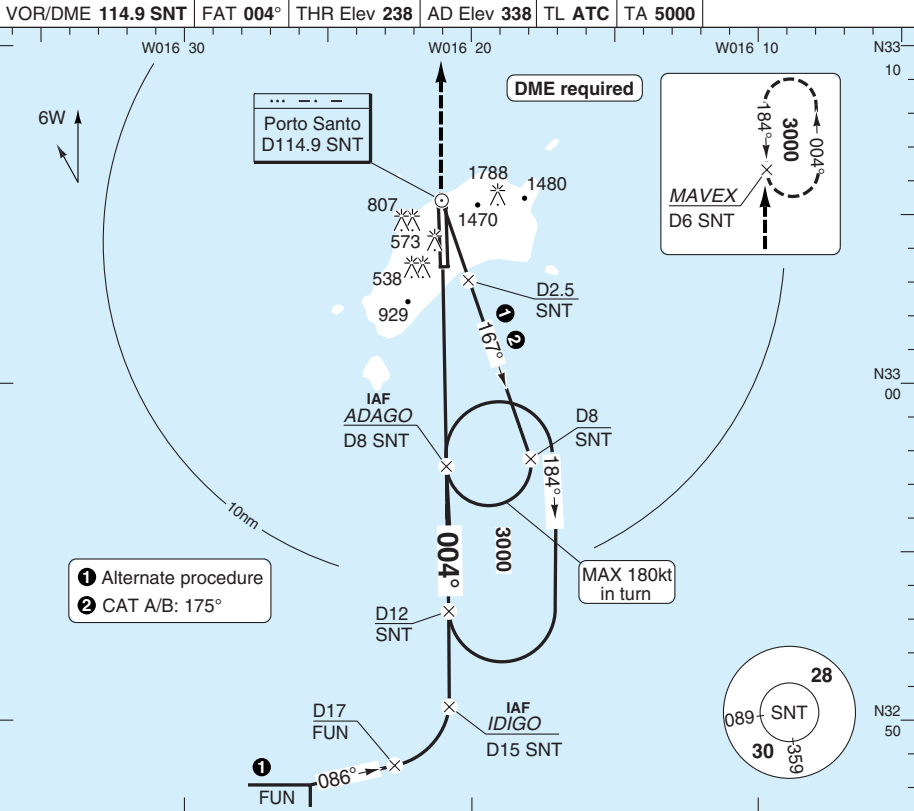
GS	80	100	120	140	160
ROD 3°	420	530	630	740	840

Change: New spec.

© Navtech - lpps01aiap00

VOR RWY 36

Madeira APP 119.2 119.6	Porto Santo TWR 118.4 118.75					
VOR/DME 114.9 SNT	FAT 004°	THR Elev 238	AD Elev 338	TL ATC	TA 5000	



ACFT	VOR+DME	Circling a	a West of RWY 18/36.					DME NST	3° ALT	LDA 3000x45 9842x147ft P 3° (48)
A	1040 (810) 1500m	1230 (889) 1.5km	0	1	2	3	4	7	1890	
B		1230 (889) 1.6km	5	6	7	8	9	1570		
C	1080 (850) 2400m	1330 (989) 2.4km	10	11	12	13	14			
D		1330 (989) 3.6km	15	16	17	18	19			
GS	80	100	120	140	160					
ROD 3°	420	530	630	740	840					

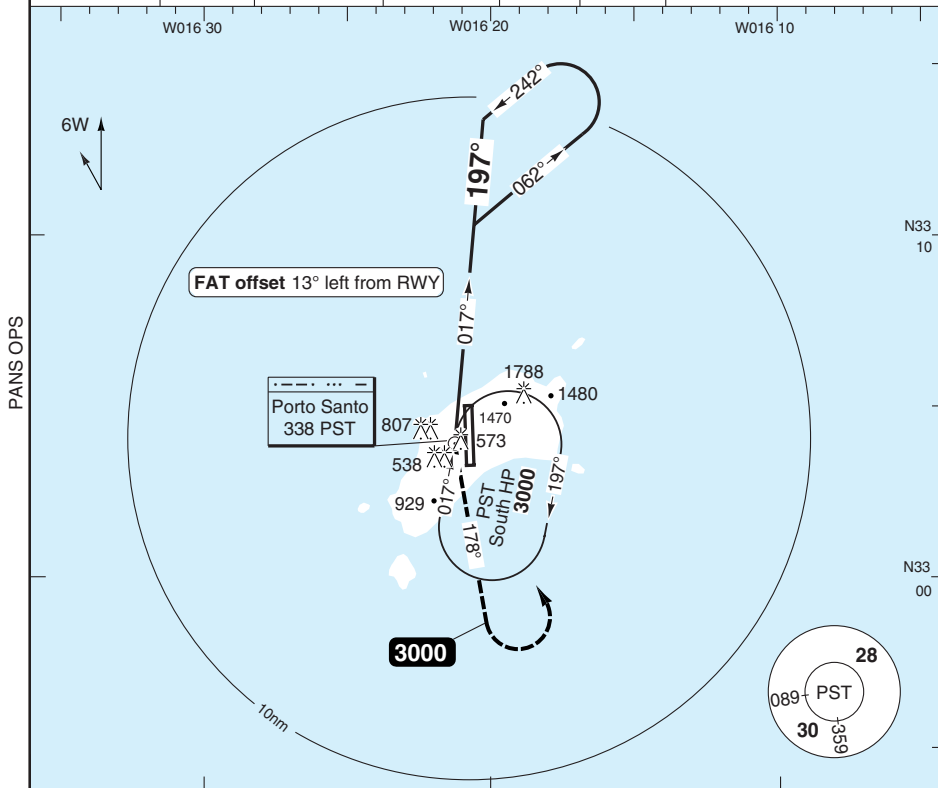
Change: New spec.

THIS CHART IS A PART OF NAVIGRAPH NDAC AND IS INTENDED FOR FLIGHT SIMULATION USE ONLY

NDB RWY 18

Madeira APP 119.2 119.6	Porto Santo TWR 118.4 118.75
---	--

NDB 338 PST	FAT 197°	THR Elev 338	AD Elev 338	TL ATC	TA 5000
--------------------	-----------------	---------------------	--------------------	---------------	----------------

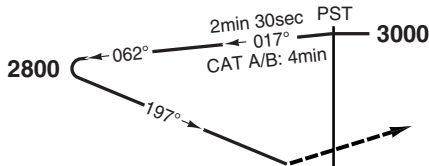


PANS OPS

N33 10
N33 00

50 - 3

MAPt PST



Turn left on 178°, climbing to **3000**, turn left to **PST** south holding. Contact APP.

nm 12 11 10 9 8 7 6 5 4 3 2 1 0
 ACFT **NDB** **Circling** **a** **a** West of RWY 18/36.

ACFT	NDB	Circling a
A		
B	1600 (1270)	1600 (1270)
C	5000m	5.0km
D		

LDA 3000x45
 9842x147ft
 P 3° (48)

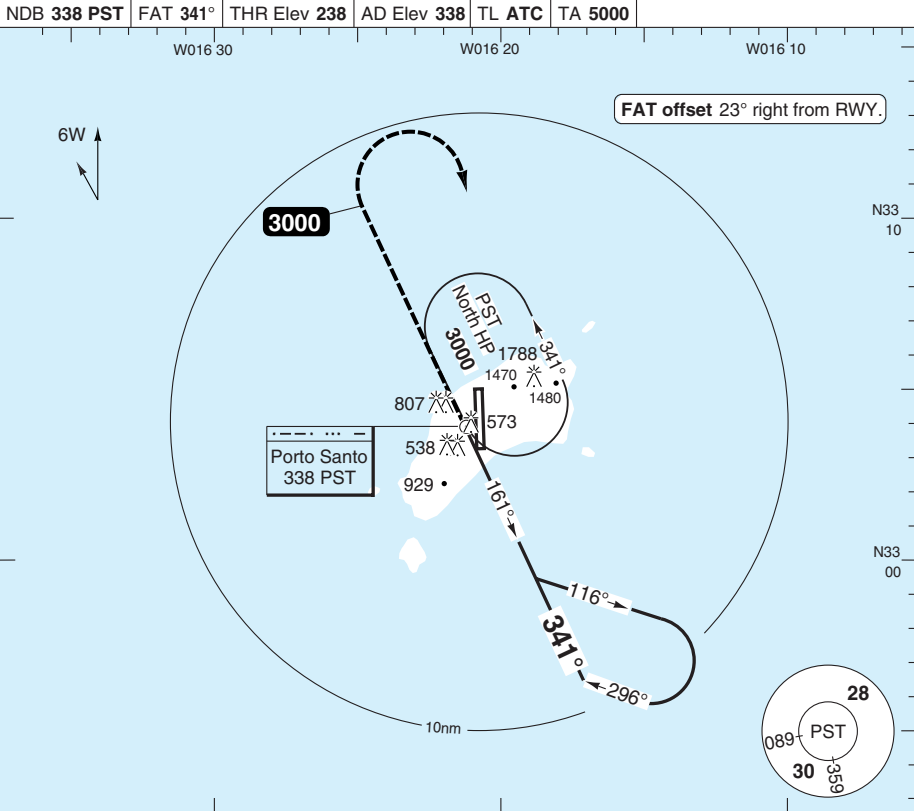


IALS

420

NDB RWY 36

Madeira APP 119.2 119.6	Porto Santo TWR 118.4 118.75				
NDB 338 PST	FAT 341°	THR Elev 238	AD Elev 338	TL ATC	TA 5000

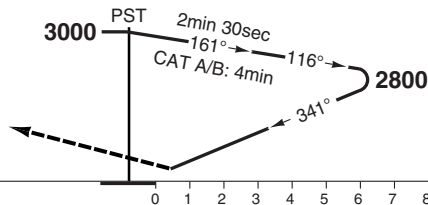


PANS OPS

50 - 4

MAPt PST

Climb on 341° to **3000**,
 turn right to **PST** North HP,
 contact APP.



ACFT	NDB	NDB a	Circling a	Circling a b
A	1050 (820) 3600m	1050 (820) 3800m	1230 (889) 3.6km	1230 (889) 3.8km
B		1050 (820) 4000m	1330 (989) 3.6km	1330 (989) 4.0km
C				
D				

a Non CDFA
b West of RWY 18/36.

LDA 3000x45
 9842x147ft
 P 3° (48)



360

BALS

© Navtech - lpps04iaip00
 EU OPS

Change: New spec.

THIS CHART IS A PART OF NAVIGRAPH NDAC AND IS INTENDED FOR FLIGHT SIMULATION USE ONLY

JAR-OPS Landing Minima

The following Minima is for Public Transport aircraft and conforms to JAR-OPS1 regulations.

STRAIGHT-IN APPROACH		C				D			
R/W	Procedure	DA/ MDA QNH ft	DH/ MDH QFE ft	RVR m	RVR No ALS m	DA/ MDA QNH ft	DH/ MDH QFE ft	RVR m	RVR No ALS m
18	VOR/DME	900	560	1600	2000	900	560	1800	2000
18	NDB	1610	1270	1800	2000	1610	1270	2000	2000
36	VOR/DME	1090	850	2000	2000	1090	850	2000	2000
36	NDB	1060	820	2000	2000	1060	820	2000	2000

Notes:

CIRCLING		C			D		
R/W	Procedure	MDA QNH ft	MDH QFE ft	Vis m	MDA QNH ft	MDH QFE ft	Vis m
18	NDB (1)	1600	1270	2400	1600	1270	3600
18/36	All other procs (1)	1330	1000	2400	1330	1000	3600

Notes:

(1) West of RWY only.

TAKE-OFF		C		D	
Runway	Facilities	RVR	Vis	RVR	Vis
18/36	REDL and/or RCL	400	-	400	-
18/36	Nil (Day only)	500	-	500	-

Notes:

JAR-OPS Landing Minima

PORTO SANTO

The following Minima is for Public Transport aircraft and conforms to JAR-OPS1 regulations.

STRAIGHT-IN APPROACH		A				B			
R/W	Procedure	DA/ MDA QNH ft	DH/ MDH QFE ft	RVR m	RVR No ALS m	DA/ MDA QNH ft	DH/ MDH QFE ft	RVR m	RVR No ALS m
18	VOR/DME	870	530	1400	1500	870	530	1500	1500
18	NDB	1610	1270	1500	1500	1610	1270	1500	1500
36	VOR/DME	1050	810	1500	1500	1050	810	1500	1500
36	NDB	1060	820	1500	1500	1060	820	1500	1500

Notes:

CIRCLING		A			B		
R/W	Procedure	MDA QNH ft	MDH QFE ft	Vis m	MDA QNH ft	MDH QFE ft	Vis m
18	NDB (1)	1600	1270	1500	1600	1270	1600
18/36	All other procs (1)	1230	900	1500	1230	900	1600

Notes:

(1) West of RWY only.

TAKE-OFF		A		B	
Runway	Facilities	RVR	Vis	RVR	Vis
18/36	REDL and/or RCL	400	-	400	-
18/36	Nil (Day only)	500	-	500	-

Notes: