

Airport information:

Country: Portugal

City: PORTO

Coordinates: N 41° 14.1', W 008° 40.7'

Elevation: 227

Customs: Customs

Fuel: 100LL, Jet A1

RFF: CAT 8

hours: H24

Runways:

Runway 17

Takeoff length: 3480, Landing length: 3180

Runway 35

Takeoff length: 3480, Landing length: 3330

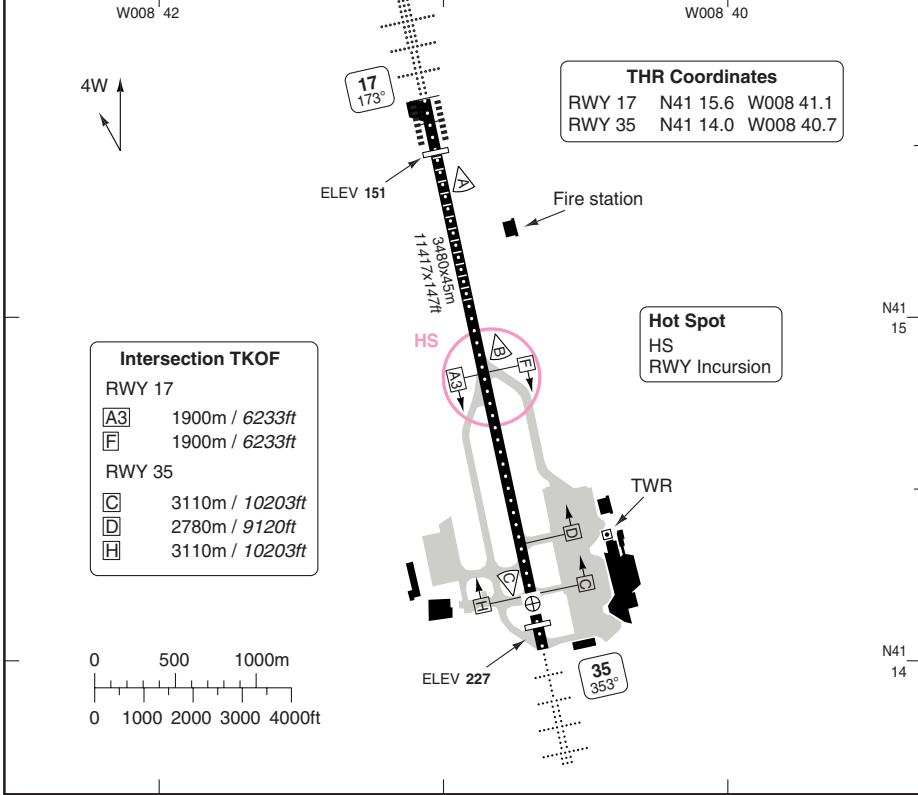
AERODROME

Francisco Sa Carneiro PORTO

10 - 1

Porto DLV 118.925 118.85	TWR 118.0 118.85	ATIS (D) 124.3	
--	--------------------------------------	--------------------------	--

AD Elev 227	ARP: N41 14.1 W008 40.7	RFF: CAT 8	AD HR: H24
--------------------	-------------------------	------------	------------



RWY	Slope	TORA m/ft	LDA m/ft	ALS	REDL	RCLL	Additional
17	+0.7	3480 / 11417	3180 / 10433	H-A	H	15m	P 2.7° (65)
35	-0.7	3480 / 11417	3330 / 10925	H-C	H	15m	P 3° (48)

EU OPS TAKE OFF MINIMA

RWY	Facilities	RVR			
		A	B	C	D
17/35	HRCLL + HREDL + Multiple RVR	Ap.O	LVTO	125m	150m
	RCLL + REDL + Multiple RVR		LVTO	150m	200m
	RCLL + REDL		LVTO	200m	250m
	RCL (day only) or RCL + REDL		LVTO	250m	300m
	RCL (day only) or RCL + REDL			400m	400m
	NIL (day only)			500m	500m

© Navtech - lppr01laorg0

Change: New TWY and APN.

THIS CHART IS A PART OF NAVIGRAPH NDAC AND IS INTENDED FOR FLIGHT SIMULATION USE ONLY

GENERAL INFORMATION

10 - 2

1. NAV RESTRICTION

VOR/DME 114.10 PRT unusable:
 340°-360° beyond 35nm.
 NDB 327 POR unusable:
 100°-130° beyond 40nm below 9000ft
 NDB 367 PG unusable:
 030°-150° beyond 20nm below 7000ft

2. TWY RESTRICTION

- 2.1 Follow-me and Marshaller compulsory during:
 - Push-back during CATII OPS
 - Taxi on TWY A3 and APN:s, ACFT
 with wingspan more than 65m/213ft.
 - Parking.
- 2.2 LDG RWY 17: Do not vacate RWY via TWY F or A3.

3. WARNING

Watch out for birds.
 Gas cannon units installed along RWY 17/35
 and permanently activated.

4. USE OF APU

Usage limited to 5min (wide-body: 10min)
 after block, and 10min (wide-body: 20min)
 before ETD.

5. NOISE ABATEMENT PROCEDURE

LDG and/or TKOF is prohibited 00 - 06 LT.
 Except in cases of force majeure.
 ACFT authorised for LDG or TKOF shall comply
 with ICAO Annex 16 Volume 1 Chapter 3 and
 Portuguese AIP.
 ACFT are forbidden to reverse thrust after LDG.
 Penalties for non-compliance with slot allocation
 rules during the night period.

6. SPEED

MAX 280kt between FL245-FL100.
 MAX 250kt at or below FL100.
 MAX 220kt at or below FL70.
 MAX 200kt at or below 4000ft.
 MAX between 180kt and 160kt when
 established on FNA and thereafter 160kt
 until 4nm from THR.

7. PARKING

Stands S10-S12, S30-S37, S50-S51 and
 S53-S55 provided with APIS.

8. START UP

Contact TWR 10min before Start-up and
 state: C/S, stand, cruising level and ATIS.
 ENG start-up is only permitted after push-back.
 Use of reverse thrust for manoeuvring
 to and from a stand is not permitted.

9. STANDARD TAXI ROUTES

9.1 Arrivals

Stands	RWY 17	RWY 35
S8-12	B, S1	F, S6, S4, S2, S1
S20-25	B, S2	F, S6, S4, S2
S30-38	B, S3	F, S6, S4, S3
S40-43	C, S4	F, S6, S4
S50-57	C, S4, S5	F, S5
S60-66	C, S4, S6	F, S6
S70-73	C, S4, S5	F, S5
W	H	A3, A2,
T1-4	J, Y	A3, Y

9.2 Departures

Stands	RWY 17	RWY 35
S8-12	S2, S4, S6, F	B
S20-25	S4, S6, F	B
S30-38	S4, S6, F	S2, B
S40-43	S6, F	S2, B
S50-57	F	S4, S2, B
S60-66	F	S4, S2, B
S70-73	F	S4, S2, B
W	A2, A3	A1
T1-4	Y, A3	Y, A2, A1

GROUND Parking

Francisco Sa Carneiro PORTO

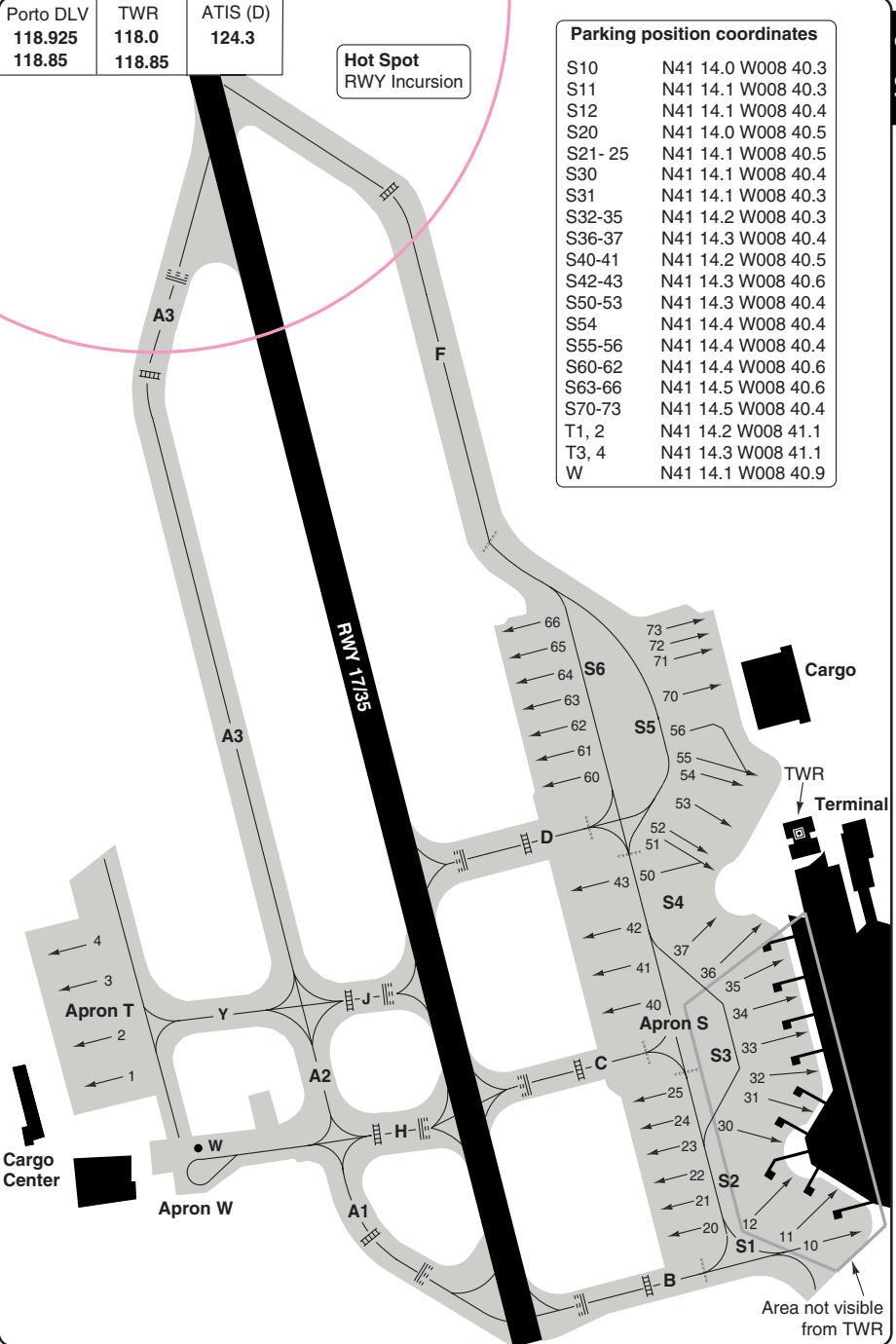
10 - 3

Porto DLV	TWR	ATIS (D)
118.925	118.0	124.3
118.85	118.85	

Hot Spot
RWY Inursion

Parking position coordinates

S10	N41 14.0 W008 40.3
S11	N41 14.1 W008 40.3
S12	N41 14.1 W008 40.4
S20	N41 14.0 W008 40.5
S21- 25	N41 14.1 W008 40.5
S30	N41 14.1 W008 40.4
S31	N41 14.1 W008 40.3
S32-35	N41 14.2 W008 40.3
S36-37	N41 14.3 W008 40.4
S40-41	N41 14.2 W008 40.5
S42-43	N41 14.3 W008 40.6
S50-53	N41 14.3 W008 40.4
S54	N41 14.4 W008 40.4
S55-56	N41 14.4 W008 40.4
S60-62	N41 14.4 W008 40.6
S63-66	N41 14.5 W008 40.6
S70-73	N41 14.5 W008 40.4
T1, 2	N41 14.2 W008 41.1
T3, 4	N41 14.3 W008 41.1
W	N41 14.1 W008 40.9



© Navitech - lppr03gaorg0

Reverse side blank

Change: New APN T and TWY Y.

THIS CHART IS A PART OF NAVIGRAPH NDAC AND IS INTENDED FOR FLIGHT SIMULATION USE ONLY

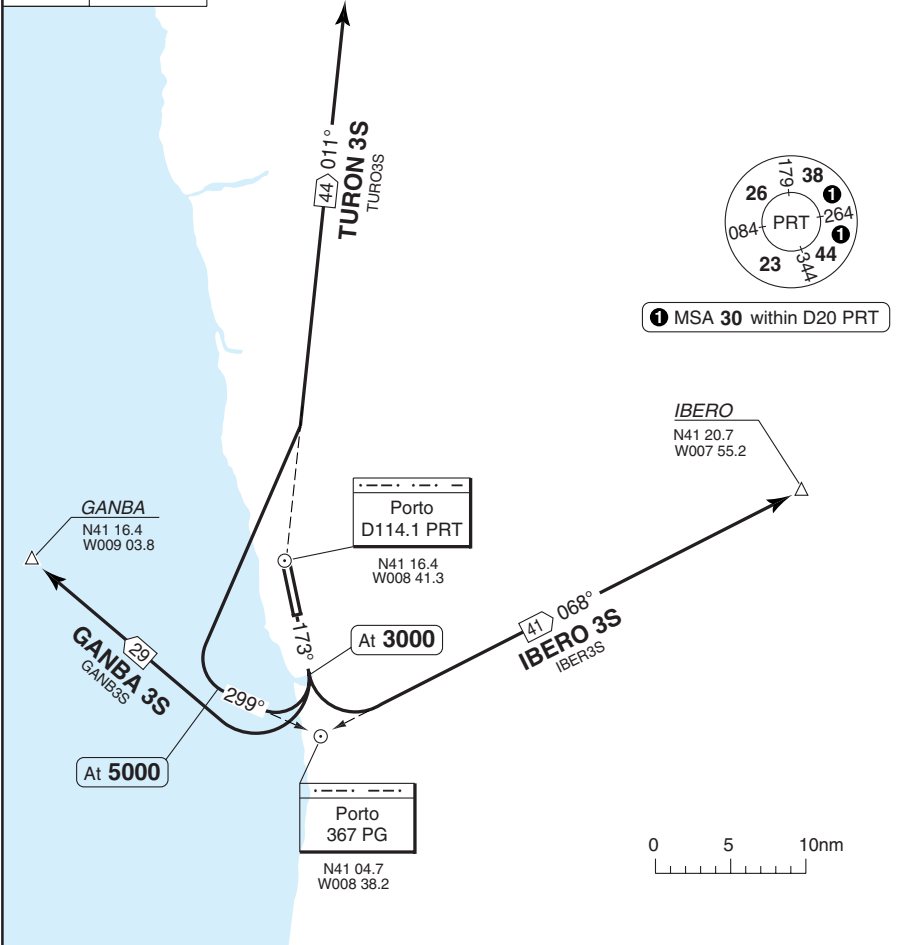
SID RWY 17 North, East, West

Francisco Sa Carneiro PORTO

Porto DLV	TWR	APP	ATIS (D)
118.925	118.0	121.1	124.3
118.85	118.85	118.85	

TA 4000 | AD Elev 227

TURON



COM: After TKOF contact Porto APP 121.1.

ALT RESTRICTION: Climb to **FL70**

SID	Routeing
(INITIAL CLIMB)	Climb on 173° to 3000 follow SID.
GANBA 3S	Turn right - GANBA
IBERO 3S	Turn left - intcp 068° PG - IBERO
TURON 3S	Turn right - 299° from PG - at 5000 turn right - intcp R011 PRT - TURON

Change: Comms.

WEF 18 NOV 10

30 - 2 | 20 OCT 10

Portugal - LPPR / OPO

SID RWY 17 East, South, West

Francisco Sa Carneiro PORTO

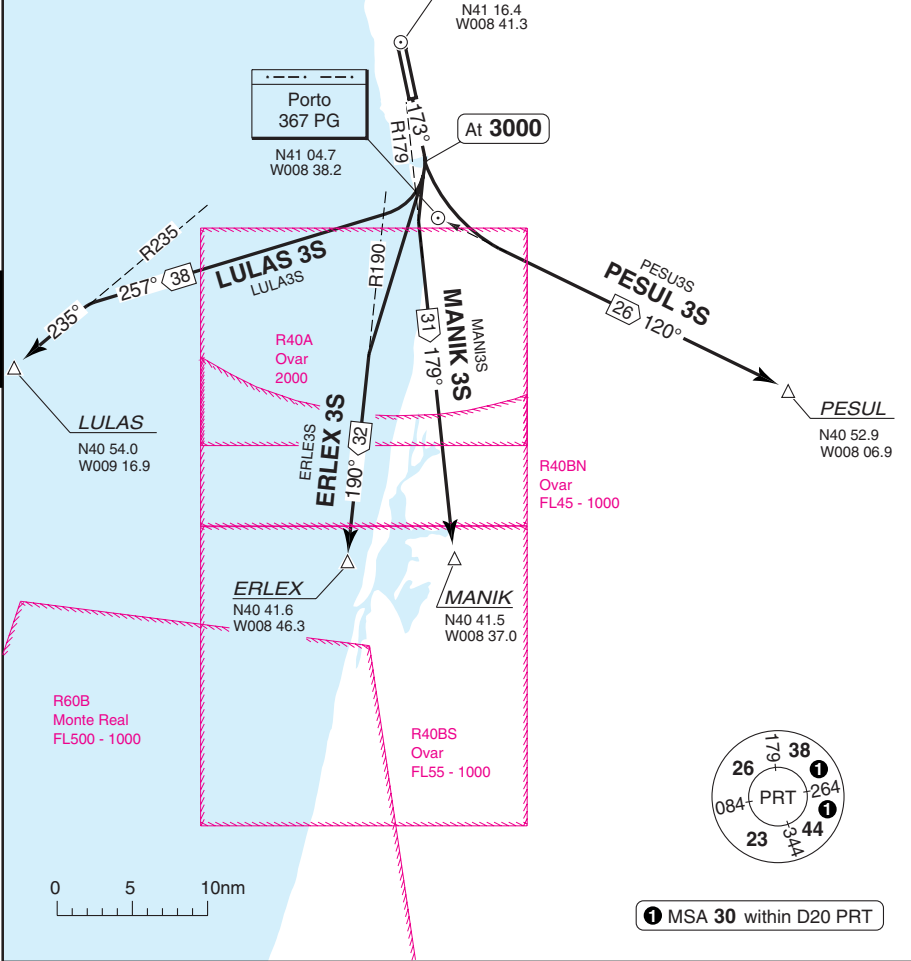
Porto DLV	TWR	APP	ATIS (D)
118.925	118.0	121.1	124.3
118.85	118.85	118.85	

TA 4000 AD Elev 227

Porto
D114.1 PRT
N41 16.4
W008 41.3

Porto
367 PG
N41 04.7
W008 38.2

30 - 2



COM: After TKOF contact Porto APP 121.1

ALT RESTRICTION: Climb to **FL70**

SID	Routing
(INITIAL CLIMB)	Climb on 173° to 3000 follow SID.
ERLEX 3S (Domestic traffic only)	Turn right - intcp R190 PRT - ERLEX
LULAS 3S	Turn right - 257° - intcp R235 PRT - LULAS
MANIK 3S	Turn right - intcp R179 PRT - MANIK
PESUL 3S	Turn left - 120° from PG - PESUL

© Navitech - lppr02daorg0

Change: Comms.

THIS CHART IS A PART OF NAVIGRAPH NDAC AND IS INTENDED FOR FLIGHT SIMULATION USE ONLY

WEF 18 NOV 10

30 - 3 | 20 OCT 10

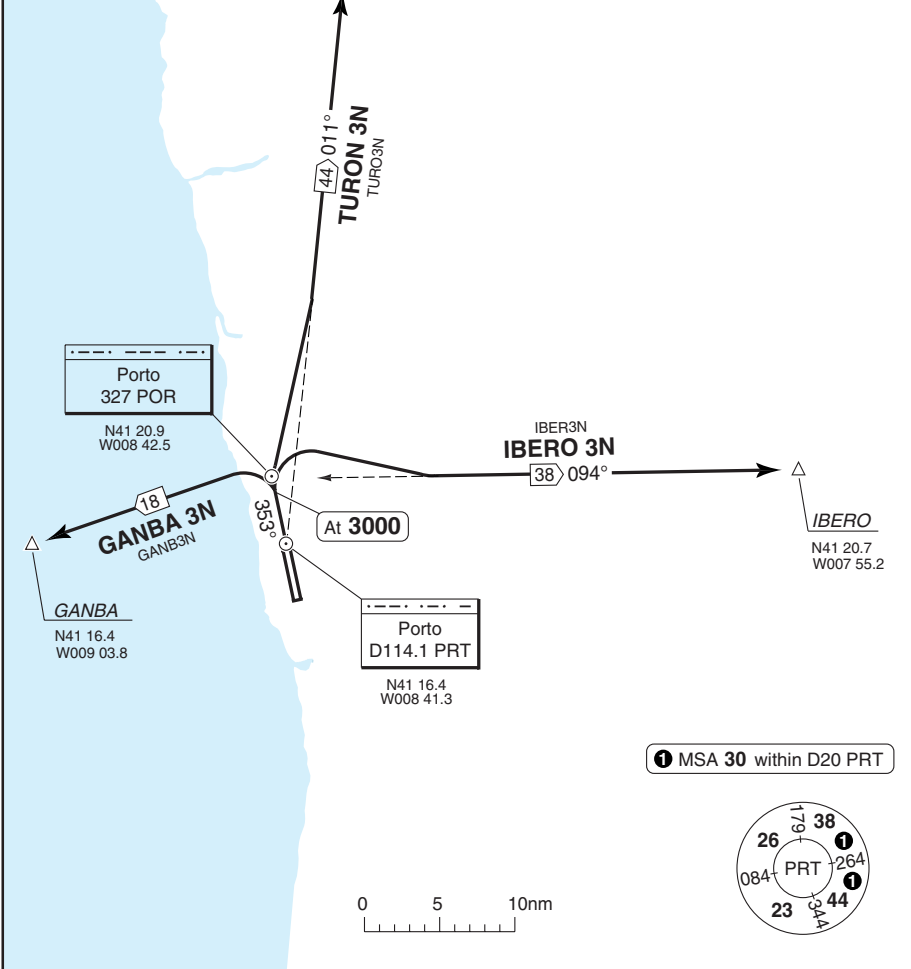
Portugal - LPPR / OPO

SID RWY 35 North, East, West

Francisco Sa Carneiro PORTO

Porto DLV 118.925	TWR 118.0	APP 121.1	ATIS (D) 124.3
118.85	118.85	118.85	

TA 4000 | AD Elev 227



COM: After TKOF contact Porto APP 121.100.
ALT RESTRICTION: Climb to **FL70**

SID	Routeing
(INITIAL CLIMB)	Climb on 353° to 3000 - follow SID.
GANBA 3N	Turn left - GANBA
IBERO 3N	Turn right - intop 094° POR - IBERO
TURON 3N	Turn right - intop R011 PRT - TURON

Change: Comms.

© Navitech - lppr03daorgo

30 - 3

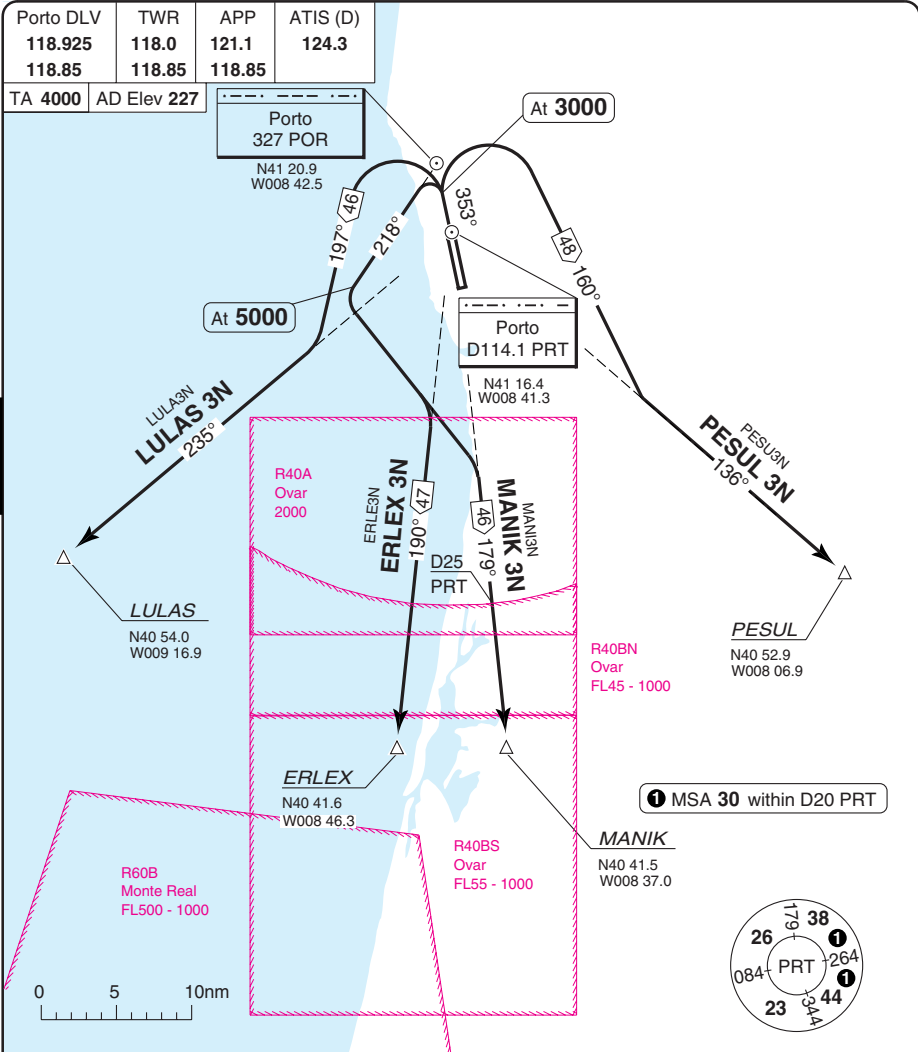
WEF 18 NOV 10

30 - 4 | 20 OCT 10

Portugal - LPPR / OPO

SID RWY 35 East, South, West

Francisco Sa Carneiro PORTO



COM: After TKOF contact Porto APP 121.100.
ALT RESTRICTION: Climb to **FL70**

SID	Routeing
(INITIAL CLIMB)	Climb on 353° to 3000 follow SID.
ERLEX 3N (Domestic traffic only)	Turn left - 218° from POR - at 5000 turn left - intcp R190 PRT - ERLEX
LULAS 3N	Turn left - 197° - intcp R235 PRT - LULAS
MANIK 3N	Turn left - 218° from POR - at 5000 turn left - intcp R179 PRT before D25 PRT - MANIK
PESUL 3N	Turn right - 160° - intcp R136 PRT - PESUL

© Navitech - lppr04daorgo

Change: Comms.

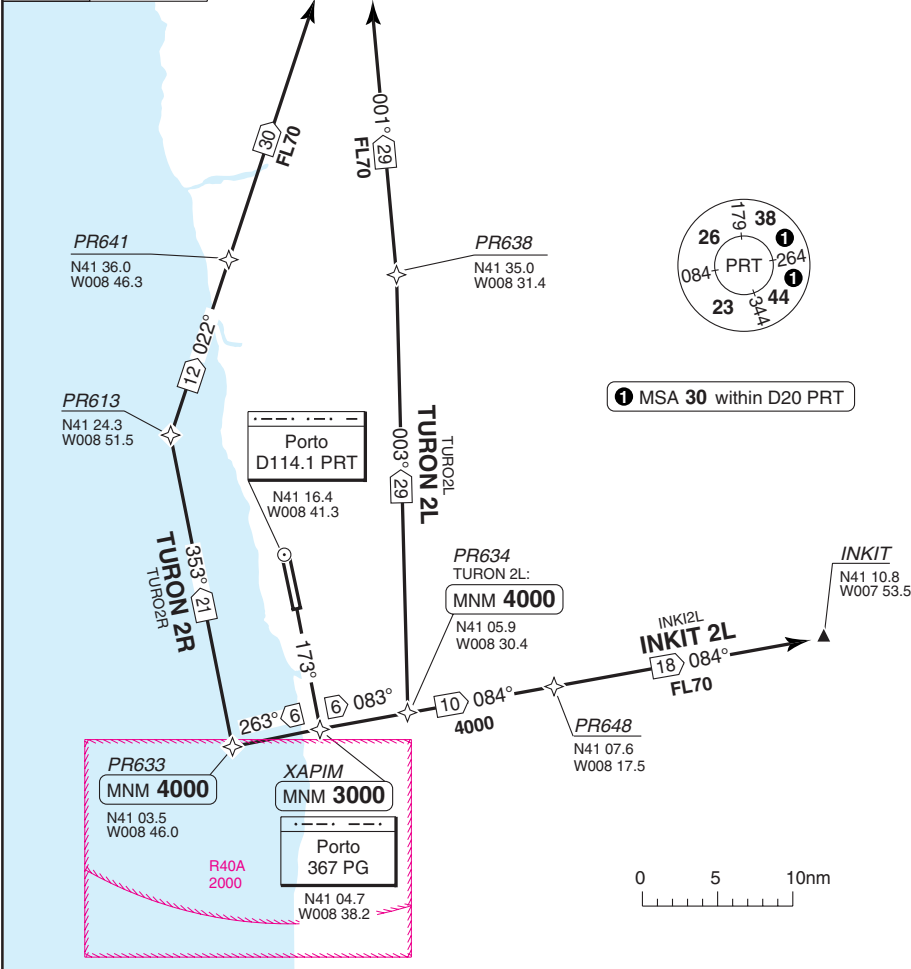
THIS CHART IS A PART OF NAVIGRAPH NDAC AND IS INTENDED FOR FLIGHT SIMULATION USE ONLY

SID RWY 17 **RNAV** FMS

Francisco Sa Carneiro **PORTO**

Porto DLV	TWR	APP	ATIS (D)
118.925	118.0	121.1	124.3
118.85	118.85	118.85	

TA 4000 | AD Elev 227



COM: After TKOF contact Porto APP 121.100.
ALT RESTRICTION: Climb to **FL70**
NOTE: ACFT unable to fly-over or abeam XAPIM / 367 PG at MNM 3000 shall inform ATC.

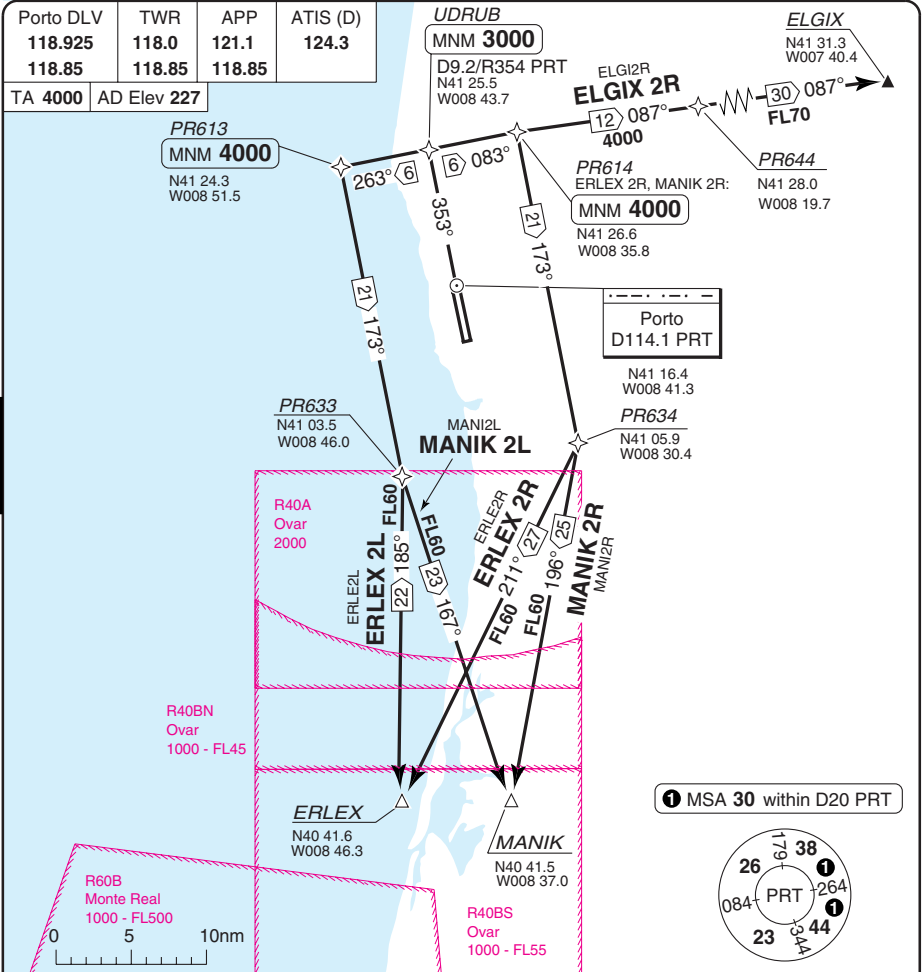
SID	Routeing	Altitudes
INITIAL CLIMB	Climb on 173° - XAPIM - at 3000 or XAPIM, whichever is earlier - follow SID.	XAPIM MNM 3000
INKIT 2L	Turn left - PR634 - PR648 - INKIT	
TURON 2L	Turn left - PR634 - PR638 - TURON	PR634 MNM 4000
TURON 2R	Turn right - PR633 - PR613 - PR641 - TURON	PR633 MNM 4000

© Navitech - lppr05daorg0

30 - 5

SID RWY 35 **RNAV** FMS

Francisco Sa Carneiro **PORTO**



COM: After TKOF contact Porto APP 121.1.

ALT RESTRICTION: Climb to **FL70**

SID	Routeing	Altitudes
INITIAL CLIMB	Climb on 353° - UDRUB - at 3000 or UDRUB, whichever is earlier - follow SID.	UDRUB MNM 3000
ELGIX 2R	Turn right - PR614 - PR644 - ELGIX	
ERLEX 2L (Domestic traffic only)	Turn left - PR613 - PR633 - ERLEX	PR613 MNM 4000
ERLEX 2R (Domestic traffic only)	Turn right - PR614 - PR634 - ERLEX	PR614 MNM 4000
MANIK 2L	Turn left - PR613 - PR633 - MANIK	PR613 MNM 4000
MANIK 2R	Turn right - PR614 - PR634 - MANIK	PR614 MNM 4000

Change: Spec update.

THIS CHART IS A PART OF NAVIGRAPH NDAC AND IS INTENDED FOR FLIGHT SIMULATION USE ONLY

© Navtech - lppr01aaorg0

Porto APP	TWR	ATIS (D)
121.1	118.0	124.3
118.85	118.85	

TL ATC AD Elev 227

SPEED

MAX 280kt between FL245-FL100.
 MAX 250kt at or below FL100.
 MAX 220kt at or below FL70.
 MAX 200kt at or below 4000ft.
 MAX between 180kt and 160kt when established on FNA and thereafter 160kt until 4nm from THR.

IAF
 D15 PRT
 N41 31.1
 W008 45.2

GANBA
 N41 16.4
 W009 03.8
 GANBA3A
 GANBA 3A
 17 078°
 3000

Porto
 D114.1 PRT
 N41 16.4
 W008 41.3

CLR limit
 Porto
 327 POR
 N41 20.9
 W008 42.5

RELVA
 N41 51.2
 W008 35.9
 RELVA3A
 RELVA 3A
 21 204°
 6000

D25
 PRT
 4000
 D20
 PRT
 3000

ASPO3A
 ASPOR 3A
 249° 28'
 7000

ASPOR
 N41 48.9
 W008 04.9

PIPAS
 N41 43.0
 W008 11.5

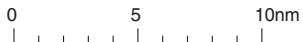
MAPOR
 N41 36.9
 W008 03.5

MAPO3A
 MAPOR 3A
 246° 33'
 7000

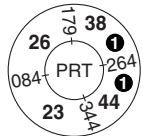
D20
 PRT
 3000

IBERO3A
 IBERO 3A
 275° 35'
 7000
 D20
 PRT
 3000

IBERO
 N41 20.7
 W007 55.2



1 MSA 30 within D20 PRT



STAR Rwy 17 from North, East, West

W/E 18 NOV 10

40 - 1 20 OCT 10

Francisco Sa Carneiro PORTO

Portugal - LPPR / OPO

THIS CHART IS A PART OF NAVIGRAPH NDAC AND IS INTENDED FOR FLIGHT SIMULATION USE ONLY

Change: Comms.

40 - 2 | 20 OCT 10

Portugal - LPPR / OPO

STAR RWY 17 from East, South, West Francisco Sa Carneiro PORTO

Porto APP	TWR	ATIS (D)
121.1	118.0	124.3
118.85	118.85	

TL ATC AD Elev 227

SPEED

MAX 280kt between FL245-FL100.
 MAX 250kt at or below FL100.
 MAX 220kt at or below FL70.
 MAX 200kt at or below 4000ft.
 MAX between 180kt and 160kt when established on FNA and thereafter 160kt until 4nm from THR.

CLR limit

Porto
327 POR
N41 20.9
W008 42.5

Porto
367 PG
N41 04.7
W008 38.2

Porto
D114.1 PRT
N41 16.4
W008 41.3

LULAS
N40 54.0
W009 16.9

LULAS 3A
N40 54.0
W009 16.9

PESLU 3A
307° (26)
6000

PESLU

MANI3A
002° (23)
6000

MANI3A
N40 41.5
W008 37.0

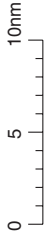
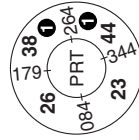
ERLEX 3A
019° (24)
6000

ERLEX
N40 41.6
W008 46.3

R40BN
Ovar
FL45-1000

R40A
Ovar
2000

1 MSA 30 within D20 PRT



R40BS
Ovar
FL55-1000

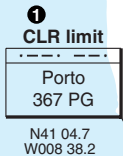
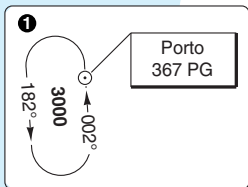
© Navtech - lppr03aaorg0

Porto APP	TWR	ATIS (D)
121.1	118.0	124.3
118.85	118.85	

TL ATC AD Elev 227

SPEED

MAX 280kt between FL245-FL100.
 MAX 250kt at or below FL100.
 MAX 220kt at or below FL70.
 MAX 200kt at or below 4000ft.
 MAX between 180kt and 160kt when established on FNA and thereafter 160kt until 4nm from THR.



RELVA
 RELVA 3B
 RELVA 3B
 191° (35)
 6000

D25
 PRT

4000

Porto
 D114.1 PRT
 N41 16.4
 W008 41.3

12

173°

PIPAS
 N41 43.0
 W008 11.5

BARGA
 D20 PRT
 N41 24.5
 W008 17.0

3000

223°

D20
 PRT

3000

ASPO 3B
 197° (19)
 7000

MAPOR 3B
 223° (16)
 7000

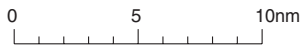
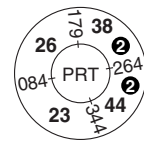
ASPOR
 N41 48.9
 W008 04.9

MAPOR
 N41 36.9
 W008 03.5

IBERO
 N41 20.7
 W007 55.2

IBERO 3B
 248° (37)
 7000

② MSA 30 within D20 PRT



40 - 3

STAR Rwy 35 from North, East, West
 WEF 18 NOV 10
 40 - 3 | 20 OCT 10
 Francisco Sa Carneiro PORTO
 Portugal - LPPR / OPO

THIS CHART IS A PART OF NAVIGRAPH NDAC AND IS INTENDED FOR FLIGHT SIMULATION USE ONLY
 Change: Comms

40 - 4 | 20 OCT 10

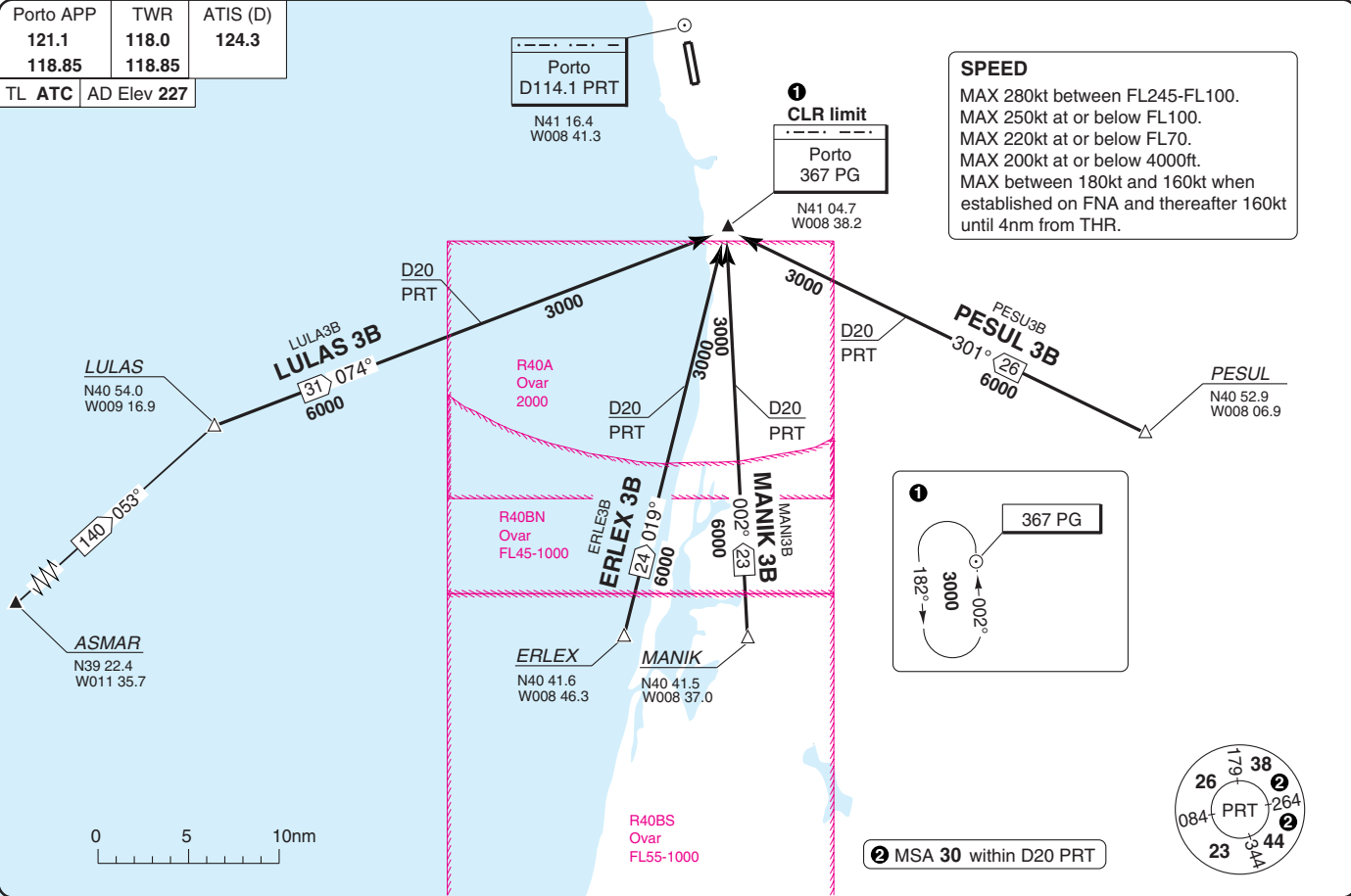
40 - 4 | 20 OCT 10

Portugal - LPPR / OPO

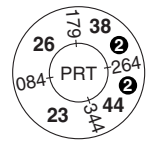
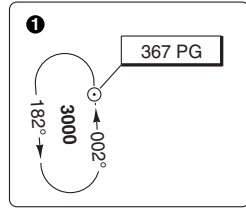
STAR RWY 35 from East, South, West

Francisco Sa Carneiro PORTO

Porto APP	TWR	ATIS (D)
121.1	118.0	124.3
118.85	118.85	
TL ATC	AD Elev 227	



SPEED
 MAX 280kt between FL245-FL100.
 MAX 250kt at or below FL100.
 MAX 220kt at or below FL70.
 MAX 200kt at or below 4000ft.
 MAX between 180kt and 160kt when established on FNA and thereafter 160kt until 4nm from THR.



2 MSA 30 within D20 PRT

40 - 4

© Navtech - lppr4aarg0

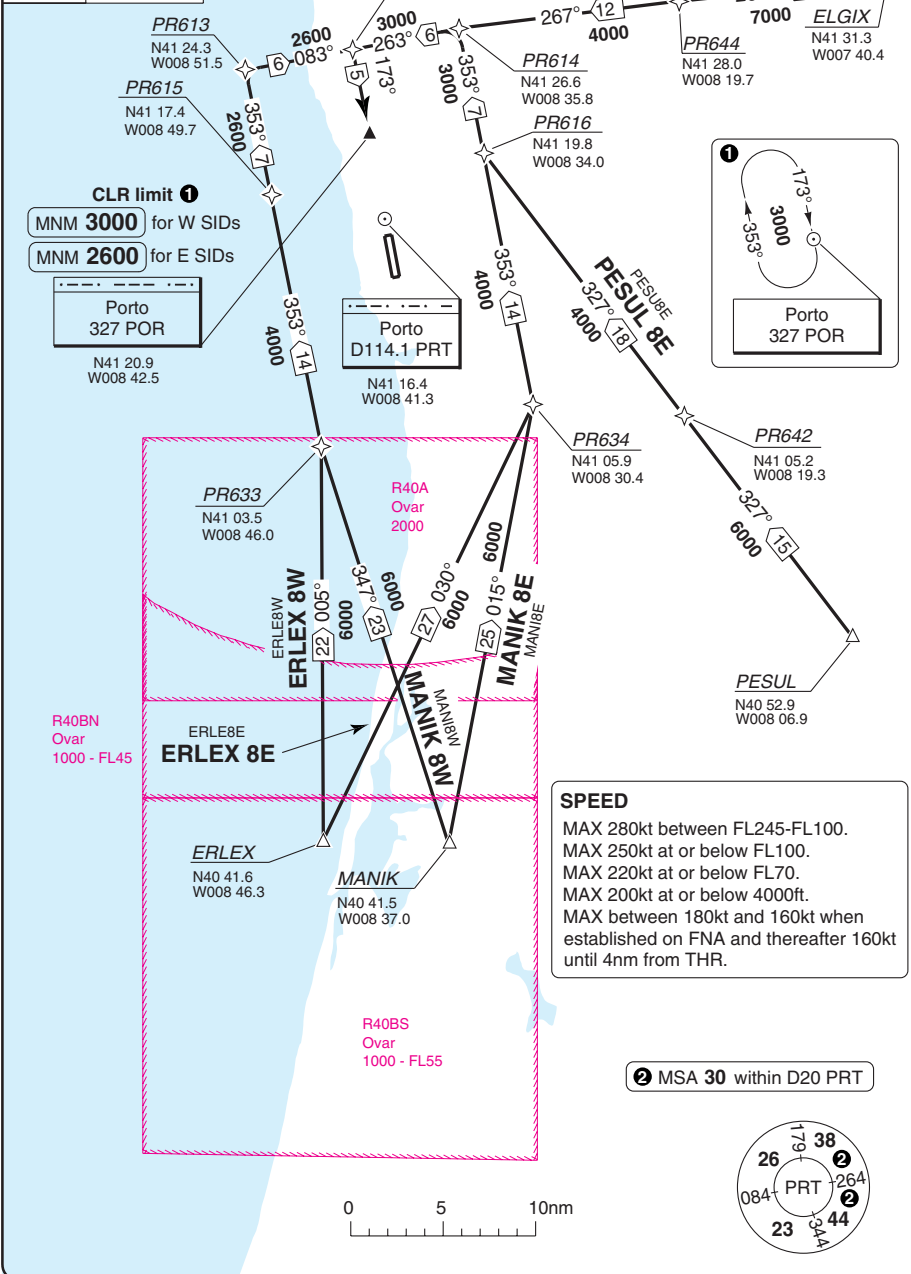
Change: Comms.

THIS CHART IS A PART OF NAVIGRAPH NDAC AND IS INTENDED FOR FLIGHT SIMULATION USE ONLY

STAR RWY 17 **RNAV** ECHO, WHISKY

Francisco Sa Carneiro **PORTO**

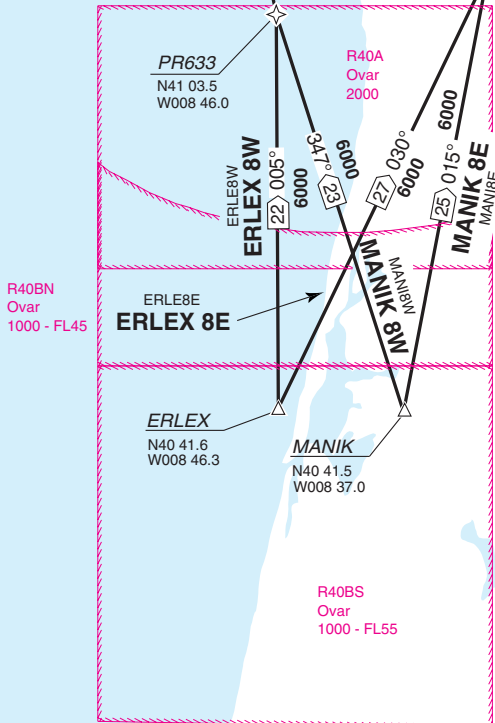
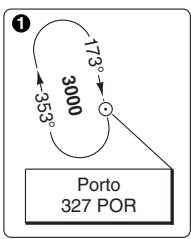
Porto APP	TWR	ATIS (D)
121.1	118.0	124.3
118.85	118.85	
TL ATC	AD Elev 227	



CLR limit 1
MNM 3000 for W SIDs
MNM 2600 for E SIDs

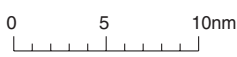
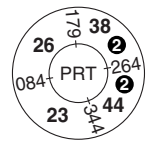
Porto 327 POR
 N41 20.9
 W008 42.5

Porto D114.1 PRT
 N41 16.4
 W008 41.3



SPEED
 MAX 280kt between FL245-FL100.
 MAX 250kt at or below FL100.
 MAX 220kt at or below FL70.
 MAX 200kt at or below 4000ft.
 MAX between 180kt and 160kt when established on FNA and thereafter 160kt until 4nm from THR.

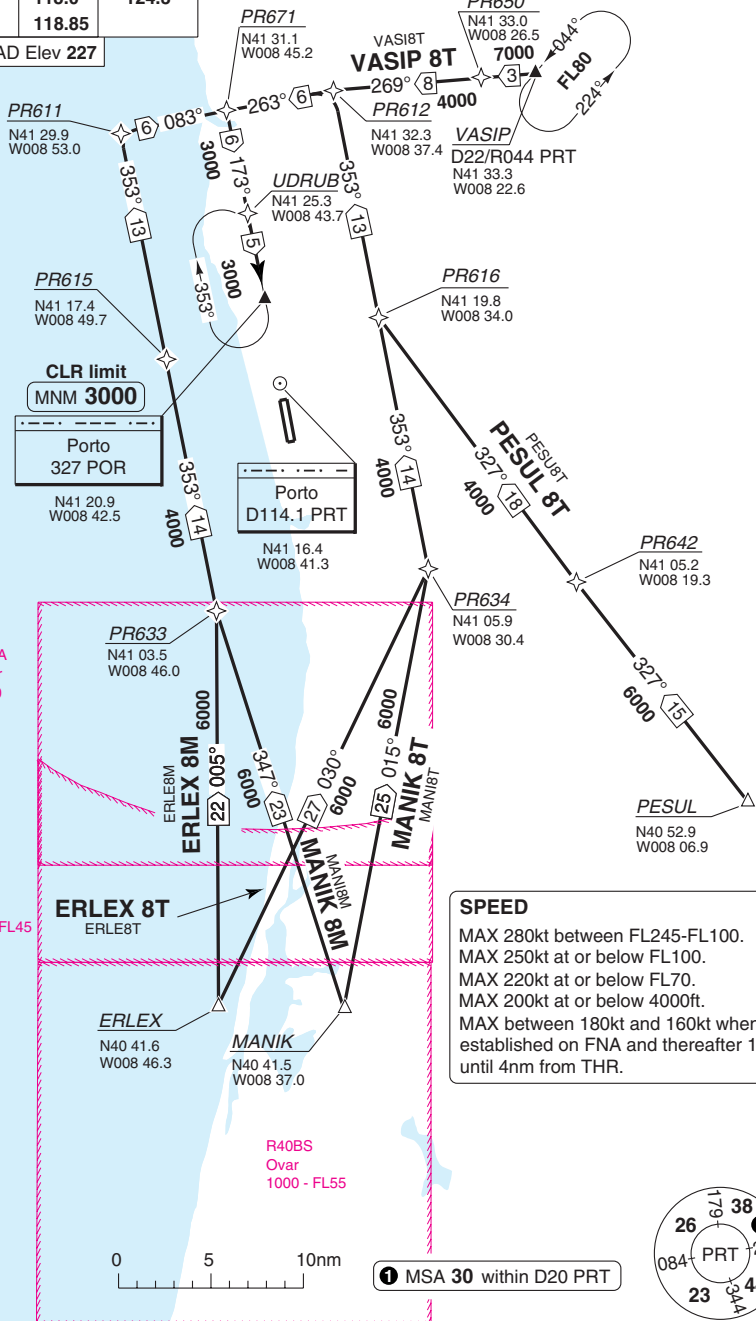
2 MSA 30 within D20 PRT



STAR RWY 17 **FNAV** MIKE, TANGO

Francisco Sa Carneiro **PORTO**

Porto APP	TWR	ATIS (D)
121.1	118.0	124.3
118.85	118.85	
TL ATC	AD Elev 227	



40 - 6

© Navitech - lppr06aairg0

Change: Spec update.

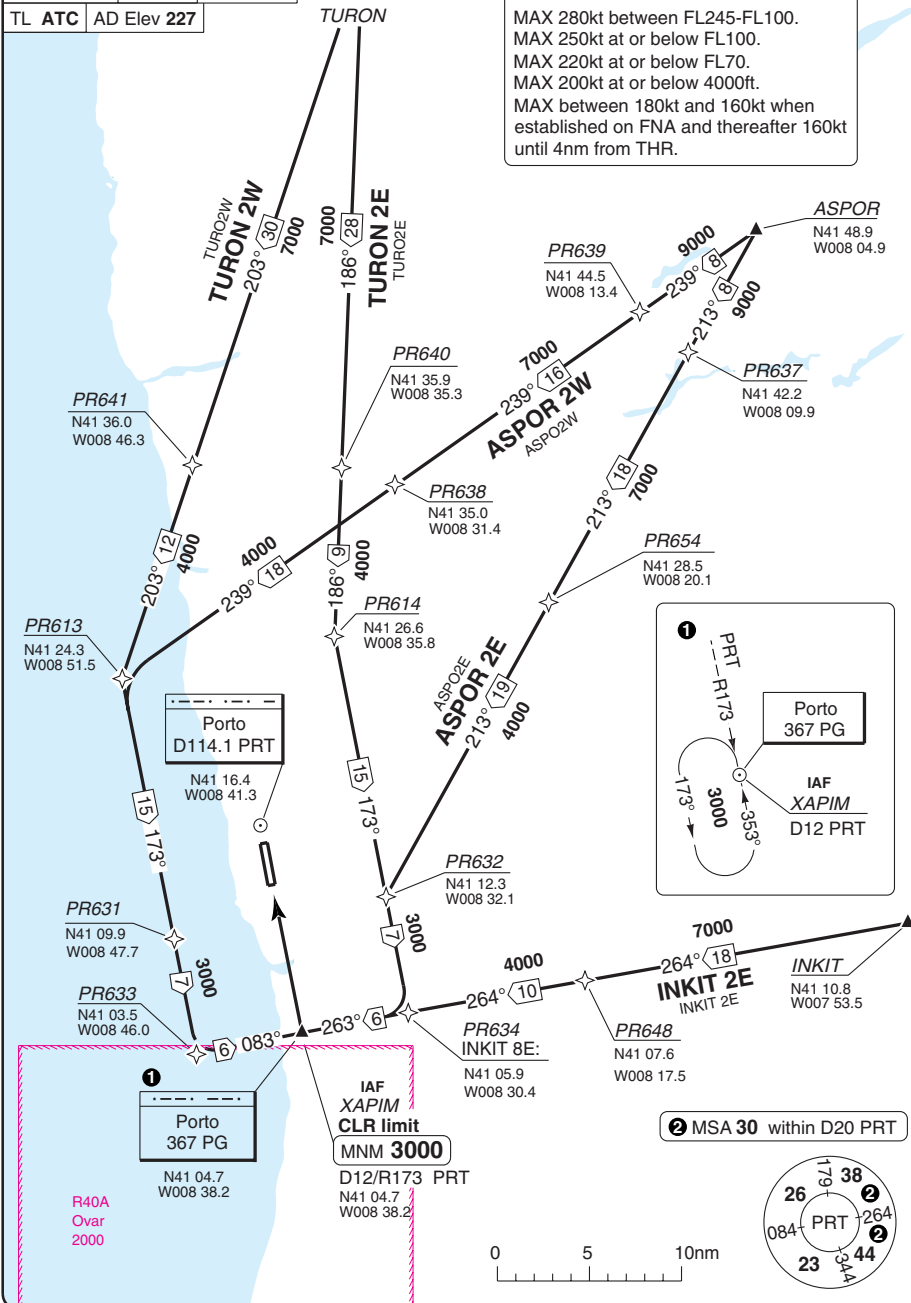
THIS CHART IS A PART OF NAVIGRAPH NDAC AND IS INTENDED FOR FLIGHT SIMULATION USE ONLY

STAR RWY 35 **RNAV** ECHO, WHISKEY

Francisco Sa Carneiro **PORTO**

Porto APP	TWR	ATIS (D)
121.1	118.0	124.3
118.85	118.85	
TL ATC	AD Elev 227	

SPEED
 MAX 280kt between FL245-FL100.
 MAX 250kt at or below FL100.
 MAX 220kt at or below FL70.
 MAX 200kt at or below 4000ft.
 MAX between 180kt and 160kt when established on FNA and thereafter 160kt until 4nm from THR.



40 - 7

© Navitech - lppr07aaorgo

Change: Spec update.

THIS CHART IS A PART OF NAVIGRAPH NDAC AND IS INTENDED FOR FLIGHT SIMULATION USE ONLY

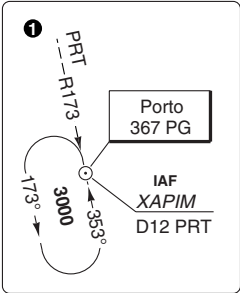
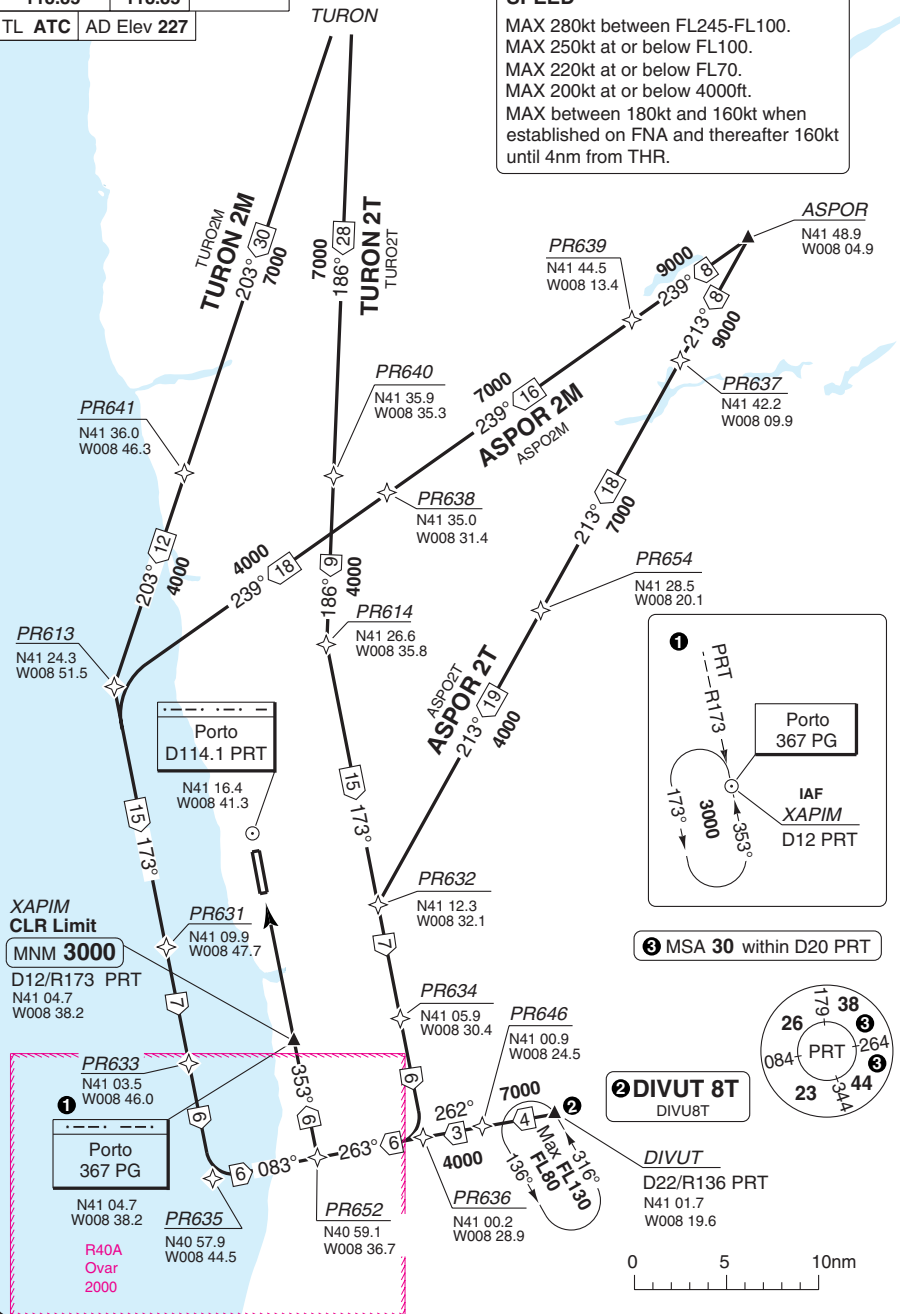
STAR RWY 35 **RNAV** MIKE, TANGO

Francisco Sa Carneiro **PORTO**

Porto APP	TWR	ATIS (D)
121.1	118.0	124.3
118.85	118.85	
TL ATC	AD Elev 227	

SPEED
 MAX 280kt between FL245-FL100.
 MAX 250kt at or below FL100.
 MAX 220kt at or below FL70.
 MAX 200kt at or below 4000ft.
 MAX between 180kt and 160kt when established on FNA and thereafter 160kt until 4nm from THR.

40 - 8

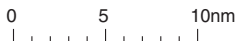


③ MSA 30 within D20 PRT



② DIVUT 8T
 DIVU8T

DIVUT
 D22/R136 PRT
 N41 01.7
 W008 19.6



© Navtech - lppr08aaoorg

Change: Spec update.

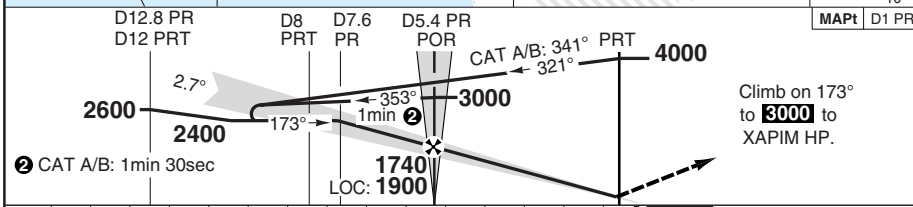
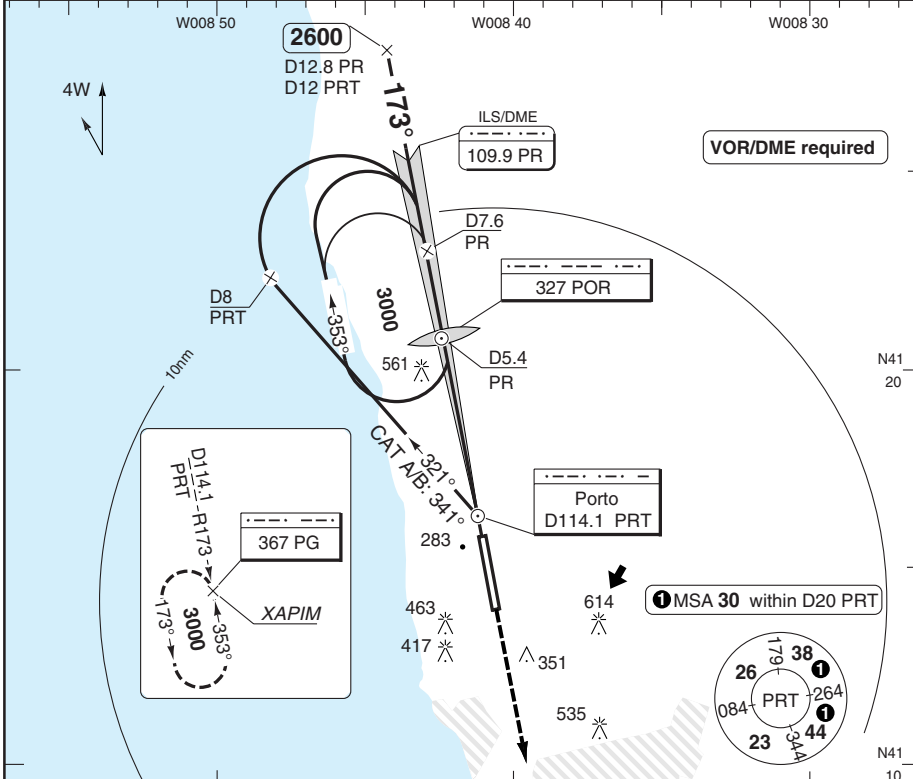
THIS CHART IS A PART OF NAVIGRAPH NDAC AND IS INTENDED FOR FLIGHT SIMULATION USE ONLY

ILS RWY 17

Francisco Sa Carneiro **PORTO**

Porto APP 121.1 118.85	TWR 118.0 118.85	ATIS (D) 124.3
--	--------------------------------------	--------------------------

ILS/DME 109.9 PR	FAT 173°	DTHR Elev 151	AD Elev 227	TL ATC	TA 4000
-------------------------	-----------------	----------------------	--------------------	--------	----------------



nm 15 14 13 12 11 10 9 8 7 6 5 4 3 2 1 0	TCH 52
--	--------

ACFT	CAT II a	ILS+DME a	LOC+DME a	Circling b	Circling c	b West of RWY	c East of RWY	DME PR	3.0° ALT 3	LDA 3180x45 10433x147ft P 2.7° (65)
A				950 (723) 1.5km	950 (723) 1.5km					
B	RA 108 300m	360 (200) 550m	590 (440) 1300m	950 (723) 1.6km	950 (723) 1.6km			7	2400	
C				950 (723) 2.4km	1280 (1053) 2.4km			6	2090	
D				950 (723) 3.6km	1280 (1053) 3.6km			5	1780	
								4	1460	
								3	1150	
								2	830	

GS 80 100 120 140 160

ROD 3.0° 3 420 530 640 740 850

FAF-MAPt 3:18 2:38 2:12 1:53 1:39

a MNM Missed APCH CLIMB
GRADIENT 4.9% up to 3000.
If unable to comply, advise ATC.

b West of RWY
c East of RWY

3 LOC only

FALS

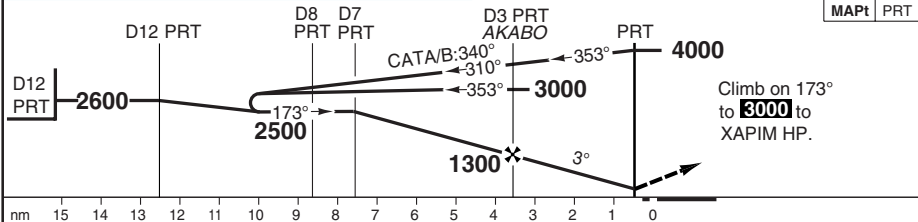
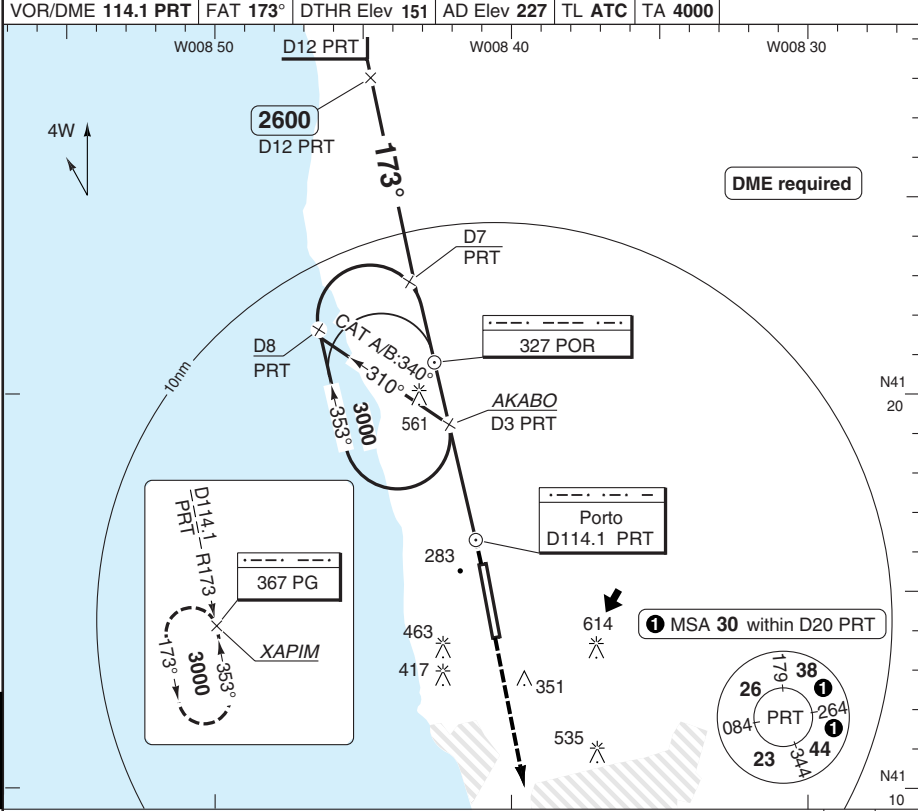
© Navtech - lppr01iaip00

50 - 1

VOR RWY 17

Francisco Sa Carneiro PORTO

Porto APP 121.1 118.85	TWR 118.0 118.85	ATIS (D) 124.3				
VOR/DME 114.1 PRT	FAT 173°	DTHR Elev 151	AD Elev 227	TL ATC	TA 4000	



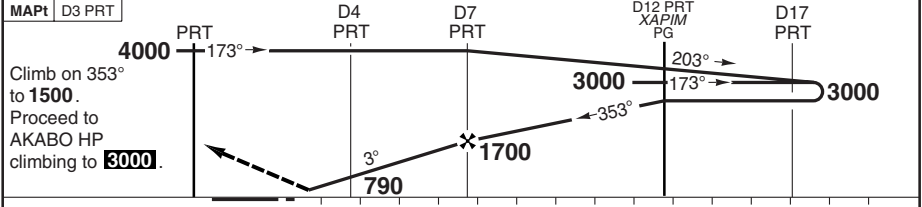
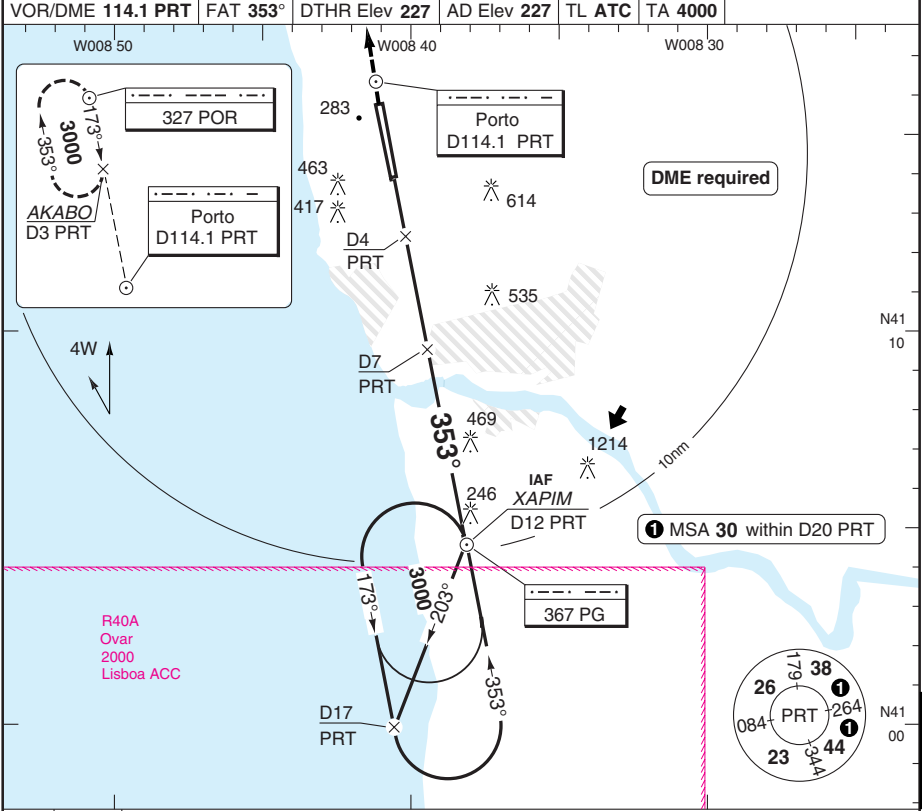
ACFT	VOR+DME a	Circling b	Circling c	b West of RWY	c East of RWY	DME PRT	3° ALT	LDA 3180x45 10433x147ft P 2.7° (65)
A	590 (440) 1300m	950 (723) 1.5km	950 (723) 1.5km	a MNM Missed APCH CLIMB GRADIENT 4.9% up to 3000. If unable to comply advise ATC.		7	2500	
B		950 (723) 1.6km	950 (723) 1.6km			6	2190	
C		950 (723) 2.4km	1280 (1053) 2.4km			5	1880	
D		950 (723) 3.6km	1280 (1053) 3.6km			4	1570	
GS	80	100	120	140	160	3	1300	
ROD 3°	420	530	630	740	840	2	950	
						1	640	

50 - 2
© Navitech - lppr02iaip00
EU OPS

VOR RWY 35

Francisco Sa Carneiro PORTO

Porto APP 121.1 118.85	TWR 118.0 118.85	ATIS (D) 124.3
VOR/DME 114.1 PRT	FAT 353°	DTHR Elev 227
		AD Elev 227
		TL ATC
		TA 4000



MAPt	D3 PRT	D4 PRT	D7 PRT	D12 PRT XAPIM PG	D17 PRT	
ACFT	VOR+DME	Circling a	Circling b	a West of RWY	b East of RWY	
A	600 (380) 1000m	950 (723) 1.5km	950 (723) 1.5km	DME 3.0° PRT ALT	LDA 3330x45 10925x147ft P 3° (48)	
B		950 (723) 1.6km	950 (723) 1.6km			7 1700
C		950 (723) 2.4km	1280 (1053) 2.4km			6 1400
D		950 (723) 3.6km	1280 (1053) 3.6km			5 1120
				4 790		
GS	80	100	120	140	160	
ROD 3.0°	420	530	630	740	840	

© Navtech - lppr03iaip00

50 - 3

WEF 18 NOV 10

50 - 4 | 20 OCT 10

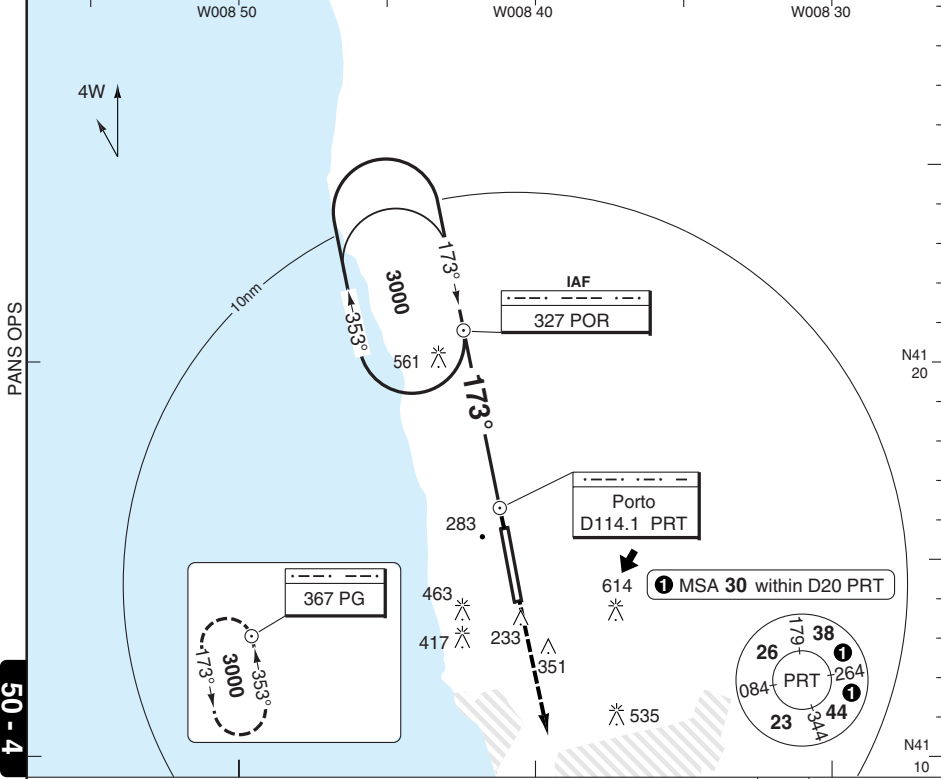
Portugal - LPPR / OPO

NDB RWY 17

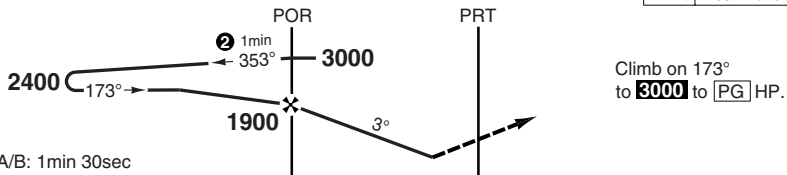
Francisco Sa Carneiro PORTO

Porto APP 121.1 118.85	TWR 118.0 118.85	ATIS (D) 124.3
------------------------------	------------------------	-------------------

NDB 327 POR	FAT 173°	DTHR Elev 151	AD Elev 227	TL ATC	TA 4000
-------------	----------	---------------	-------------	--------	---------

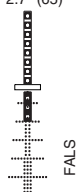


MAPt 4.65nm after POR



nm	13	12	11	10	9	8	7	6	5	4	3	2	1	0	
ACFT	NDB a			Circling b		Circling c		GS							LDA 3180x45 10433x147ft P 2.7° (65)
A	710 (560)			950 (723)		950 (723)		80	100	120	140	160	ROD 3.0°		
B	1500m			1.5km		1.5km		420	530	630	740	850	FAF +20s		
C	710 (560)			950 (723)		1280 (1053)		1760	1730	1690	1660	1620	+40s		
D	1800m			2.4km		2.4km		1620	1550	1480	1410	1340	+60s		
				950 (723)		1280 (1053)		1480	1380	1270	1160	1060	FAF-710		
				3.6km		3.6km		3:29	2:47	2:19	1:59	1:44	FAF-MAPt		

a MNM Missed APCH CLIMB GRADIENT 4.9% up to 3000. If unable to comply, advise ATC.
b West of RWY
c East of RWY



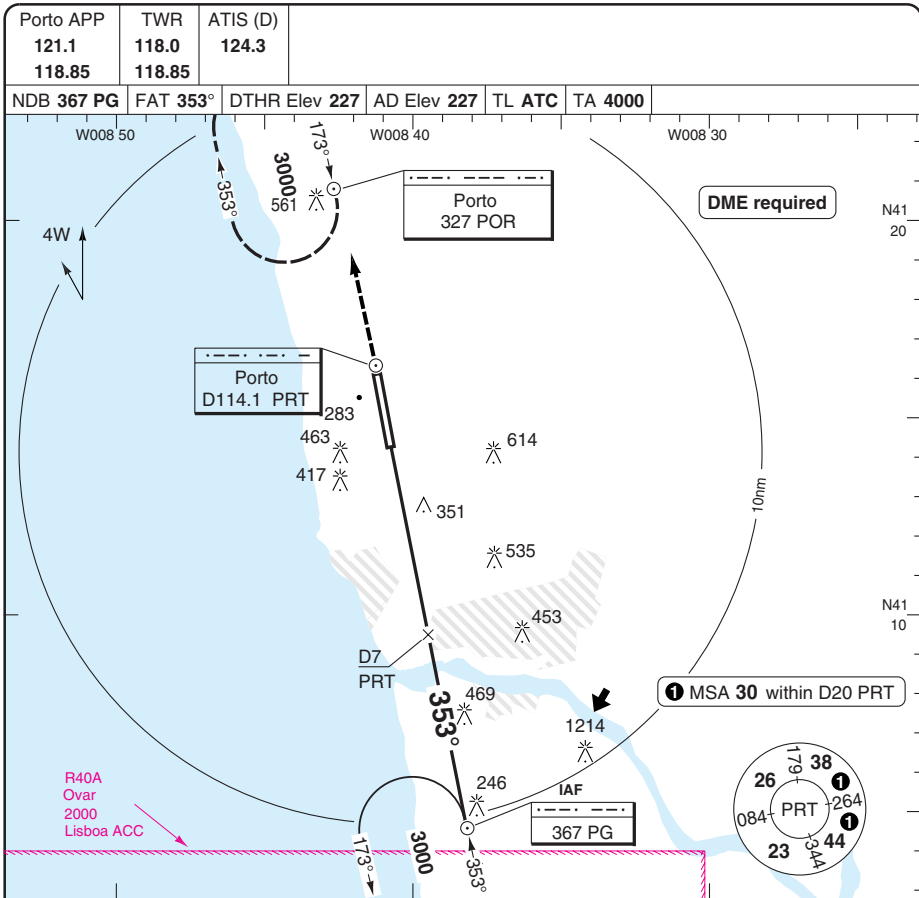
© Navtech - lppr04iap00 EU OPS

Change: Comms.

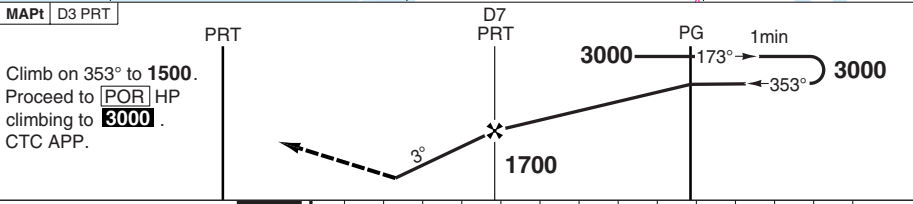
THIS CHART IS A PART OF NAVIGRAPH NDAC AND IS INTENDED FOR FLIGHT SIMULATION USE ONLY

NDB RWY 35

Francisco Sa Carneiro PORTO



50 - 5



ACFT	NDB+DME	Circling a	Circling b	a) West of RWY	b) East of RWY	DME PRT	3° ALT	LDA 3330x45 10925x147ft P 3° (48)
A	950 (730)	950 (723) 1.5km	950 (723) 1.5km			7	1700	<p>FALS</p>
B	1500m	950 (723) 1.6km	950 (723) 1.6km			6	1400	
C	950 (730)	950 (723) 2.4km	1280 (1053) 2.4km			5	1100	
D	2400m	950 (723) 3.6km	1280 (1053) 3.6km					

GS	80	100	120	140	160
ROD 3°	420	530	630	740	840

Change: Comms.

JAR-OPS Landing Minima Francisco Sa Carneiro PORTO

The following Minima is for Public Transport aircraft and conforms to JAR-OPS1 regulations.

STRAIGHT-IN APPROACH		C				D			
R/W	Procedure	DA/ MDA QNH ft	DH/ MDH QFE ft	RVR m	RVR No ALS m	DA/ MDA QNH ft	DH/ MDH QFE ft	RVR m	RVR No ALS m
17	ILS/DME (M/App 4.9%)	360	200	550	1000	360	200	550	1000
17	LOC/DME (M/App 4.9%)	600	440	1000	1800	600	440	1400	2000
17	VOR/DME (M/App 4.9%)	600	440	1000	1800	600	440	1400	2000
17	NDB (M/App 4.9%)	720	560	1200	2000	720	560	1600	2000
35	VOR/DME	610	380	1000	1800	610	380	1400	2000
35	NDB/DME	960	730	1400	2000	960	730	1800	2000

Notes:

CIRCLING		C			D		
R/W	Procedure	MDA QNH ft	MDH QFE ft	Vis m	MDA QNH ft	MDH QFE ft	Vis m
	All procs, East of RWY	1280	1060	2400	1280	1060	3600
	All procs, West of RWY	950	730	2400	950	730	3600

Notes:

TAKE-OFF		C	D
Runway	Facilities	m	m
17, 35	RCLL(H)+REDL(H)+Multi RVR (1)	125	150
17, 35	RCLL+REDL+Multi RVR	150	200
17, 35	RCLL+REDL	200	250
17, 35	RCL and/or REDL (2)	250	300
All	Nil (Day only)	500	500

Notes:

- (1) Subject to Approval.
- (2) For night operations, at least runway edge and end lights required.

JAR-OPS Landing Minima Francisco Sa Carneiro PORTO

The following Minima is for Public Transport aircraft and conforms to JAR-OPS1 regulations.

STRAIGHT-IN APPROACH		A				B			
R/W	Procedure	DA/ MDA QNH ft	DH/ MDH QFE ft	RVR m	RVR No ALS m	DA/ MDA QNH ft	DH/ MDH QFE ft	RVR m	RVR No ALS m
17	ILS/DME (M/App 4.9%)	360	200	550	1000	360	200	550	1000
17	LOC/DME (M/App 4.9%)	600	440	900	1500	600	440	1000	1500
17	VOR/DME (M/App 4.9%)	600	440	900	1500	600	440	1000	1500
17	NDB (M/App 4.9%)	720	560	1000	1500	720	560	1200	1500
35	VOR/DME	610	380	900	1500	610	380	1000	1500
35	NDB/DME	960	730	1200	1500	960	730	1400	1500

Notes:

CIRCLING		A			B		
R/W	Procedure	MDA QNH ft	MDH QFE ft	Vis m	MDA QNH ft	MDH QFE ft	Vis m
All procs, East of RWY		950	730	1500	950	730	1600
All procs, West of RWY		950	730	1500	950	730	1600

Notes:

TAKE-OFF		A	B
Runway	Facilities	m	m
17, 35	RCLL(H)+REDL(H)+Multi RVR (1)	125	125
17, 35	RCLL+REDL+Multi RVR	150	150
17, 35	RCLL+REDL	200	200
17, 35	RCL and/or REDL (2)	250	250
All	Nil (Day only)	500	500

Notes:

- (1) Subject to Approval.
- (2) For night operations, at least runway edge and end lights required.

JAR-OPS Landing Minima

Francisco Sa Carneiro **PORTO**

The following Minima is for Public Transport aircraft and conforms to JAR-OPS1 regulations.

CAT II

Special aircrew and aircraft certification required.

Runways	C				D			
	DA	DH	RA	RVR	DA	DH	RA	RVR
	QNH	QFE			QNH	QFE		
	ft	ft	ft	m	ft	ft	ft	m
17 (M/App 4.9%) (1)	251	100	108	300	251	100	108	350

Notes:

- 1) Cat D RVR may be reduced to 300m when conducting autoland.

Runways	A				B			
	DA	DH	RA	RVR	DA	DH	RA	RVR
	QNH	QFE			QNH	QFE		
	ft	ft	ft	m	ft	ft	ft	m
17 (M/App 4.9%)	251	100	108	300	251	100	108	300

Notes: