

Airport information:

Country: Portugal

City: PICO

Coordinates: N 38° 33.3', W 028° 26.5'

Elevation: 191

Customs: Customs O/R 24HRS

Fuel: Jet A1, Jet A1

RFF: CAT 5, CAT 6 to CAT 8 by prior arrangement with Airport Director

hours: AD: 0900-1200, 1400-1700LT. 2 HR prior notice.

Runways:

Runway 09

Takeoff length: 1655, Landing length: 1580

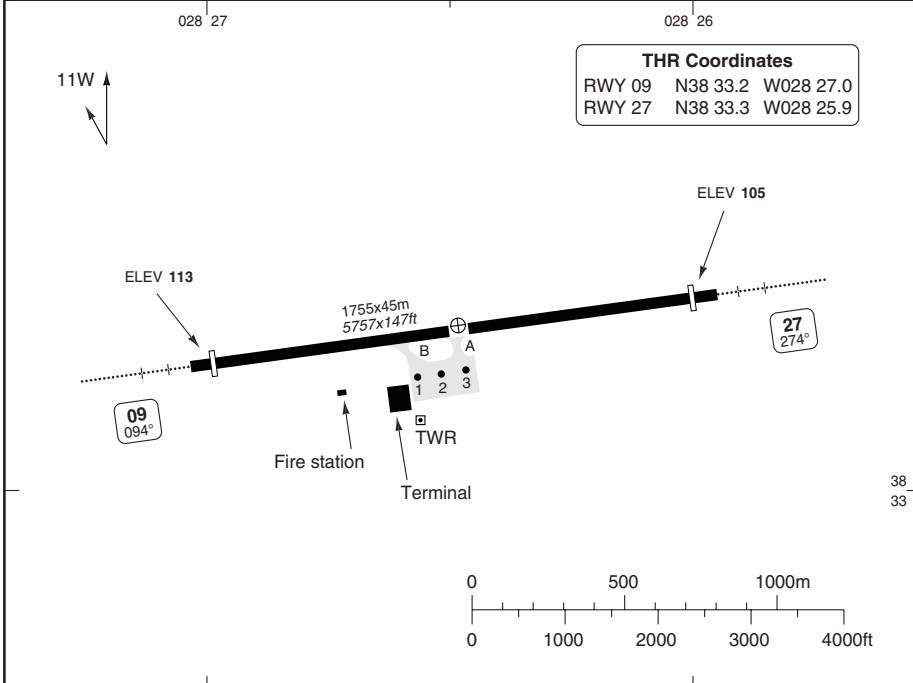
Runway 27

Takeoff length: 1745, Landing length: 1655

AERODROME

Horta TWR 118.0	Pico AFIS 122.7	
---------------------------	---------------------------	--

AD Elev 109	ARP: N38 33.5 W028 26.7	RFF: CAT 5 (CAT 6-8 PPR)	AD HR: 09-12, 14-17
--------------------	-------------------------	--------------------------	---------------------



38
33

RWY	Slope	TORA m/ft	LDA m/ft	ALS	REDL	Additional
09	-0.1	1655 / 5429	1580 / 5183	L-E ①	L	P 3° (48)
27	+0.1	1745 / 5725	1655 / 5429	H-E ①	H	P 3° (48)

① 420m

JAR OPS TAKE OFF MINIMA		
RWY	Facilities	RVR B C
09/27	RCL (day only) or RCL + REDL	400m
	NIL (day only)	500m

GENERAL INFORMATION

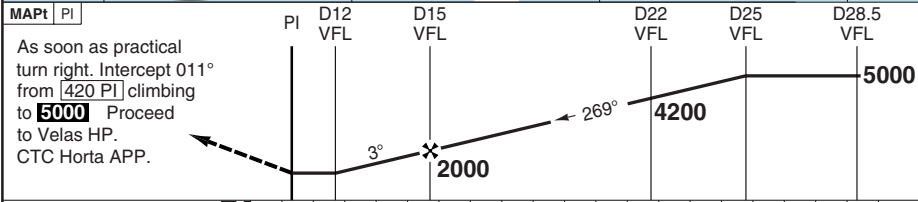
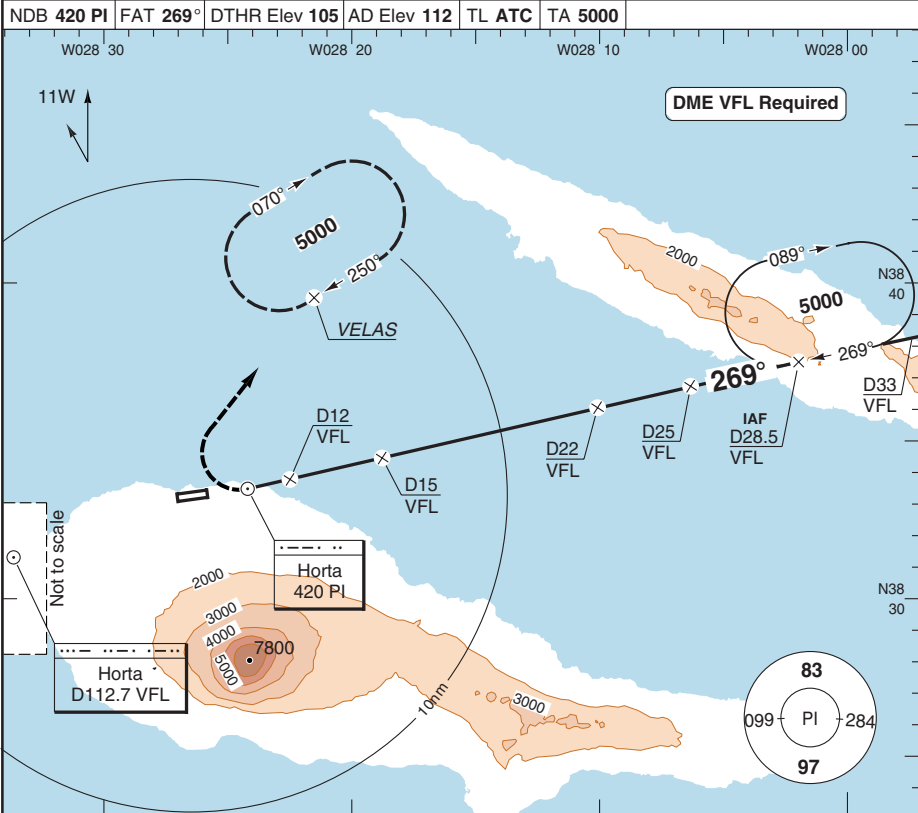
- WARNING**
 Birds are a frequent hazard.
 Frequent winshear/turbulence.
 Due to high terrain, flight are not permitted south of RWY 09/27.
- NAV RESTRICTION**
 NDB PI unusable:
 130° - 240°

© Navtech EAG - lppi011aorgo

Reverse side blank

NDB RWY 27

Horta APP 119.7	TWR 118.0	Pico AFIS 122.7	
NDB 420 PI	FAT 269°	DTHR Elev 105	AD Elev 112 TL ATC TA 5000



MAPt PI	PI	D12 VFL	D15 VFL	D22 VFL	D25 VFL	D28.5 VFL				
As soon as practical turn right. Intercept 011° from 420 PI climbing to 5000 . Proceed to Velas HP. CTC Horta APP.										
0 1 2 3 4 5 6 7 8 9 10 11 12 13 14 15 16 17 18 19 20 nm										
STATE	ACFT	NDB+DME	Circling a	a N of RWY 27			DME VFL	3.1° ALT	LDA 1655x45	
	B	1000 (895) 2.5km	1000 (888) 2.5km				24.3	5000	5429x147ft P 3'(48)	
	C	1020 (915) 4.6km	1020 (908) 4.6km				22	4270		
	GS	100	120	140	160		20	3620		
	ROD 3.1°	550	650	760	870		18	2980		
	FAF-MAPt	Not Published						16	2330	
							14	1680		
							13	1360		
							12.0	1020		
									INTERMEDIATE 420	

© Navtech EAG - lpp101iaip00

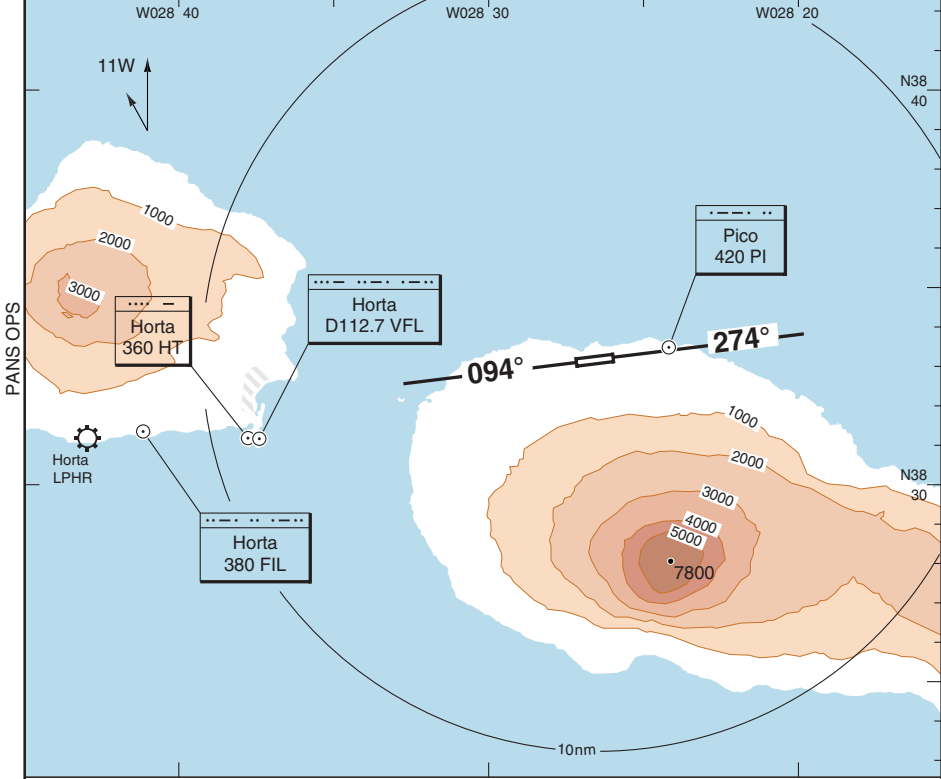
Change: Proc, New spec.

THIS CHART IS A PART OF NAVIGRAPH NDAC AND IS INTENDED FOR FLIGHT SIMULATION USE ONLY

VISUAL RWY 09/27

Horta APP 119.7	TWR 118.0	Pico AFIS 122.7	
---------------------------	---------------------	---------------------------	--

DTHR Elev 113/105	AD Elev 112	TL ATC	TA 5000
--------------------------	--------------------	--------	----------------



NO PROCEDURE REPORTED

© NavTech EAG - lpp102laip00

LDA 1655x45 5429x147ft P 3° (48)	LDA 1580x45 5183x147ft P 3° (48)
INTERMEDIATE 27	INTERMEDIATE 09
420	420

Change: Renumered, COM, APL-box, New spec.