

Airport information:

Country: Portugal

City: PONTA DELGADA

Coordinates: N 37° 44.5', W 025° 41.9'

Elevation: 259

Customs: Customs

Fuel: Jet A1

RFF: CAT 7, CAT 8/9 by prior arrangement.

hours: 0615-2400

Runways:

Runway 12

Takeoff length: 2353, Landing length: 2323

Runway 30

Takeoff length: 2426, Landing length: 2279

WEF 25 AUG 11

10 - 1 | 27 JUL 11

Portugal - LPPD / PDL

AERODROME

Joao Paulo II PONTA DELGADA

10 - 1

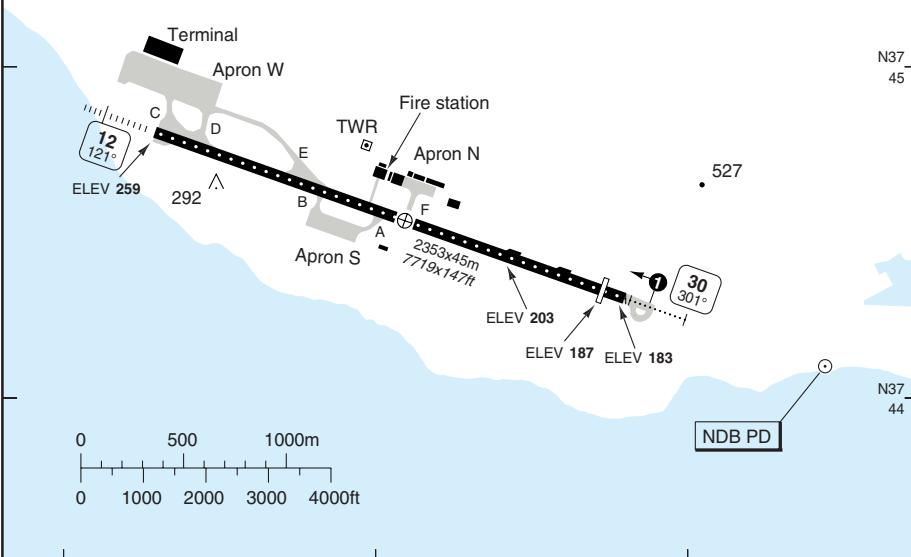
Ponta Delgada TWR
118.3

AD Elev 259 | ARP: N37 44.5 W025 41.9 | RFF: CAT 7, CAT 8 and 9 avbl PPR | AD HR: H24

W025 43 | W025 42 | W025 41



THR Coordinates
RWY 12 N37 44.8 W025 42.7
RWY 30 N37 44.3 W025 41.2



RWY	Slope	TORA m/ft	LDA m/ft	ALS	REDL	RCLL	Additional
12	-1.0	2353 / 7719	2353 / 7719	L-D ②	H	30m	P 3°/L/R (68)
30	+1.0	2426 / 7959 ①	2279 / 7477	H-E ③	H	30m	P 3°/L/R (68)

② 194m. ③ 300m.

EU OPS TAKE OFF MINIMA

RWY	Facilities	RVR				
		A	B	C	D	
12/30	RCLL + REDL			LVTO	200m	250m
	RCL (day only) or RCL + REDL			LVTO	250m	300m
	RCL (day only) or RCL + REDL				400m	400m
	NIL (day only)				500m	500m

© Navitech - lppd01laorg0

Change: New spec.

THIS CHART IS A PART OF NAVIGRAPH NDAC AND IS INTENDED FOR FLIGHT SIMULATION USE ONLY

AERODROME Parking

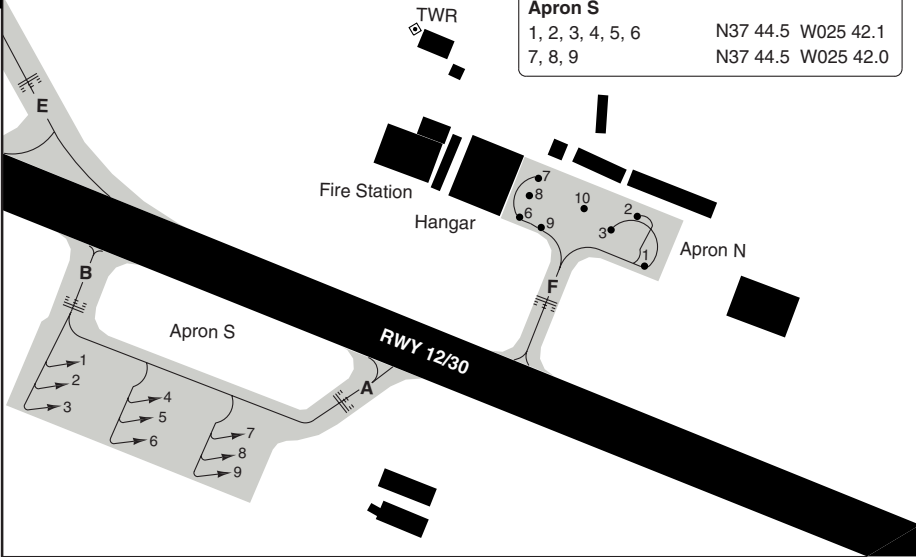
Joao Paulo II PONTA DELGADA

10 - 2

Ponta Delgada TWR
118.3

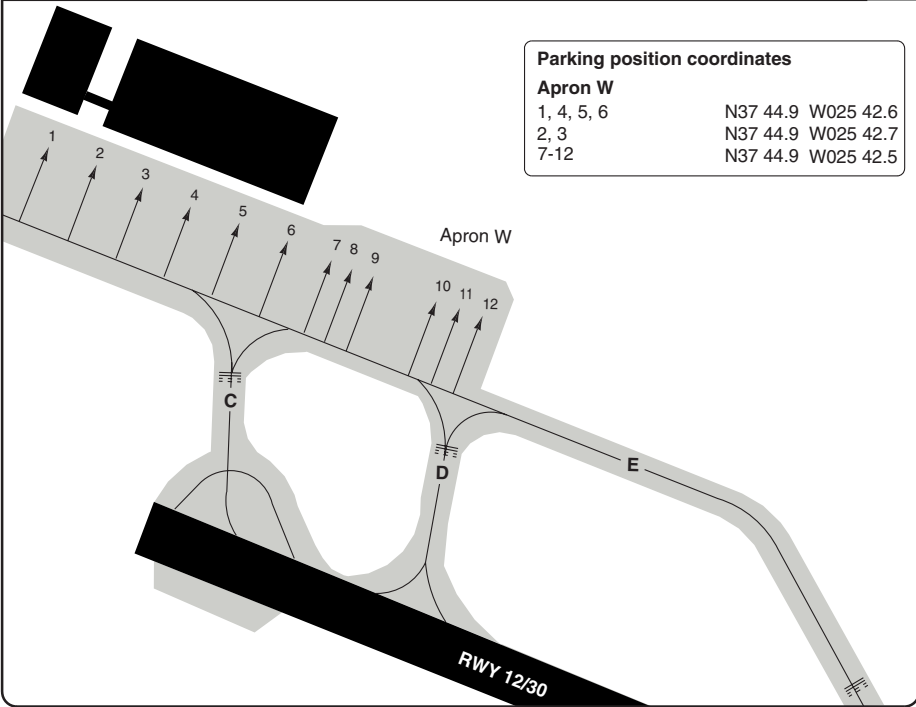
Parking position coordinates

Apron N	
1, 2, 3, 7, 9, 10	N37 44.6 W025 41.8
6, 8	N37 44.6 W025 41.9
Apron S	
1, 2, 3, 4, 5, 6	N37 44.5 W025 42.1
7, 8, 9	N37 44.5 W025 42.0



Parking position coordinates

Apron W	
1, 4, 5, 6	N37 44.9 W025 42.6
2, 3	N37 44.9 W025 42.7
7-12	N37 44.9 W025 42.5



© Navitech - lppd02laorg0

Change: New spec.

GENERAL

Joao Paulo II PONTA DELGADA

GENERAL

1. **WARNING**

- 1.1 High concentration of birds in the airport area.
- 1.2 High terrain NW of AD, especially on RWY 30 extended CL. Use special caution on visual APCH RWY 12 and TKOF RWY 30.

3. **TAXI**

ACFT with MTOW exceeding 80t to make turnovers on the bays of RWY 12/30.

4. **PUSH BACK, START-UP**

- 4.1 ACFT leaving nose-in position must be pushed back to breakaway area and ACFT must be facing to the East. Reverse thrust prohibited.
- 4.2 During push back ENG start up is allowed in nose in stands.
- 4.3 If APU U/S one ENG start up is permitted in nose in stand before push back, contact Ponta Delgada TWR for permission. Start up procedure will be assisted by Follow me car.

10 - 3

Change: New chart.

WEF 25 AUG 11

30 - 1 | 27 JUL 11

Portugal - LPPD / PDL

SID RWY 12 **RNAV** East

Joao Paulo II **PONTA DELGADA**

Ponta Delgada TWR 118.3	APP 119.4
-----------------------------------	---------------------

TA **6000** | AD Elev **259**

NOTE
Due to possible heavy turbulence conditions traffic should overfly VMG area above FL60 with prior ATC coordination.

Ponta Delgada
D114.5 VMG
N37 50.8
W025 45.5

Ponta Delgada
351 PD
N37 44.1
W025 40.5

2500

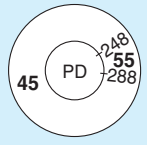
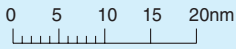
BEKUN 2Y
BEKU2Y

NAVPO
MNM **5500**
N37 37.3
W025 19.0

Santa Maria
D113.7 VSM
N36 57.8
W025 10.0

Santa Maria
LPAZ

30 - 1



© Navitech - lppd01daorg0

SID	Routeing	Altitudes
BEKUN 2Y	Climb on 121° - turn right on 128° from PD - at 2500 turn left - NAVPO - BEKUN.	NAVPO MNM 5500

Change: New spec.

THIS CHART IS A PART OF NAVIGRAPH NDAC AND IS INTENDED FOR FLIGHT SIMULATION USE ONLY

SID RWY 12 **RNAV** Northwest

Joao Paulo II **PONTA DELGADA**

Ponta Delgada TWR 118.3	APP 119.4
-----------------------------------	---------------------

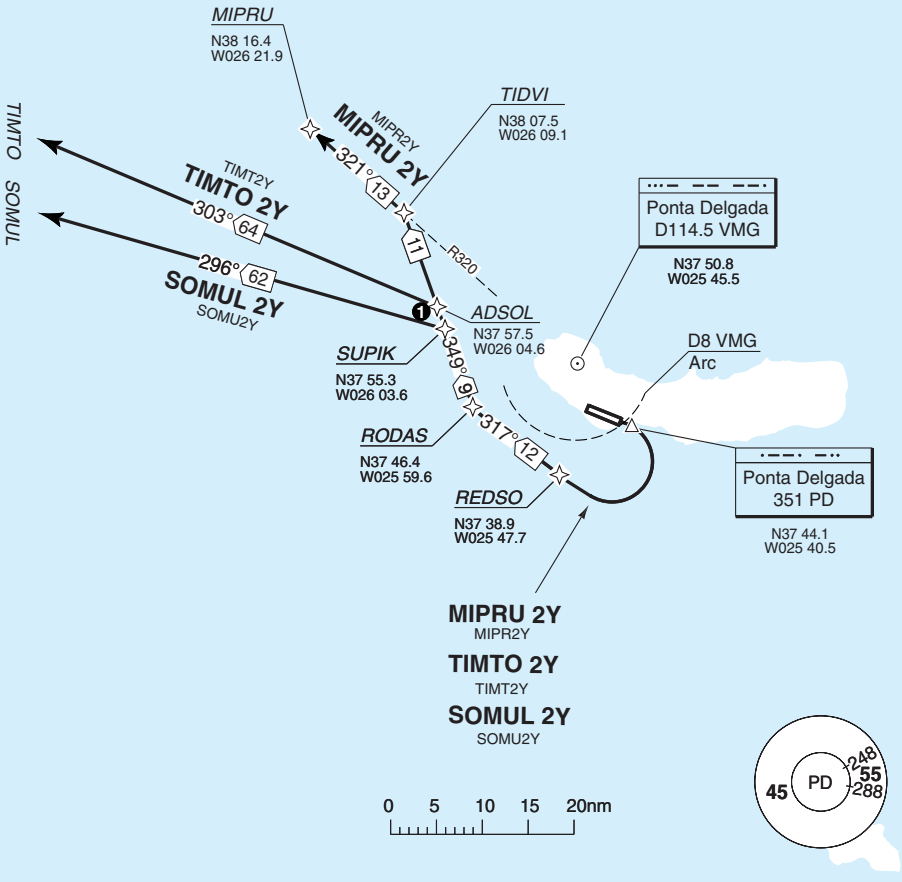
TA **6000** | AD Elev **259**

NOTE

Due to possible heavy turbulence conditions traffic should overfly VMG area above FL60 with prior ATC coordination.

1 DIST SUPIK - ADSOL : 2nm

30 - 2



SID	Routeing
MIPRU 2Y	Climb on 121° - PD - turn right - REDSO - RODAS - SUPIK - ADSOL - TIDVI - R320 VMG - MIPRU. (Remain beyond D8 VMG).
SOMUL 2Y	Climb on 121° - PD - turn right - REDSO - RODAS - SUPIK - intcp R296 VMG - SOMUL. (Remain beyond D8 VMG).
TIMTO 2Y	Climb on 121° - PD - turn right - REDSO - RODAS - SUPIK - ADSOL - R303 VMG - TIMTO. (Remain beyond D8 VMG).

© Navitech - lppd02daorg0

Change: New spec.

WEF 25 AUG 11

30 - 3 | 27 JUL 11

Portugal - LPPD / PDL

SID RWY 30 **RNAV** East

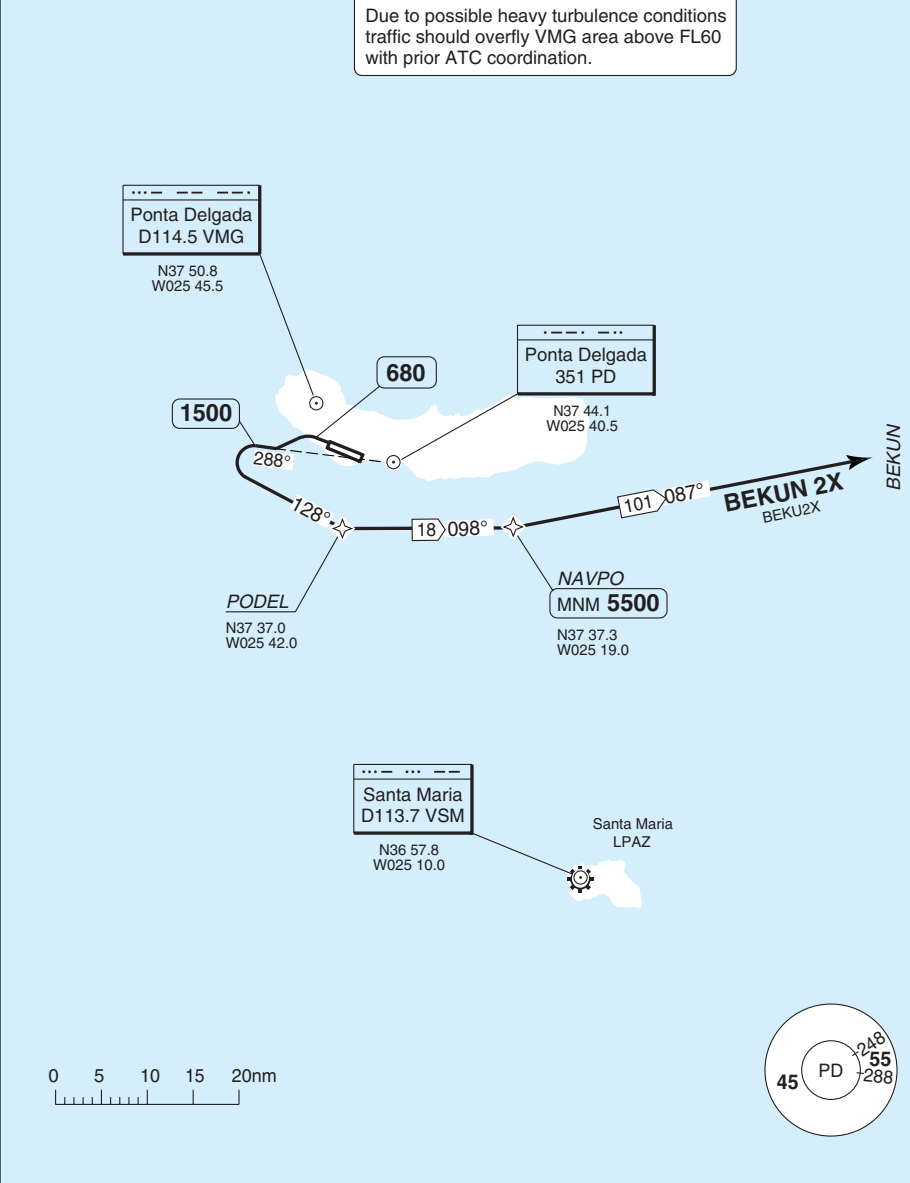
Joao Paulo II **PONTA DELGADA**

30 - 3

Ponta Delgada TWR 118.3	APP 119.4
----------------------------	--------------

TA 6000 | AD Elev 259

NOTE
Due to possible heavy turbulence conditions traffic should overfly VMG area above FL60 with prior ATC coordination.



SID	Routeing	Altitudes
BEKUN 2X	After TKOF turn left 286° - after passing 680 turn left - 288° from PD - at 1500 turn left - PODEL - NAVPO - BEKUN.	NAVPO MNM 5500

Change: New spec.

THIS CHART IS A PART OF NAVIGRAPH NDAC AND IS INTENDED FOR FLIGHT SIMULATION USE ONLY

© NavTech - lppd03daorg0

SID RWY 12 Northeast, East, South

Joao Paulo II PONTA DELGADA

Ponta Delgada TWR
118.3

APP
119.4

TA 6000 AD Elev 259

NOTE
Due to possible heavy turbulence conditions traffic should overfly VMG area above FL60 with prior ATC coordination.

BAVAS

BAVAS^{5V}
BAVAS 5V
063°

BEKU^{5V}
BEKUN 5V
095°

BEKUN

Ponta Delgada
D114.5 VMG
N37 50.8
W025 45.5

MNM 4500

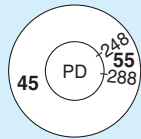
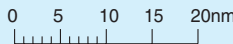
Ponta Delgada
351 PD
N37 44.1
W025 40.5

2500

VSM 5V
160/100°

Santa Maria
D113.7 VSM
N36 57.8
W025 10.0

Santa Maria
LPAZ



30 - 4

© Navitech - lppd04daorg0

SID	Routeing	Altitudes
BAVAS 5V	Climb on 121° - 128° from PD - at 2500 turn right - PD - 027° - intcp R063 VMG - BAVAS.	PD MNM 4500
BEKUN 5V	Climb on 121° - 128° from PD - at 2500 turn right - PD - 027° - intcp R095 VMG - BEKUN.	PD MNM 4500
VSM 5V	Climb on 121° - after PD turn right - intcp R160 VMG - VSM.	

Change: New spec.

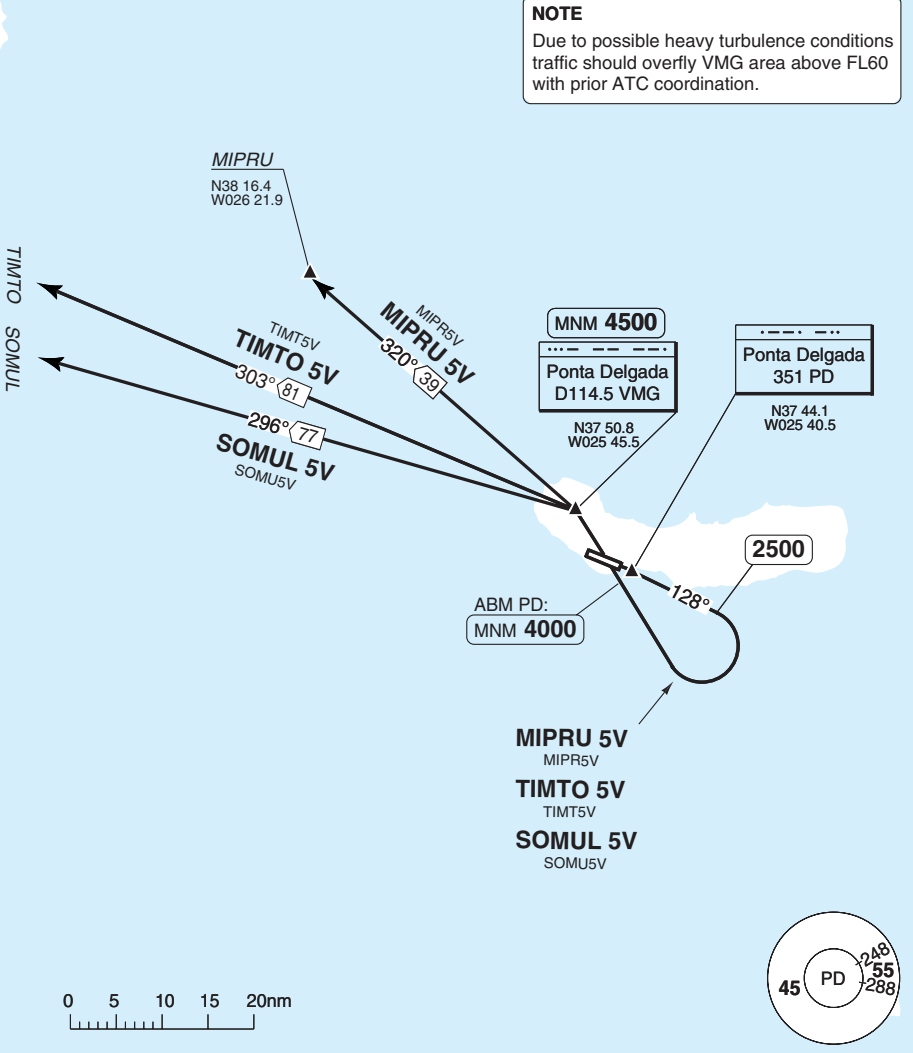
SID RWY 12 Northwest

Joao Paulo II PONTA DELGADA

Ponta Delgada TWR 118.3	APP 119.4
-----------------------------------	---------------------

TA **6000** AD Elev **259**

NOTE
Due to possible heavy turbulence conditions traffic should overfly VMG area above FL60 with prior ATC coordination.



SID	Routing	Altitudes
(INITIAL CLIMB)	Climb on 121° - 128° from PD - at 2500 turn right - VMG	
MIPRU 5V	R320 VMG - MIPRU.	ABM PD MNM 4000 VMG MNM 4500
SOMUL 5V	R296 VMG - SOMUL.	ABM PD MNM 4000 VMG MNM 4500
TIMTO 5V	R303 VMG - TIMTO.	ABM PD MNM 4000 VMG MNM 4500

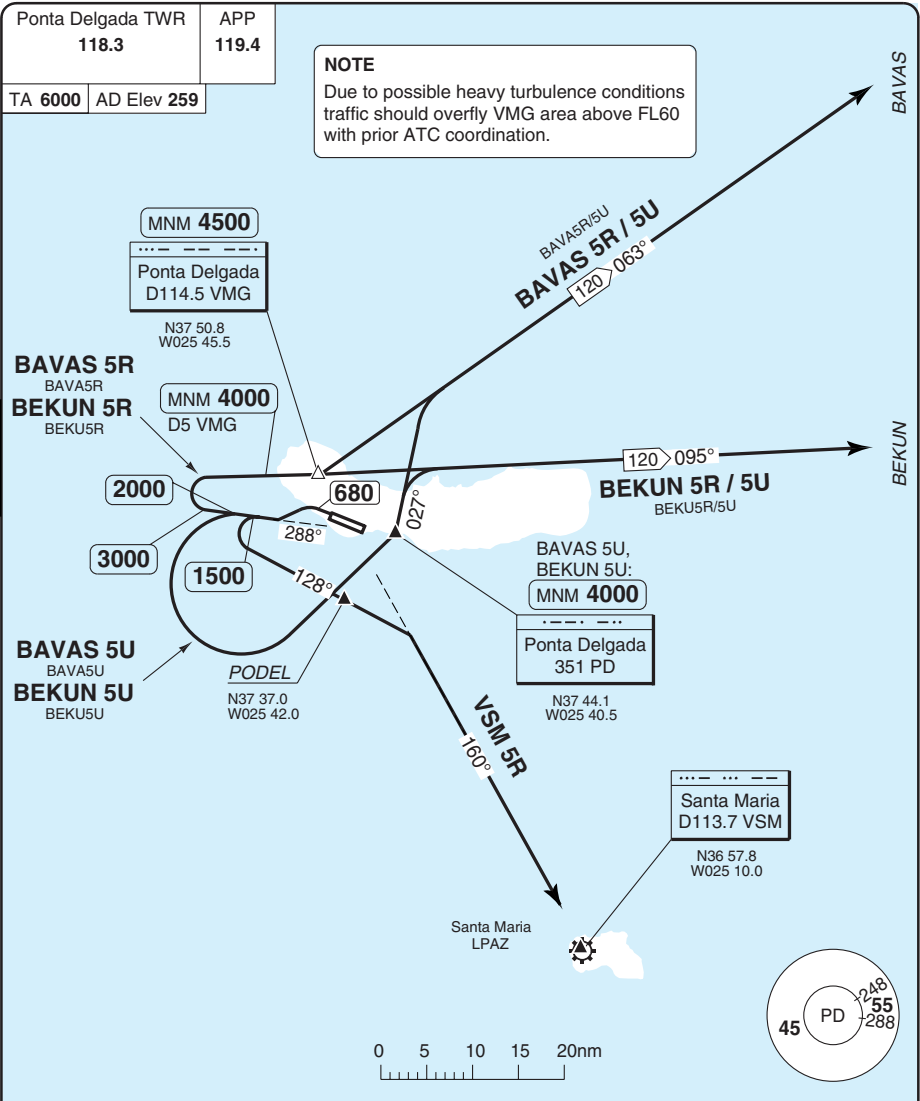
© Navitech - lppd05daorg0

Change: New spec.

THIS CHART IS A PART OF NAVIGRAPH NDAC AND IS INTENDED FOR FLIGHT SIMULATION USE ONLY

SID RWY 30 Northeast, East, South

Joao Paulo II PONTA DELGADA



NOTE
 Due to possible heavy turbulence conditions traffic should overfly VMG area above FL60 with prior ATC coordination.

SID	Routeing	Altitudes
BAVAS 5R	After TKOF turn left 289° - after passing 680 turn left - 288° from PD - at 3000 turn right to VMG - R063 VMG - BAVAS.	D5 before VMG MNM 4000 VMG MNM 4500
BAVAS 5U	After TKOF turn left 289° - after passing 680 turn left - 288° from PD - at 2000 turn left - PD - 027° - intcp R063 VMG - BAVAS.	PD MNM 4000
BEKUN 5R	After TKOF turn left 289° - after passing 680 turn left - 288° from PD - at 3000 turn right - VMG - R095 VMG - BEKUN.	D5 before VMG MNM 4000 VMG MNM 4500
BEKUN 5U	After TKOF turn left 289° - after passing 680 turn left - 288° from PD - at 2000 turn left - PD - 027° - intcp R095 VMG - BEKUN.	PD MNM 4000
VSM 5R	After TKOF turn left 289° - after passing 680 turn left - 288° from PD - at 1500 turn left on 128° - intcp R160 VMG - VSM.	

© NavTech - lppd06daorg0

Change: New spec.

THIS CHART IS A PART OF NAVIGRAPH NDAC AND IS INTENDED FOR FLIGHT SIMULATION USE ONLY

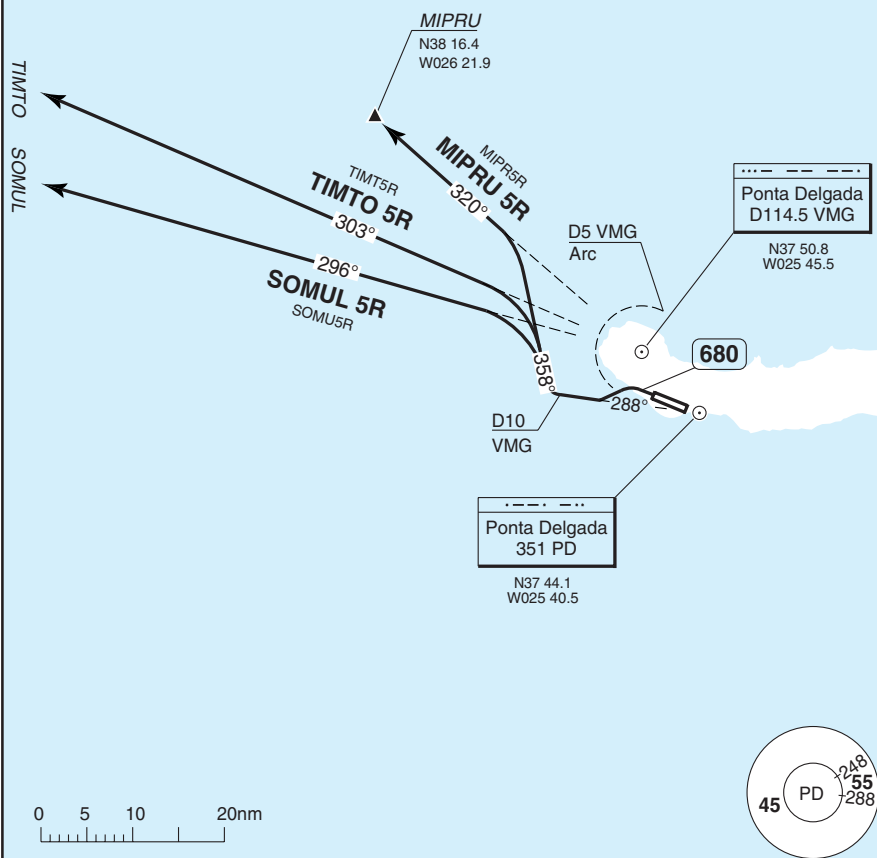
SID RWY 30 Northwest

Joao Paulo II PONTA DELGADA

Ponta Delgada TWR 118.3	APP 119.4
----------------------------	--------------

TA 6000 AD Elev 259

NOTE
Due to possible heavy turbulence conditions traffic should overfly VMG area above FL60 with prior ATC coordination.



30 - 7

© Navitech - lppd07daorg0

SID	Routeing
MIPRU 5R	After TKOF turn left 289° - after passing 680 turn left - intcp 288° from PD - at D10 VMG turn right - 358° (remain beyond D5 VMG) - intcp R320 VMG - MIPRU.
TIMTO 5R	After TKOF turn left 289° - after passing 680 turn left - intcp 288° from PD - at D10 VMG turn right - 358° (remain beyond D5 VMG) - intcp R303 VMG - TIMTO.
SOMUL 5R	After TKOF turn left 289° - after passing 680 turn left - intcp 288° from PD - at D10 VMG turn right - 358° (remain beyond D5 VMG) - intcp R296 VMG - SOMUL.

Change: New spec.

Porta Delgada APP 119.4	TWR 118.3
----------------------------	--------------

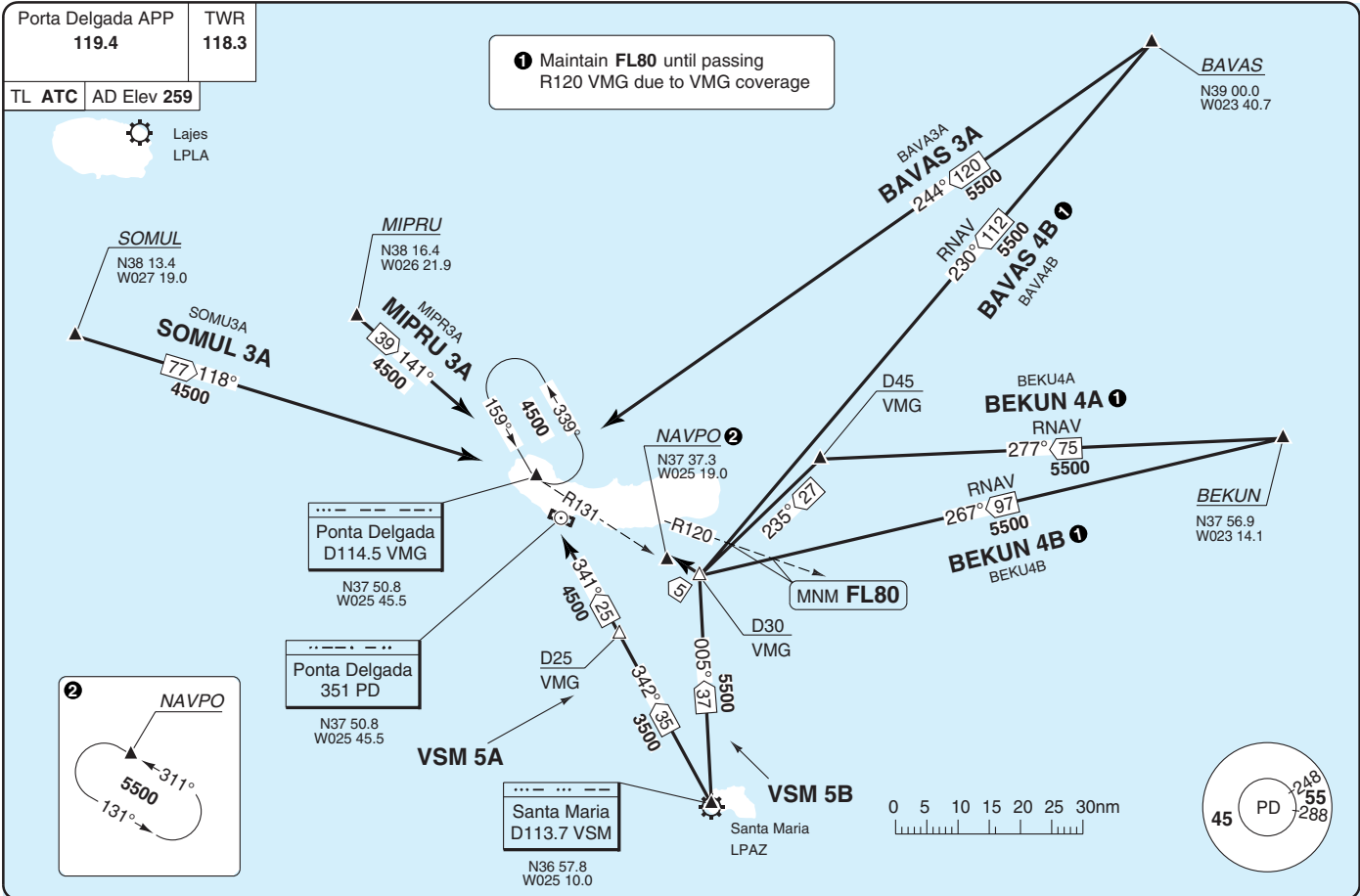
TL ATC AD Elev 259



1 Maintain FL80 until passing R120 VMG due to VMG coverage

THIS CHART IS A PART OF NAVIGRAPH NDAC AND IS INTENDED FOR FLIGHT SIMULATION USE ONLY

Change: New spec.



STAR RWY 12/30

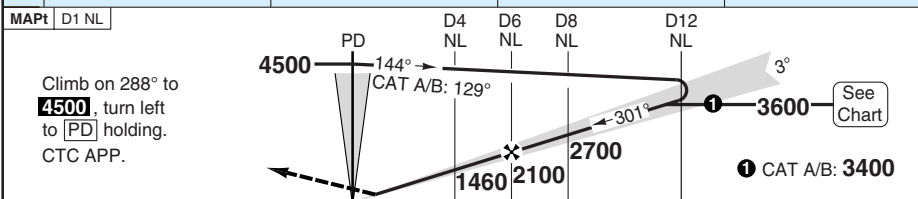
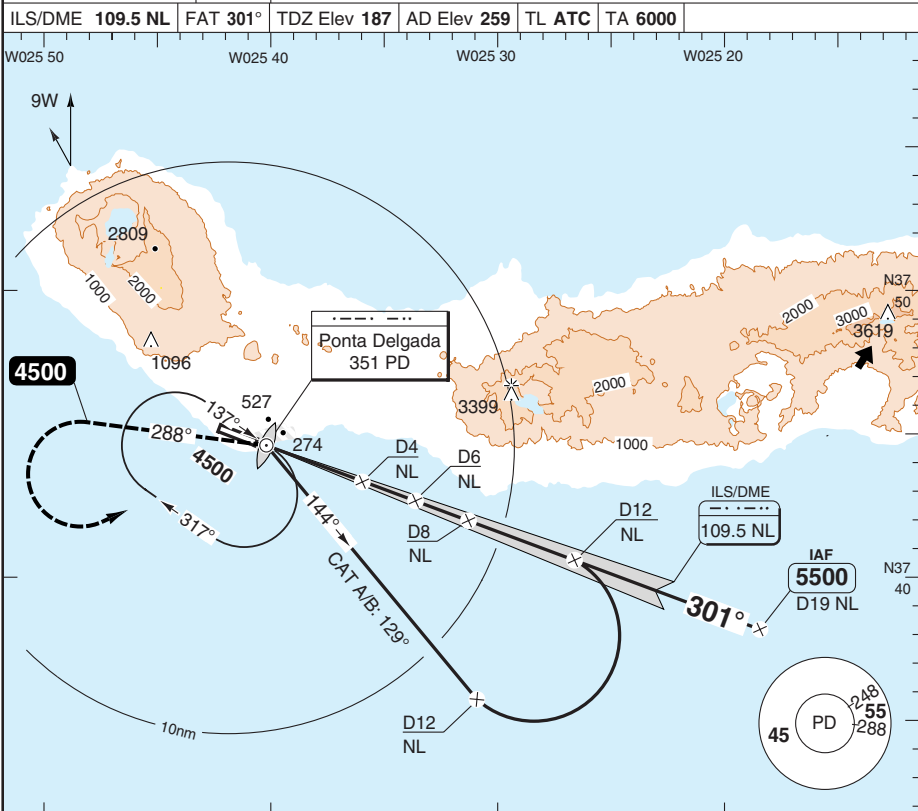
40 - 1 | 27 JUL 11

Portugal - LPPD / PDL
Joao Paulo II PONTA DELGADA

ILS RWY 30

Joao Paulo II PONTA DELGADA

Ponta Delgada APP 119.4	TWR 118.3				
ILS/DME 109.5 NL	FAT 301°	TDZ Elev 187	AD Elev 259	TL ATC	TA 6000



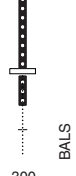
TCH 50

ACFT	ILS+DME	LOC+DME	Circling a
A	410 (221) 1000m	540 (350) 1400m	660 (401) 1.5km
B	420 (231) 1000m		760 (510) 1.6km
C	430 (241) 1000m		860 (600) 2.4km
D	440 (251) 1100m		960 (700) 3.6km

a South of RWY 30

DME NL	3.0° ALT
8	2700
7	2400
6	2100
5	1780
4	1460
3	1150
2	830

LDA 2279x45
7477x147ft
P 3°L/R (68)



GS	80	100	120	140	160
ROD 3.0°	430	530	630	740	840

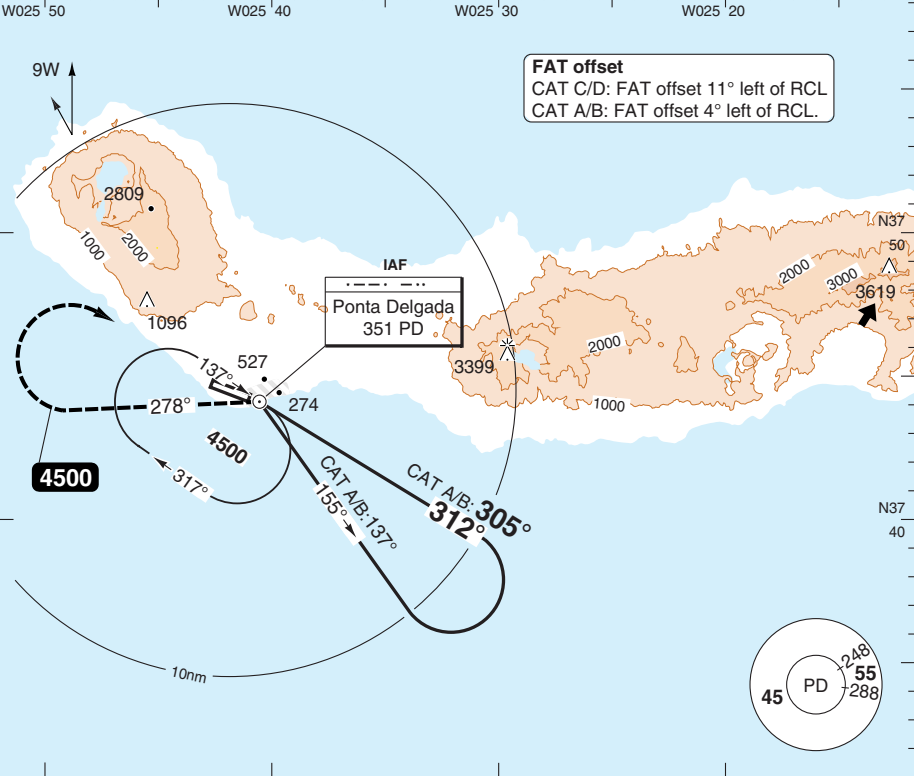
Change: New spec.

NDB RWY 30

Joao Paulo II PONTA DELGADA

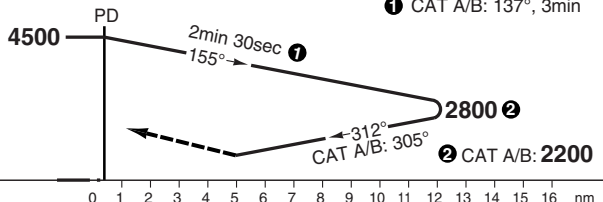
Ponta Delgada APP 119.4	TWR 118.3
----------------------------	--------------

NDB 351 PD	FAT 312°	TDZ Elev 187	AD Elev 259	TL ATC	TA 6000
------------	----------	--------------	-------------	--------	---------



MAPt	PD
------	----

Climb on 278°, at **4500**, turn right to [PD] holding. CTC APP.



ACFT	NDB	NDB ^a	Circling	Circling ^a
A	700 (520) 1500m	700 (520) 2300m	700 (441) 1.5km	780 (520) 2.3km
B	720 (540) 1500m	720 (540) 2400m	760 (510) 1.6km	800 (540) 2.4km
C	760 (580) 2400m	760 (580) 2800m	860 (600) 2.4km	860 (600) 2.8km
D			960 (700) 3.6km	960 (700) 3.6km

^a Non CDFA

Note: Circling south of RWY 30.

LDA 2279x45
7477x147ft
P 3°L/R (68)

