

Airport information:

Country: Portugal

City: HORTA

Coordinates: N 38° 31.2', W 028° 43.0'

Elevation: 118

Customs: Customs O/R 24HRS

Fuel: Jet A1

RFF: CAT 6

hours: HO

Runways:

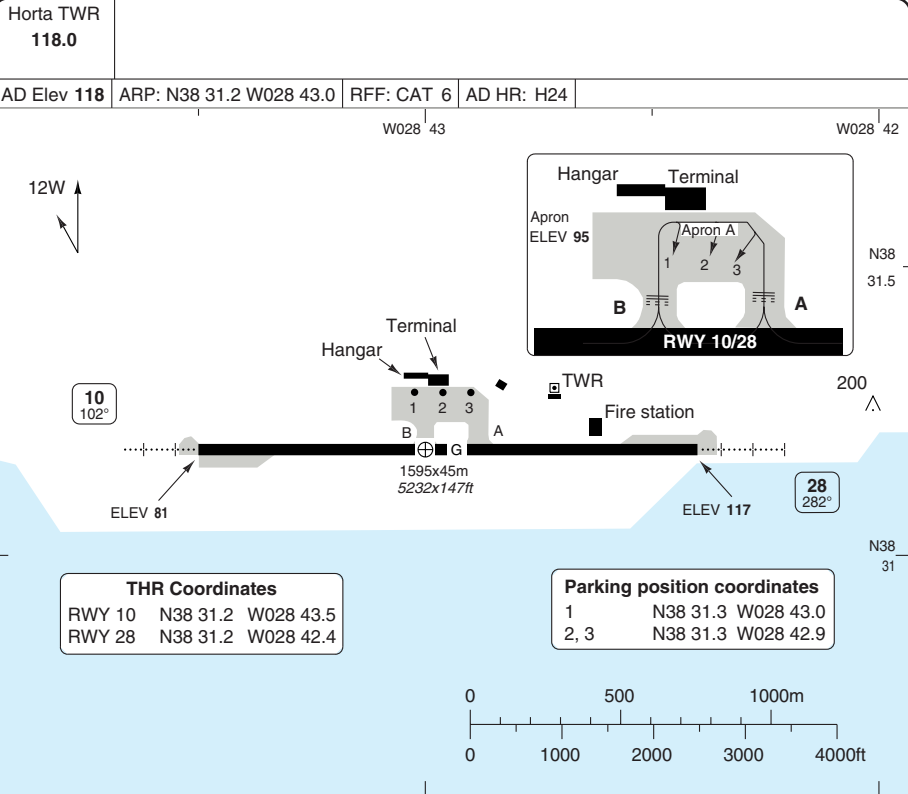
Runway 10

Takeoff length: 1700, Landing length: 1600

Runway 28

Takeoff length: 1700, Landing length: 1600

AERODROME



RWY	Slope	TORA m/ft	LDA m/ft	ALS	REDL	Additional
10	+0.7	1647 / 5403 ①	1595 / 5232	H-E ②	H	P 3° (48)
28	-0.7	1647 / 5403 ①	1595 / 5232	H-E ③	H	P 3° (48)

① Including 52.5m of pavement before THR. ② 202m. ③ 244m.

EU OPS		TAKE OFF MINIMA	
RWY	Facilities	RVR	A B C
10/28	RCL (day only) or RCL + REDL NIL (day only)		400m 500m

GENERAL INFORMATION

1. WARNING

- 1.1 Ground rises rapidly very close to AD. It may generate windshear and/or turbulence.
- 1.2 Back-track OPS forbidden to ACFT with TKOF weight above 40 tons on RWY 10/28. These OPS must be done only on turning bays of each RWY.
- 1.3 Due to high terrain flights are not permitted N of RWY 10/28.
- 1.4 A very high mountain on the EAST sector of the AERODROME.

- 1.5 Watch out for birds.
- 1.6 RESA does not comply with ICAO Annex 14.

2. NOISE ABATEMENT PROCEDURE

- 2.1 ACFT authorised to land during the period between 0000 to 0600 LT are strictly forbidden to reverse thrust.

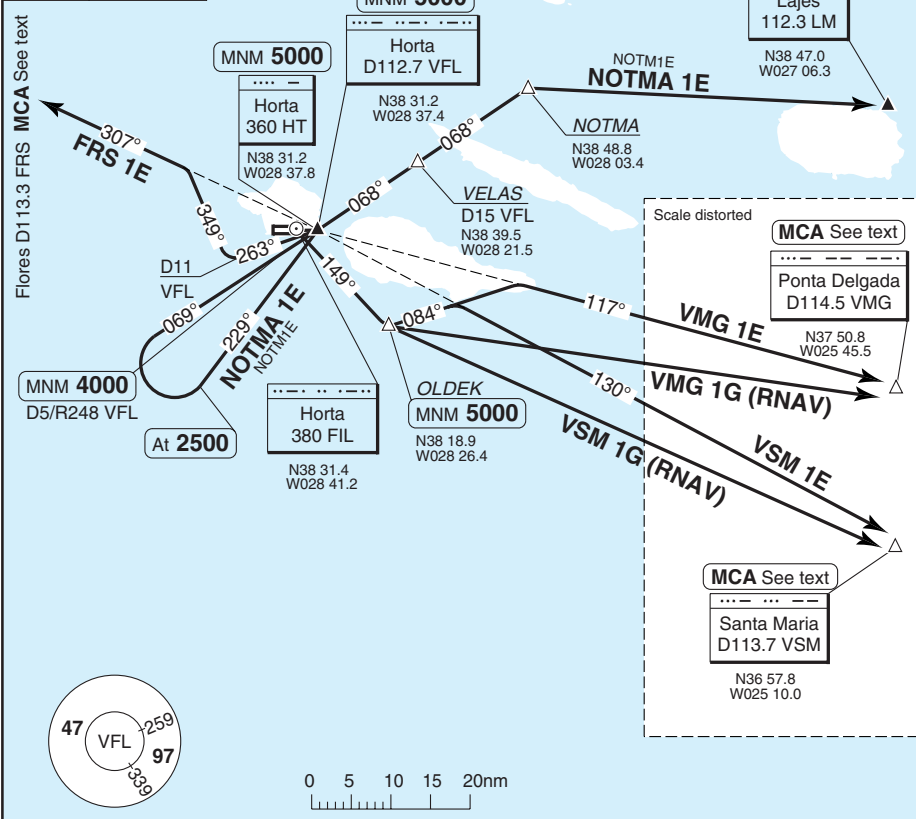
Change: New spec.

THIS CHART IS A PART OF NAVIGRAPH NDAC AND IS INTENDED FOR FLIGHT SIMULATION USE ONLY

SID RWY 10

Horta TWR 118.0	APP 120.6
TA 5000	AD Elev 118

Strict compliance with SID required



30 - 1

NOTE: (Except FRS 1E, NOTMA 1E) Do not overshoot 149° from FIL (or R157 VFL) to the east before OLDEK.

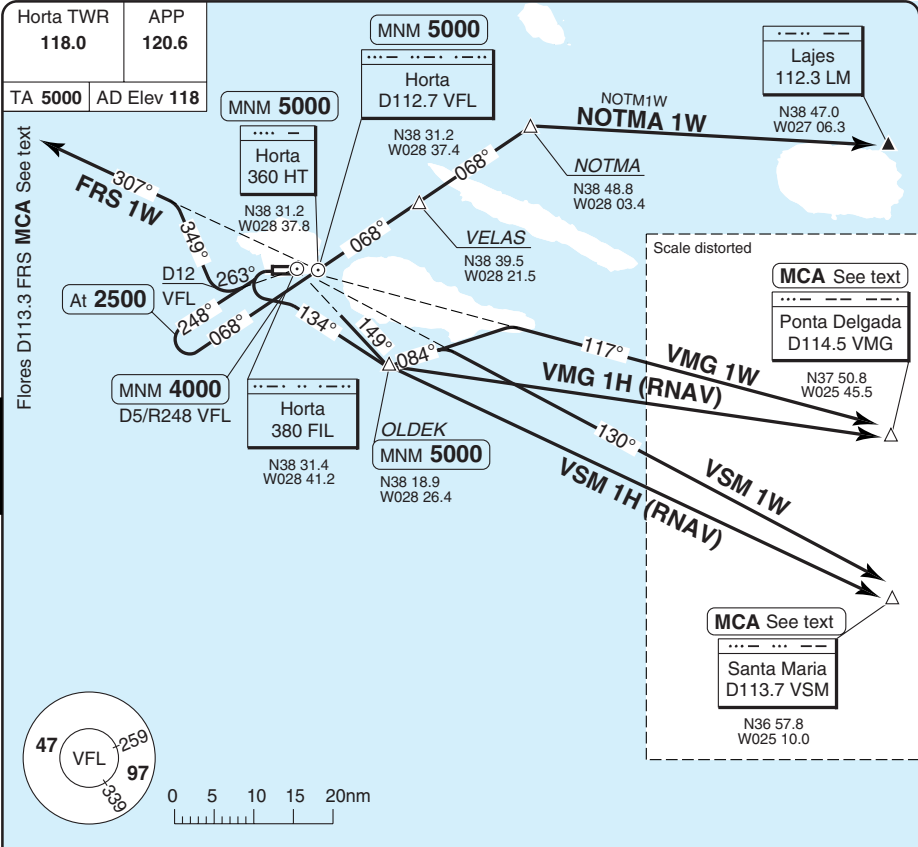
SID	Routing	Altitudes
FRS 1E	Turn right to intcp 263° from HT - at D11 VFL turn right - 349° - intcp R307 VFL - FRS.	FRS via R307 VFL MNM FL100 FRS via 307° from FIL MAX FL100
NOTMA 1E	Turn right to intcp 229° from HT - at 2500 turn right - 069° to HT (R248 VFL) - NOTMA - LM.	D5/R248 VFL MNM 4000 HT/VFL MNM 5000
VMG 1E	Turn right to intcp 149° from FIL - OLDEK - turn left - 084° - intcp R117 from VFL - VMG.	OLDEK MNM 5000 VMG via R117 VFL MNM FL100 VMG via 117° from FIL MAX FL100
VMG 1G (RNAV only)	Turn right to intcp 149° from FIL - OLDEK - turn left - VMG.	OLDEK MNM 5000
VSM 1E	Turn right to intcp 149° from FIL - OLDEK - turn left - 084° - intcp R130 from VFL - VSM.	OLDEK MNM 5000 VSM via R130 VFL MNM FL100 VSM via 130° from FIL MAX FL100
VSM 1G (RNAV only)	Turn right to intcp 149° from FIL - OLDEK - turn left - VSM.	OLDEK MNM 5000

© Navitech - iphr01daorgo

Change: New spec.

THIS CHART IS A PART OF NAVIGRAPH NDAC AND IS INTENDED FOR FLIGHT SIMULATION USE ONLY

SID RWY 28



MNM CLIMB GRADIENT: 6.2% until passing 550.

NOTE: (Except FRS 1W, NOTMA 1W) Do not overshoot 149° from FIL (or R157 VFL) to the east before OLDEK.

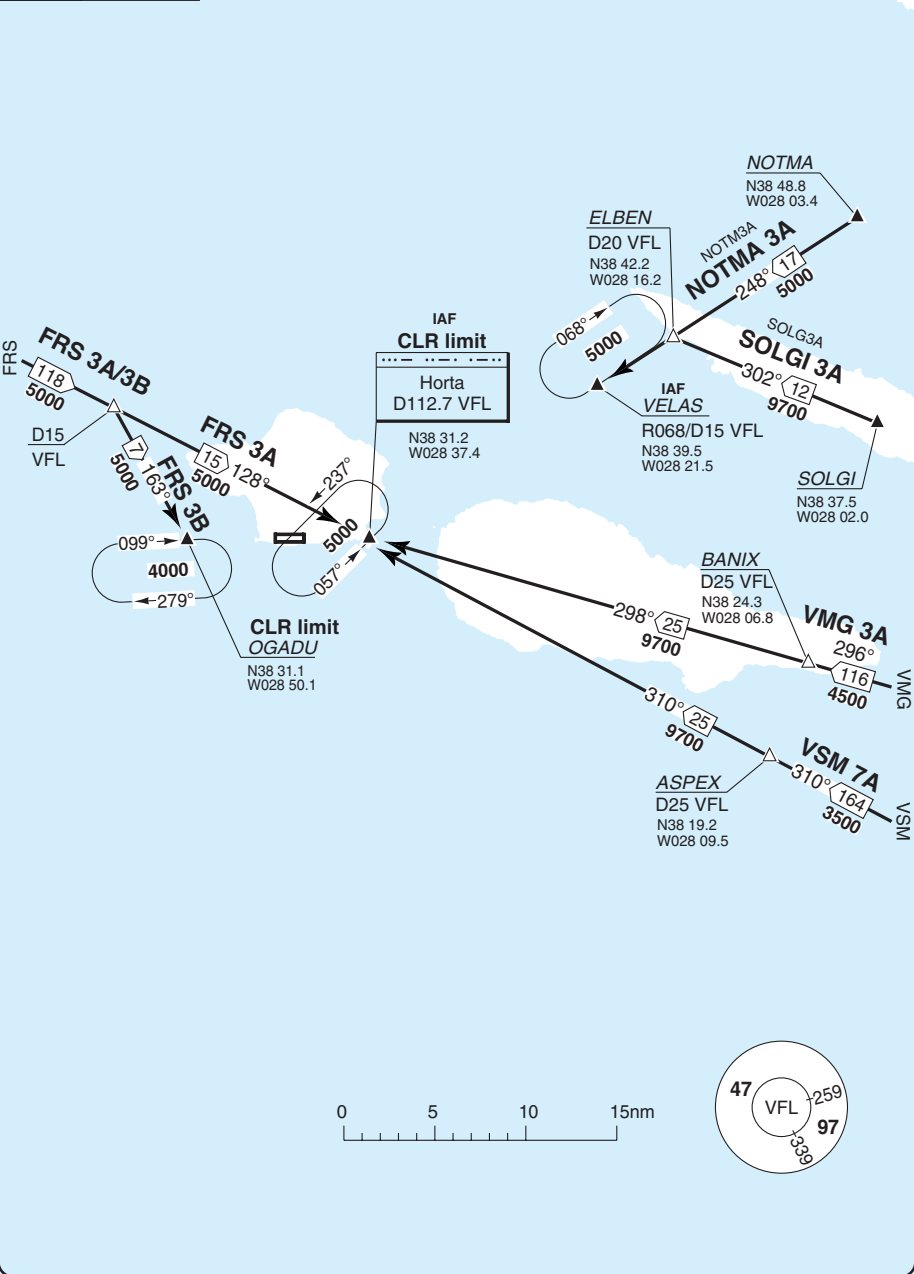
SID	Routeing	Altitudes
(INITIAL CLIMB)	After TKOF turn left (Bank 15°) - climb to 790 - follow SID.	
FRS 1W	Intcp 263° from FIL - at D12 VFL turn right - 349° - R307 VFL/307° from FIL - FRS.	FRS via R307 VFL MNM FL100 FRS via 307° from FIL MAX FL100
NOTMA 1W	Turn left - 248° - at 2500 turn left - 068° to HT/R248 VFL - R068 VFL - VELAS - NOTMA - LM.	D5/R248 VFL MNM 4000 HT/VFL MNM 5000
VMG 1W	Turn left - 134° - intcp 149° from FIL - at OLDEK turn left - 084° - R117 VFL/117° from FIL - VMG.	OLDEK MNM 5000 VMG via R117 VFL MNM FL100 VMG via 117° from FIL MAX FL100
VMG 1H (RNAV only)	Turn left - 134° - intcp 149° from FIL - at OLDEK turn left - VMG.	OLDEK MNM 5000
VSM 1W	Turn left - 134° - intcp 149° from FIL - at OLDEK turn left - 084° - R130 VFL/130° from FIL - VSM.	OLDEK MNM 5000 VSM via R130 VFL MNM FL100 VSM via 130° from FIL MAX FL100
VSM 1H (RNAV only)	Turn left - 134° - intcp 149° from FIL - at OLDEK turn left - VSM.	OLDEK MNM 5000

Change: New spec.

THIS CHART IS A PART OF NAVIGRAPH NDAC AND IS INTENDED FOR FLIGHT SIMULATION USE ONLY

STAR

Horta APP 120.6	TWR 118.0
TL ATC	AD Elev 118



40 - 1

Change: New spec.

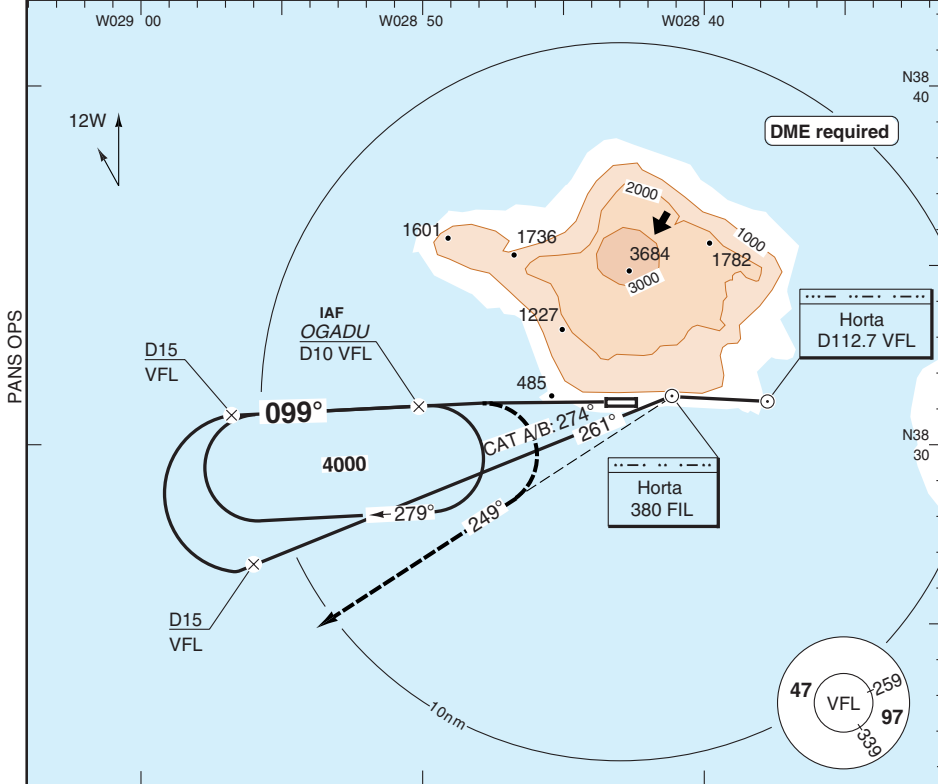
THIS CHART IS A PART OF NAVIGRAPH NDAC AND IS INTENDED FOR FLIGHT SIMULATION USE ONLY

NDB RWY 10

HORTA

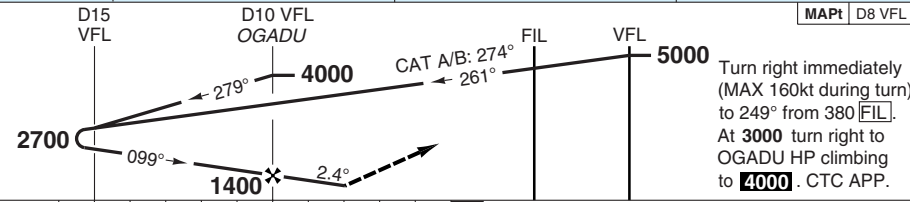
Horta APP 120.6	TWR 118.0
---------------------------	---------------------

NDB 380 FIL	FAT 099°	THR Elev 81	AD Elev 118	TL ATC	TA 5000
--------------------	-----------------	--------------------	--------------------	---------------	----------------



PANS OPS

50 - 1



ACFT	NDB+DME	Circling a
A	800 (719) 1500m	840 (719) 1.5km
B		840 (719) 1.6km
C	990 (910) 4300m	1030 (910) 4.3km
D	NA	NA

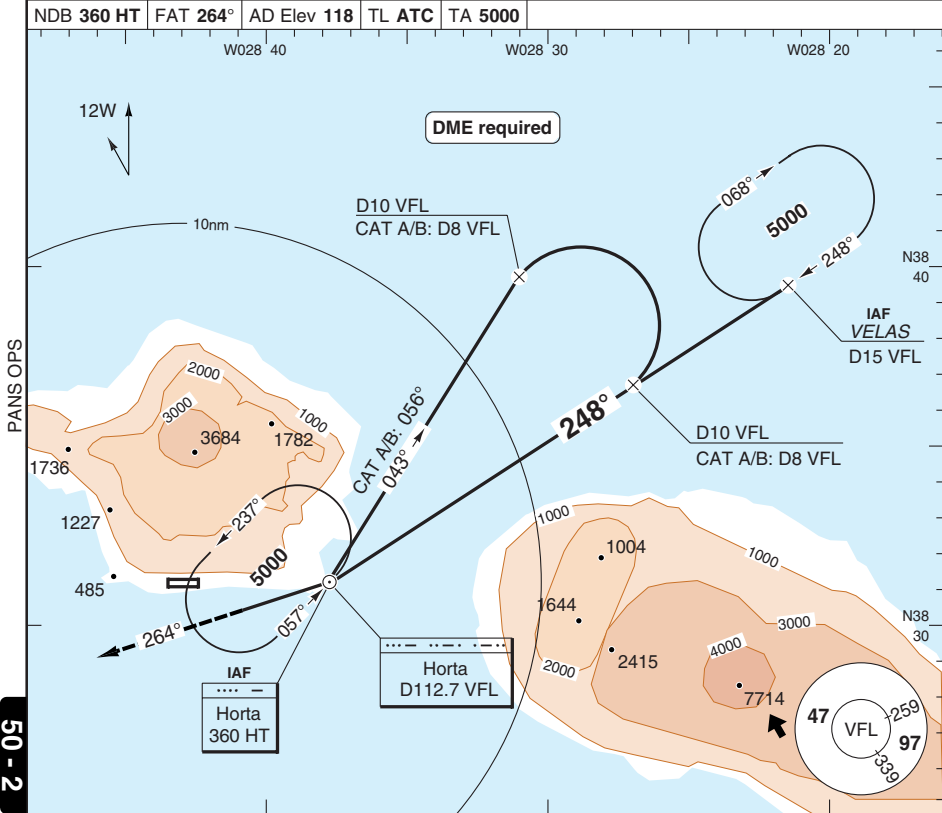
a South of RWY

DME VFL	3.0° ALT	LDA 1595x45 5232x147ft P3° (48)
12.8	2700	
11	2120	
10	1800	
9	1480	
MAPt	1160	
7.5	990	BALS

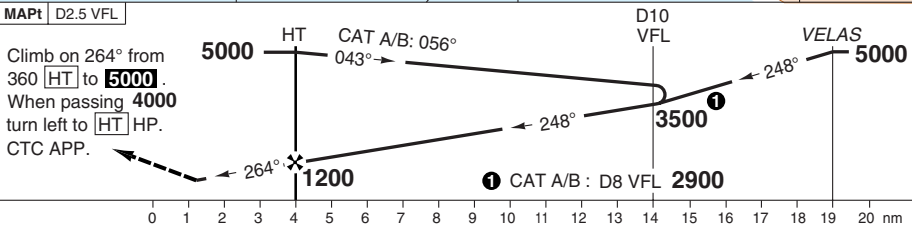
GS	80	100	120	140	160
ROD 3.0°	430	540	640	750	860

NDB A CIRCLING

Horta APP 120.6	TWR 118.0				
NDB 360 HT	FAT 264°	AD Elev 118	TL ATC	TA 5000	



50 - 2



ACFT	NDB+DME Circling a	a South of RWY 10/28
A	680 (562) 1.5km	
B	680 (562) 1.6km	
C	880 (762) 2.4km	
D	NA	

© Navtech - lphr02iaip00
EU OPS

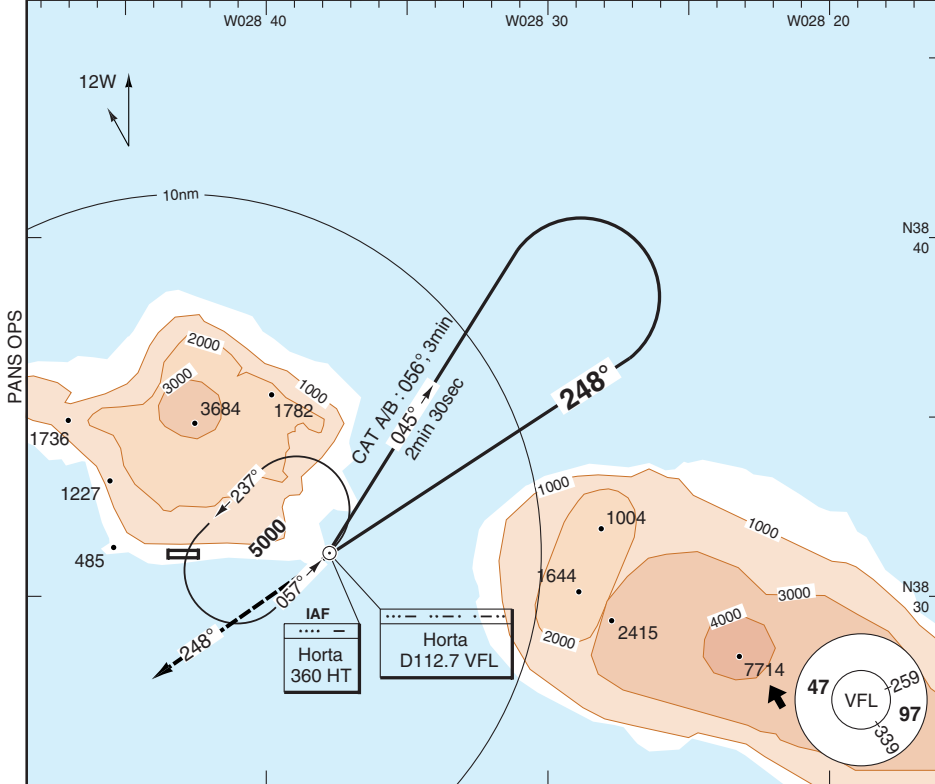
Change: New spec.

THIS CHART IS A PART OF NAVIGRAPH NDAC AND IS INTENDED FOR FLIGHT SIMULATION USE ONLY

NDB B CIRCLING

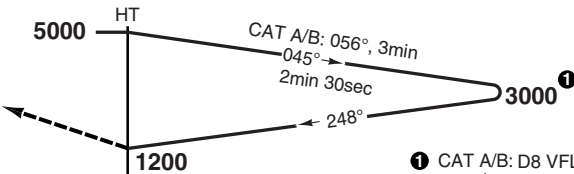
Horta APP 120.6	TWR 118.0
---------------------------	---------------------

NDB 360 HT	FAT 248°	AD Elev 118	TL ATC	TA 5000
-------------------	-----------------	--------------------	---------------	----------------

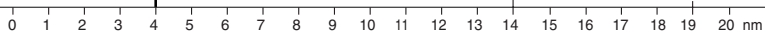


MAPt	HT
------	----

Climb on 248° to **5000**, turn right to **HT** HP. CTC APP.



1 CAT A/B: D8 VFL **2600**



ACFT **Circling a** **a** South of RWY

A	1200 (1082) 1.5km
B	1200 (1082) 1.6km
C	1200 (1082) 2.4km
D	NA

JAR-OPS Landing Minima

HORTA

The following Minima is for Public Transport aircraft and conforms to JAR-OPS1 regulations.

STRAIGHT-IN APPROACH		C				D			
R/W	Procedure	DA/ MDA QNH ft	DH/ MDH QFE ft	RVR m	RVR No ALS m	DA/ MDA QNH ft	DH/ MDH QFE ft	RVR m	RVR No ALS m
10	NDB/DME	1000	910	2000	2000	N/A	N/A	N/A	N/A

Notes:

CIRCLING		C			D		
R/W	Procedure	MDA QNH ft	MDH QFE ft	Vis m	MDA QNH ft	MDH QFE ft	Vis m
	CIRC NDB/DME a (1)	880	770	2400	N/A	N/A	N/A
	CIRC NDB b (1)	1200	1090	2400	N/A	N/A	N/A
	10 NDB/DME (1)	990	880	2400	N/A	N/A	N/A

Notes:

(1) South of RWY 10/28 only.

TAKE-OFF		C		D	
Runway	Facilities	RVR	Vis	RVR	Vis
10/28	REDL and/or RCL	400	-	N/A	N/A
10/28	Nil (Day only)	500	-	N/A	N/A

Notes:

JAR-OPS Landing Minima

HORTA

The following Minima is for Public Transport aircraft and conforms to JAR-OPS1 regulations.

STRAIGHT-IN APPROACH		A				B			
R/W	Procedure	DA/ MDA QNH ft	DH/ MDH QFE ft	RVR m	RVR No ALS m	DA/ MDA QNH ft	DH/ MDH QFE ft	RVR m	RVR No ALS m
10	NDB/DME	800	720	1500	1500	800	720	1500	1500

Notes:

CIRCLING		A			B		
R/W	Procedure	MDA QNH ft	MDH QFE ft	Vis m	MDA QNH ft	MDH QFE ft	Vis m
	CIRC NDB/DME a (1)	680	570	1500	680	570	1600
	CIRC NDB b (1)	1200	1090	1500	1200	1090	1600
	10 NDB/DME (1)	800	690	1500	800	690	1600

Notes:

(1) South of RWY 10/28 only.

TAKE-OFF		A		B	
Runway	Facilities	RVR	Vis	RVR	Vis
10/28	REDL and/or RCL	400	-	400	-
10/28	Nil (Day only)	500	-	500	-

Notes: