

LPGR

Airport information:

Country: Portugal

City: GRACIOSA

Coordinates: N 39° 05.6', W 028° 01.7'

Elevation: 86

Customs: Nil

Fuel: Nil

RFF: CAT 5

hours: MON-FRI 0900-1200, 1400-1700LT, SAT & SUN Closed

Runways:

Runway 09

Takeoff length: 1325, Landing length: 1265

Runway 27

Takeoff length: 1325, Landing length: 1265

AERODROME

Graciosa INFO
122.9

Lajes APP
135.0

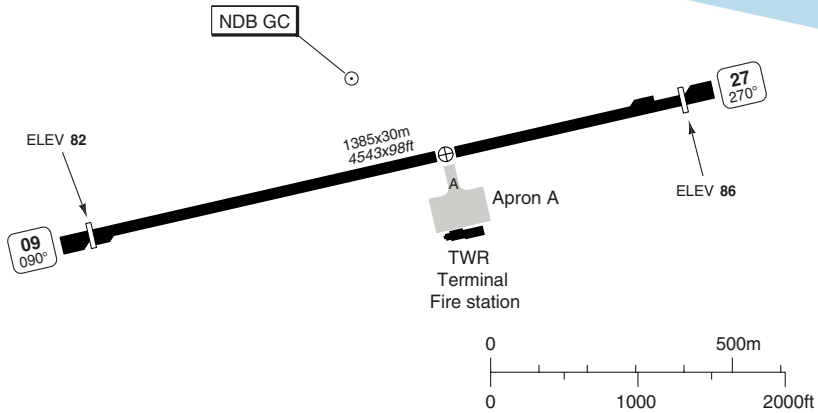
AD Elev **86** | ARP: N39 05.6 W028 01.7 | RFF: A5 | AD HR: HO

W028 02

N39
 06



THR Coordinates
 RWY 09 N39 05.5 W028 02.2
 RWY 27 N39 05.6 W028 01.4



RWY	Slope	TORA m/ft	LDA m/ft	ALS	REDL	Additional
09	0	1325 / 4347	1265 / 4150	-	-	P 3° (48)
27	0	1325 / 4347	1265 / 4150	-	-	P 3° (48)

EU OPS TAKE OFF MINIMA

RWY	Facilities	RVR
		A B
09/27	RCL (day only) or RCL + REDL	400m
	NIL (day only)	500m

GENERAL INFORMATION

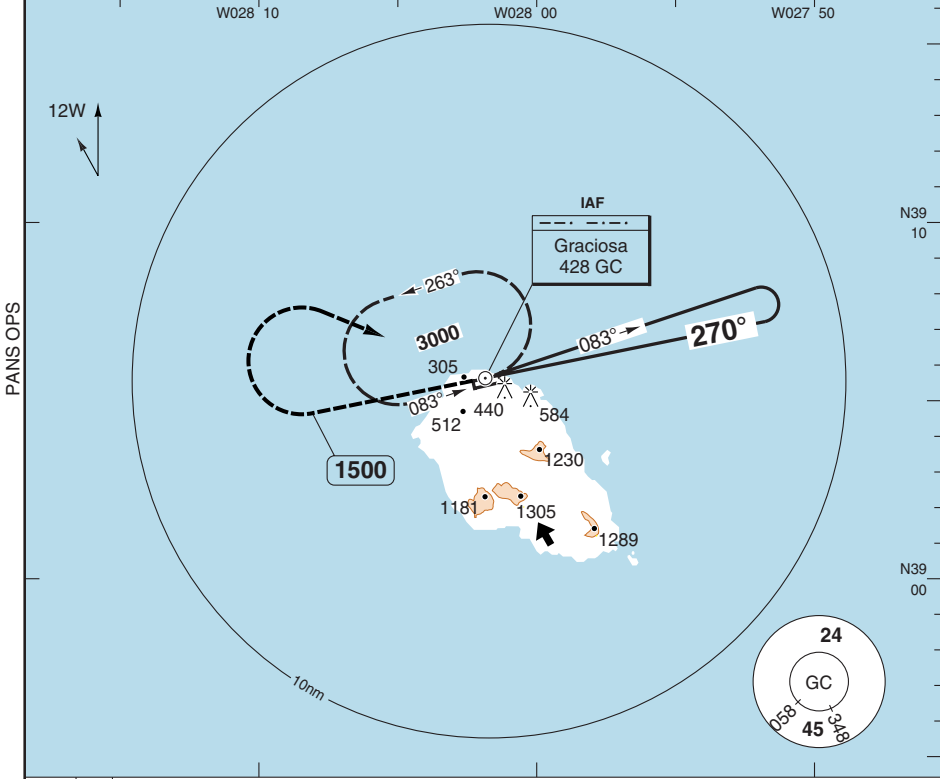
- AD RESTRICTIONS**
 - This is a NON-CONTROLLED AD.
 - VMC and daylight OPS only.
 - All authorizations must be obtained through Lajes APP.
 - Two way communication required.
 - Special caution on APP to RWY 09 is required.
 - Due to high terrain, flights are not permitted south of RWY.

- CIRCUITS**
Right hand RWY 27.
- WARNING**
Watch out for birds.
- DEPARTURES**
RWY 09/27:
Climb on RWY HDG until passing 1000ft, then turn right.
Keep to the left side of coastline.
Maintain VMC until ATC clearance received from Lajes APP.

NDB RWY 27

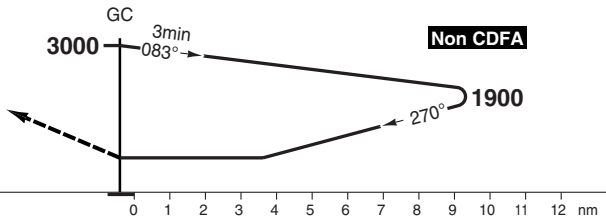
Lajes APP 135.0	Graciosa INFO 122.9
---------------------------	-------------------------------

NDB 428 GC	FAT 270°	THR Elev 86	AD Elev 86	TL ATC	TA 5000
-------------------	-----------------	--------------------	-------------------	---------------	----------------



MAPt GC

Climb on 270° to **1500**, then turn right climbing to **428 GC** to **3000**.



ACFT **NDB** **Circling a** **a** North of RWY 09/27

EU OPS	A	770 (690) 3400m	770 (690) 3.4km
	B		

LDA 1265x30
 4150x98ft
 P 3° (48)



NALS

Reverse side blank

JAR-OPS Landing Minima

GRACIOSA

The following Minima is for Public Transport aircraft and conforms to JAR-OPS1 regulations.

STRAIGHT-IN APPROACH		C				D			
R/W	Procedure	DA/ MDA QNH ft	DH/ MDH QFE ft	RVR m	RVR No ALS m	DA/ MDA QNH ft	DH/ MDH QFE ft	RVR m	RVR No ALS m
27	NDB	N/A	N/A	N/A	N/A	N/A	N/A	N/A	N/A

Notes:

CIRCLING		C			D		
R/W	Procedure	MDA QNH ft	MDH QFE ft	Vis m	MDA QNH ft	MDH QFE ft	Vis m
27	NDB (1)	N/A	N/A	N/A	N/A	N/A	N/A

Notes:

(1) North of RWY 09/27 only.

TAKE-OFF		C		D	
Runway	Facilities	RVR	Vis	RVR	Vis
09/27	Nil (Day only)	N/A	N/A	N/A	N/A

Notes:

JAR-OPS Landing Minima

GRACIOSA

The following Minima is for Public Transport aircraft and conforms to JAR-OPS1 regulations.

STRAIGHT-IN APPROACH		A				B			
R/W	Procedure	DA/ MDA QNH ft	DH/ MDH QFE ft	RVR m	RVR No ALS m	DA/ MDA QNH ft	DH/ MDH QFE ft	RVR m	RVR No ALS m
27	NDB	780	690	1500	N/A	780	690	1500	N/A

Notes:

CIRCLING		A			B		
R/W	Procedure	MDA QNH ft	MDH QFE ft	Vis m	MDA QNH ft	MDH QFE ft	Vis m
27	NDB (1)	780	690	1500	780	690	1600

Notes:

(1) North of RWY 09/27 only.

TAKE-OFF		A		B	
Runway	Facilities	RVR	Vis	RVR	Vis
09/27	Nil (Day only)	500	-	500	-

Notes: