

Airport information:

Country: Portugal

City: FLORES

Coordinates: N 39° 27.5', W 031° 07.9'

Elevation: 108

Customs:

Fuel:

RFF: CAT 4, CAT 5 or 6 O/R.

hours: HO

Runways:

Runway 18

Takeoff length: 1400, Landing length: 1340

Runway 36

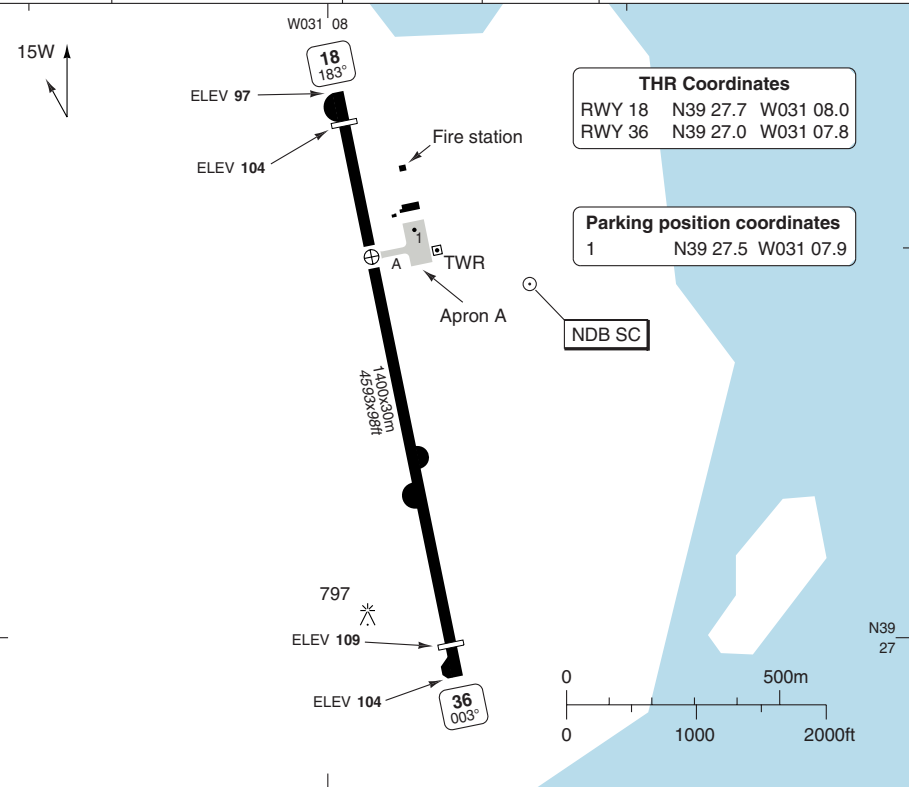
Takeoff length: 1400, Landing length: 1345

AERODROME

FLORES

Flores TWR **118.8** ① CAT 5 and 6 avbl by prior arrangements with Airport Director.

AD Elev **108** | ARP: N39 27.5 W031 07.9 | RFF: CAT 4 ① | AD HR: H24



RWY	Slope	TORA m/ft	LDA m/ft	ALS	REDL	Additional
18	+0.2	1400 / 4593	1340 / 4396	-	avbl	P 2.45° L/R (42)
36	-0.2	1400 / 4593	1345 / 4412	-	avbl	P 3° L/R (42)

EU OPS TAKE OFF MINIMA

RWY	Facilities	RVR A B
18/36	RCL (day only) or RCL + REDL	400m
	NIL (day only)	500m

GENERAL INFORMATION

- WARNING**
Turbulence and windshear may be expected.
- TWY RESTRICTION**
TWY A width 15m/49ft.

© Navitech - lpf01laorg0

Reverse side blank

Change: New

NDB RWY 36 a

FLORES

Flores APP/TWR
118.8

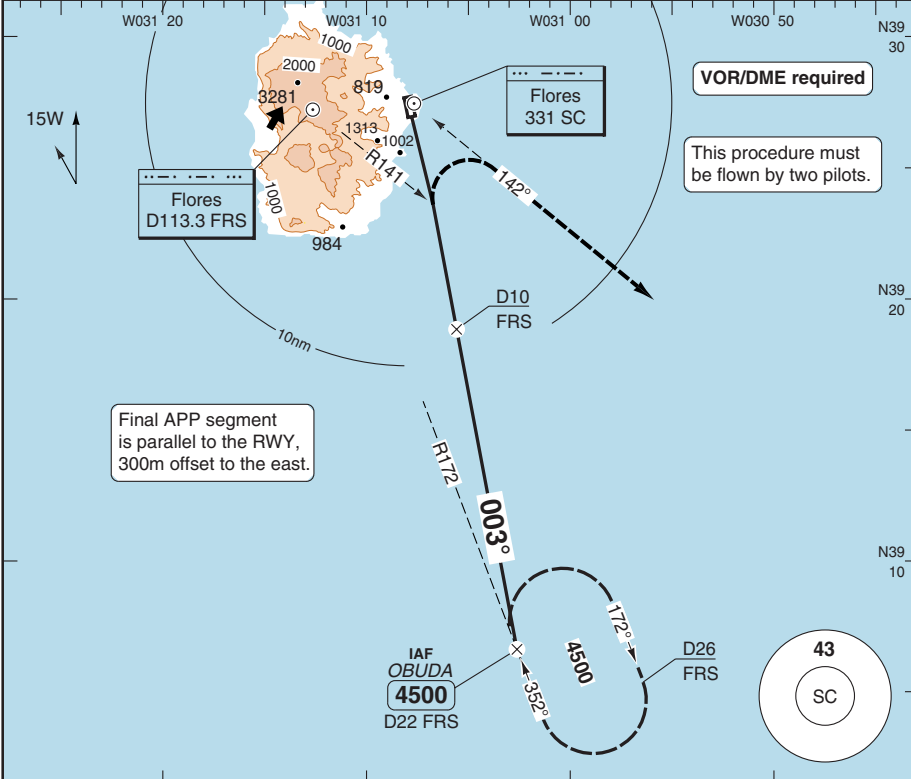
NDB 331 SC | FAT 003° | TDZ Elev 109 | AD Elev 108 | TL ATC | TA 5000

VOR/DME required

This procedure must be flown by two pilots.

Final APP segment is parallel to the RWY, 300m offset to the east.

PANS OPS

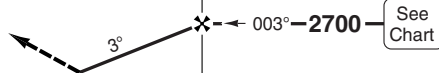


MAPt R141 FRS

SC

D10 FRS

As soon as possible turn right to 142° from [331 SC] climbing to **4500**, then proceed to OBUDA HP.



0 1 2 3 4 5 6 7 8 9 10 11 12 13 14 15 16 17 nm

ACFT

NDB Circling a

a East of AD

LDA 1345x30
4412x98ft
P 3° L/R (42)

STATE

A	1240 (1136) 6.0km
B	



NALS

Reverse side blank

JAR-OPS Landing Minima

FLORES

The following Minima is for Public Transport aircraft and conforms to JAR-OPS1 regulations.

STRAIGHT-IN APPROACH		C				D			
R/W	Procedure	DA/ MDA QNH ft	DH/ MDH QFE ft	VIS m	VIS No ALS m	DA/ MDA QNH ft	DH/ MDH QFE ft	VIS m	VIS No ALS m
36	NDB/DME	N/A	N/A	N/A	N/A	N/A	N/A	N/A	N/A

Notes:

CIRCLING		C			D		
R/W	Procedure	MDA QNH ft	MDH QFE ft	Vis m	MDA QNH ft	MDH QFE ft	Vis m
36	NDB/DME (1)	N/A	N/A	N/A	N/A	N/A	N/A

Notes:

(1) East of RWY 18/36 only.

TAKE-OFF		C		D	
Runway	Facilities	RVR	Vis	RVR	Vis
18/36	Nil (Day only)	N/A	N/A	N/A	N/A

Notes:

JAR-OPS Landing Minima

FLORES

The following Minima is for Public Transport aircraft and conforms to JAR-OPS1 regulations.

STRAIGHT-IN APPROACH		A				B			
R/W	Procedure	DA/ MDA QNH ft	DH/ MDH QFE ft	VIS m	VIS No ALS m	DA/ MDA QNH ft	DH/ MDH QFE ft	VIS m	VIS No ALS m
36	NDB/DME	1240	1140	6000	N/A	1240	1140	6000	N/A

Notes:

CIRCLING		A			B		
R/W	Procedure	MDA QNH ft	MDH QFE ft	Vis m	MDA QNH ft	MDH QFE ft	Vis m
36	NDB/DME (1)	1250	1140	6000	1250	1140	6000

Notes:

(1) East of RWY 18/36 only.

TAKE-OFF		A		B	
Runway	Facilities	RVR	Vis	RVR	Vis
18/36	Nil (Day only)	500	-	500	-

Notes: