

## Airport information:

Country: Portugal

City: CASCAIS

Coordinates: N 38° 43.5', W 009° 21.3'

Elevation: 325

Customs: Customs Non Scheduled PPR 48HRS

Fuel: 100LL, Jet

RFF: CAT 3, CAT 5 PNR 24HR

hours: HO

## Runways:

Runway 17

Takeoff length: 1450, Landing length: 1190

Runway 35

Takeoff length: 1360, Landing length: 1190

# EU OPS Landing Minima

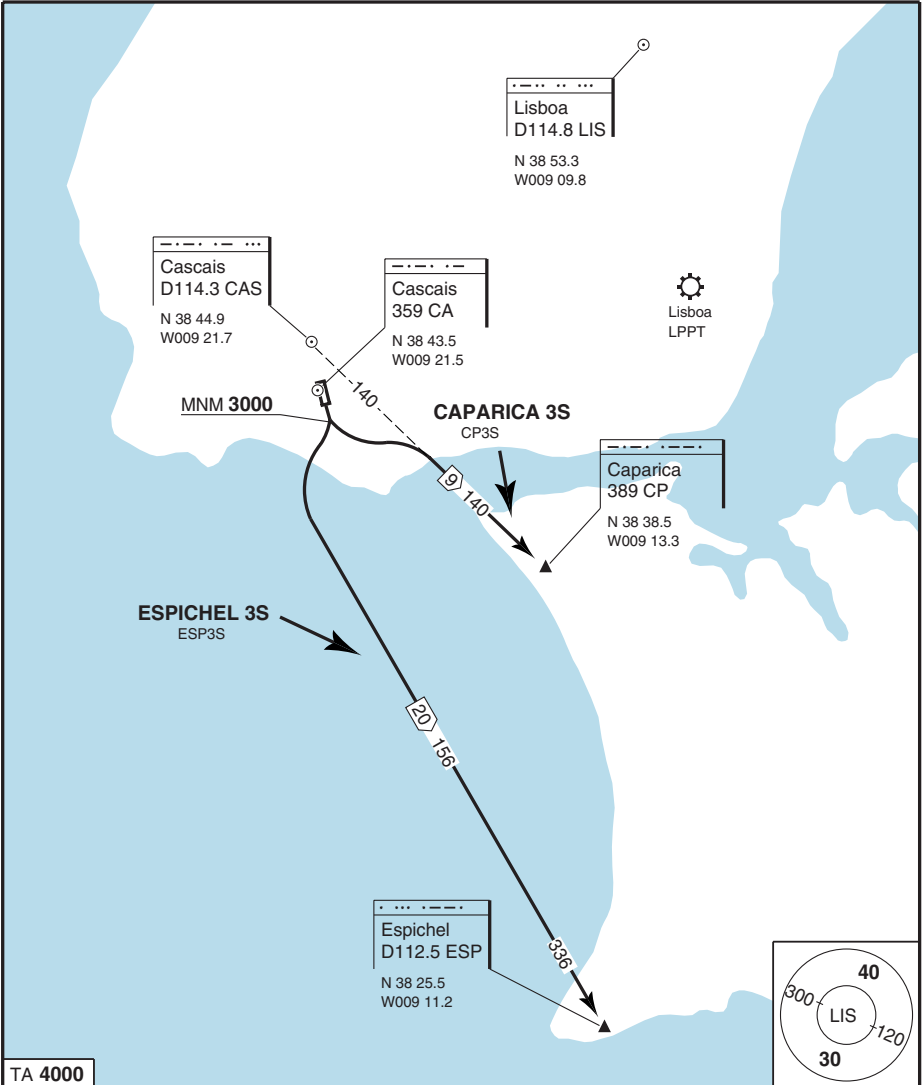
This EU OPS minima is mandatory. The minima on all pages conforms to JAR-OPS regulations and should not be used.

EU OPS		TAKE OFF MINIMA			
RWY	Facilities	RVR			
		A	B	C	D
17/35	RCL (day only) or RCL + REDL	400m			
	NIL (day only)	500m			

## VOR RWY 35

ACFT	VOR+DME	Circling <sup>a</sup>
EU OPS A	950 (670) 1500m	1000 (670) 1.5km
		1000 (670) 1.6km

<sup>a</sup> West or East of AD.



TA 4000

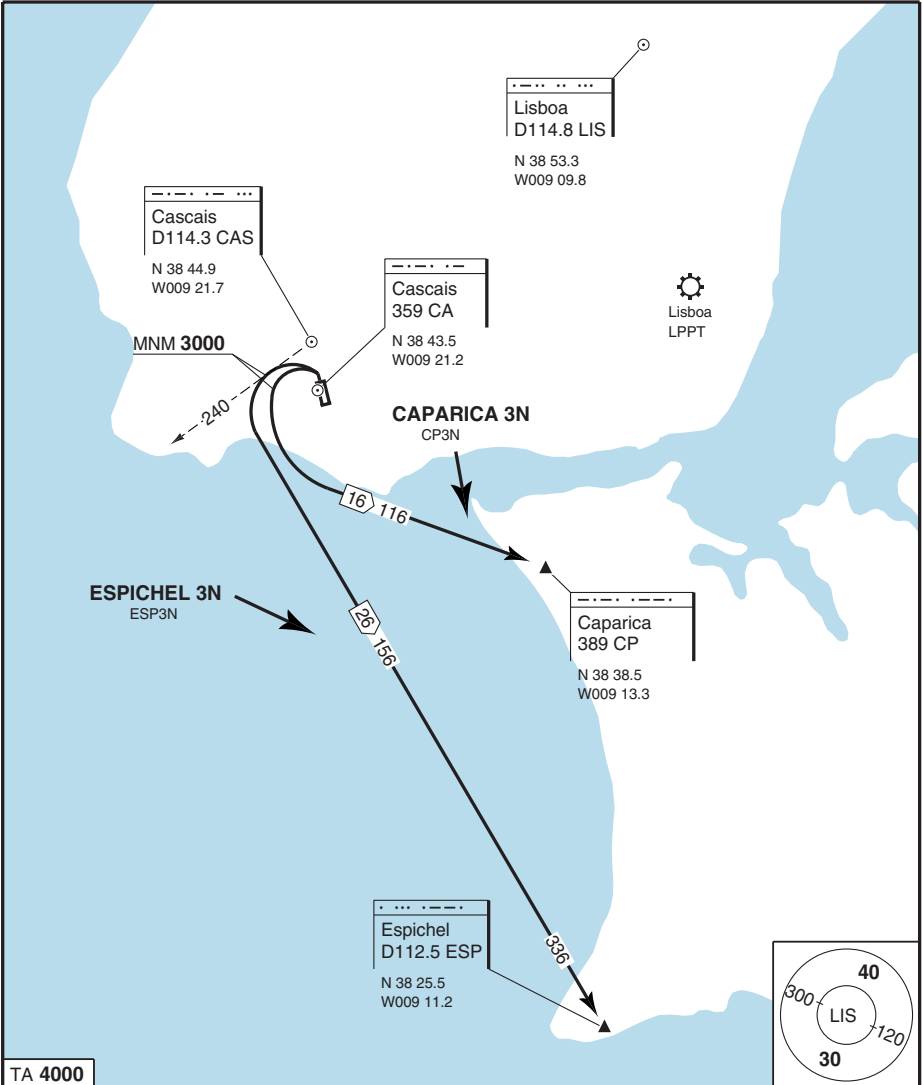
COM: Contact Lisboa APP 119.100 after TKOF.

ALT RESTRICTION  
Climb to 3000.

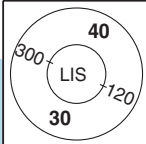
CAPARICA 3S  
Climb to 3000 - turn L - R140 CAS - CP.

ESPICHEL 3S  
Climb to 3000 - turn R - R336 ESP - ESP.

C  
A  
S  
C  
A  
I  
S  
  
P  
O  
R  
T  
U  
G  
A  
L



TA 4000



© European Aeronautical Group -tpos04rd basqo

COM: Contact Lisboa APP 119.100 after TKOF.

MNM CLIMB GRADIENT  
7.9% to 900.

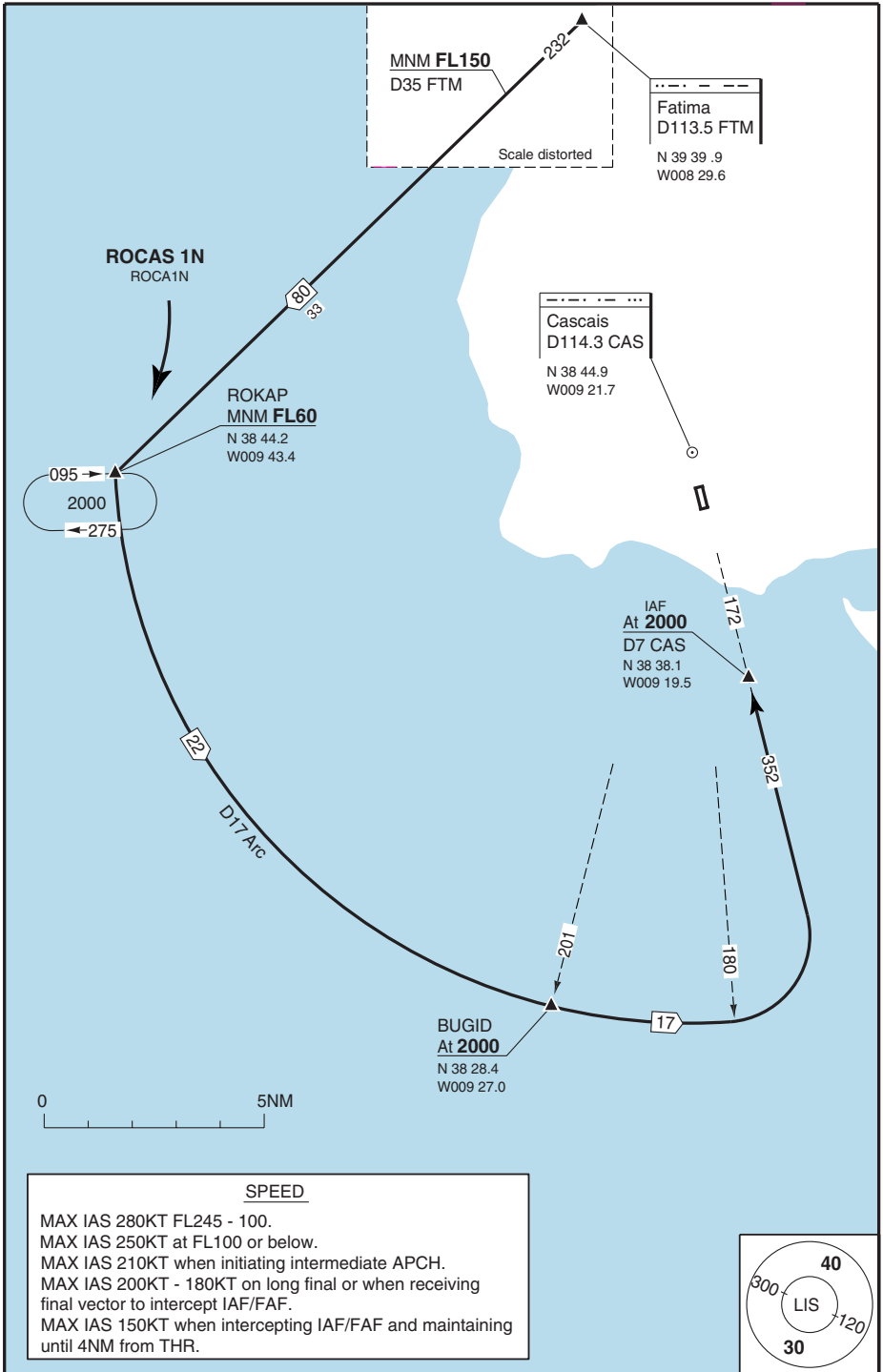
ALT RESTRICTION  
Climb to 3000.

CAPARICA 3N  
Turn L as soon as possible. Maintain visual ground contact up to 900 climbing to 3000 - intercept 116° to CP - CP.

ESPICHEL 3N  
Turn L as soon as possible - R240 CAS - maintain visual ground contact up to 900 climbing to 3000 - turn L - R336 ESP - ESP.

Change: Renumberd, SID designators, RDL

**THIS CHART IS A PART OF NAVIGRAPH NDAC AND IS INTENDED FOR FLIGHT SIMULATION USE ONLY**



© European Aeronautical Group - Ipcso1abasa0 - G - P

Reverse side blank