

## Airport information:

Country: Portugal

City: CORVO

Coordinates: N 39° 40.3', W 031° 06.8'

Elevation: 62

Customs:

Fuel:

RFF:

hours:

## Runways:

Runway 11

Takeoff length: 800, Landing length: 800

Runway 29

Takeoff length: 800, Landing length: 800

WEF 19 NOV 09

10 - 1 | 13 OCT 09

Portugal - LPCR / CVU

# AERODROME

# CORVO

Curvo INFO  
**122.3**

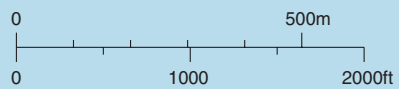
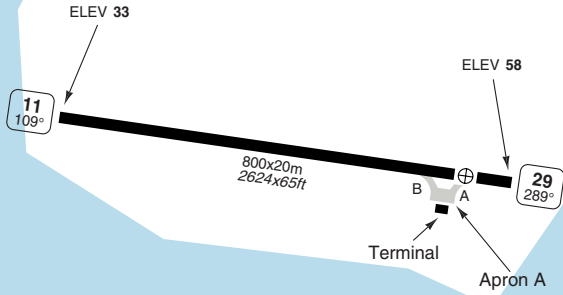
Flores TWR  
**118.8**

AD Elev **62** | ARP: N39 40.3 E031 06.8 | RFF: CAT 4 | AD HR: HO

W031 07



THR Coordinates		
RWY 11	N39 40.3	W031 07.3
RWY 29	N39 40.3	W031 06.7



N39 40

RWY	Slope	TORA m/ft	LDA m/ft	ALS	REDL
11	0	800 / 2624	800 / 2624	-	avbl
29	0	800 / 2624	800 / 2624	-	avbl

**EU OPS TAKE OFF MINIMA**

RWY	Facilities	RVR
		A B
11/29	RCL (day only) or RCL + REDL	400m
	NIL (day only)	500m

© Navitech - lpcr01laorg0

Change: New

**THIS CHART IS A PART OF NAVIGRAPH NDAC AND IS INTENDED FOR FLIGHT SIMULATION USE ONLY**

# AERODROME

# CORVO

## GENERAL INFORMATION

### 1. AD RESTRICTIONS

- 1.1. This is a NON-CONTROLLED AD.
- 1.2. VMC and daylight OPS only.
- 1.3. All authorizations must be obtained through Flores TWR.
- 1.4. Two way communication required.
- 1.5. Ground raised rapidly very close to the AD on north side. This fact generates very often turbulence and windshear.
- 1.6. Due to high terrain, flights are not permitted north of RWY.

### 2. CIRCUITS

Right hand RWY 11.

### 3. TWY RESTRICTIONS

TWY A and B width 10.5m/34ft.

### 4. DEPARTURES

- 4.1. Contact Flores TWR prior TKOF to obtain ATC clearance and traffic information:
- 4.2. RWY 11: Immediately after TKOF, turn right to HDG 165° and CTC Flores TWR.
- 4.3. RWY 29: Immediately after TKOF, turn left to HDG 165° and CTC Flores TWR.

WEF 19 NOV 09

50 - 1 | 13 OCT 09

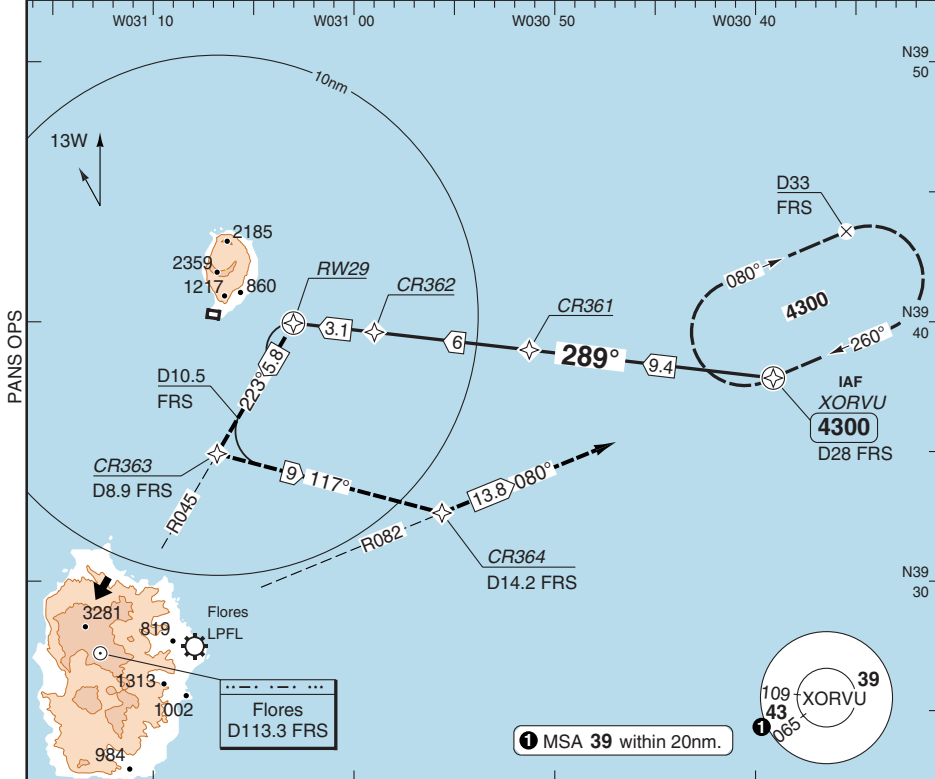
Portugal - LPCR / CVU

**RNAV RWY 29 GNSS**

**CORVO**

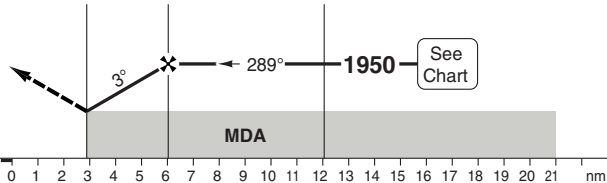
Horta APP <b>120.6</b>	TWR <b>118.0</b>	Flores TWR <b>118.8</b>	Corvo INFO <b>122.3</b>
---------------------------	---------------------	----------------------------	----------------------------

RNAV	FAT <b>289°</b>	THR Elev <b>58</b>	AD Elev <b>62</b>	TL <b>ATC</b>	TA <b>5000</b>
------	-----------------	--------------------	-------------------	---------------	----------------



MAPt RW29	RW29	CR362	CR361
-----------	------	-------	-------

Turn left (MAX 130kt in turn) climbing to **4300** to XORVU HP via CR363 and CR364. CTC Flores TWR.



ACFT	LNAV	Circling <b>a</b>	<b>a</b> South of AD	THR	2.9°	LDA 800x20
A	1000 (942) 1500m	1000 (942) 1.5km		29	ALT	2624x65ft
B		1000 (942) 1.6km		6	1950	
				5	1640	
				4	1340	
				3	1030	
				2.9	1000	
GS	100	120	140	160		
ROD 2.9°	520	620	720	820		

Note: AA refers to CR362 - RW29

© Navtech - lpcr01iaip00

NALS Reverse side blank

## JAR-OPS Landing Minima

CORVO

The following Minima is for Public Transport aircraft and conforms to JAR-OPS1 regulations.

STRAIGHT-IN APPROACH		C				D			
R/W	Procedure	DA/ MDA QNH ft	DH/ MDH QFE ft	RVR  m	RVR No ALS m	DA/ MDA QNH ft	DH/ MDH QFE ft	RVR  m	RVR No ALS m
29	RNAV (LNAV)	N/A	N/A	N/A	N/A	N/A	N/A	N/A	N/A

Notes:

CIRCLING		C			D		
R/W	Procedure	MDA QNH ft	MDH QFE ft	Vis m	MDA QNH ft	MDH QFE ft	Vis m
29	RNAV (LNAV)(1)	N/A	N/A	N/A	N/A	N/A	N/A

Notes:

(1) South of RWY only.

TAKE-OFF		C		D	
Runway	Facilities	RVR	Vis	RVR	Vis
11/29	REDL and/or RCL	N/A	N/A	N/A	N/A
11/29	Nil (Day only)	N/A	N/A	N/A	N/A

Notes:

## JAR-OPS Landing Minima

CORVO

The following Minima is for Public Transport aircraft and conforms to JAR-OPS1 regulations.

STRAIGHT-IN APPROACH		A				B			
R/W	Procedure	DA/ MDA QNH	DH/ MDH QFE	RVR	RVR	DA/ MDA QNH	DH/ MDH QFE	RVR	RVR
		ft	ft	m	m	ft	ft	m	m
29	RNAV (LNAV)	1000	950	1500	N/A	1000	950	1500	N/A

Notes:

CIRCLING		A			B		
R/W	Procedure	MDA QNH ft	MDH QFE ft	Vis m	MDA QNH ft	MDH QFE ft	Vis m
29	RNAV (LNAV)(1)	1010	950	1500	1010	950	1600

Notes:

(1) South of RWY only.

TAKE-OFF		A		B	
Runway	Facilities	RVR	Vis	RVR	Vis
11/29	REDL and/or RCL	400	-	400	-
11/29	Nil (Day only)	500	-	500	-

Notes: