

Airport information:

Country: Portugal

City: BEJA

Coordinates: N 38° 04.7', W 007° 56.0'

Elevation: 636

Customs: Nil

Fuel: Not avbl

RFF: CAT 8 MON-THU 0830-1715, FRI 0830-1200. CAT 7 other times

hours: MON-THU: 0830-1715; FRI: 0830-1200, SAT, SUN and PH: SR-SS PPR

Runways:

Runway 01L

Takeoff length: 3450, Landing length: 3450

Runway 01R

Takeoff length: 2951, Landing length: 2951

Runway 19L

Takeoff length: 2951, Landing length: 2951

Runway 19R

Takeoff length: 3450, Landing length: 3450

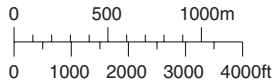
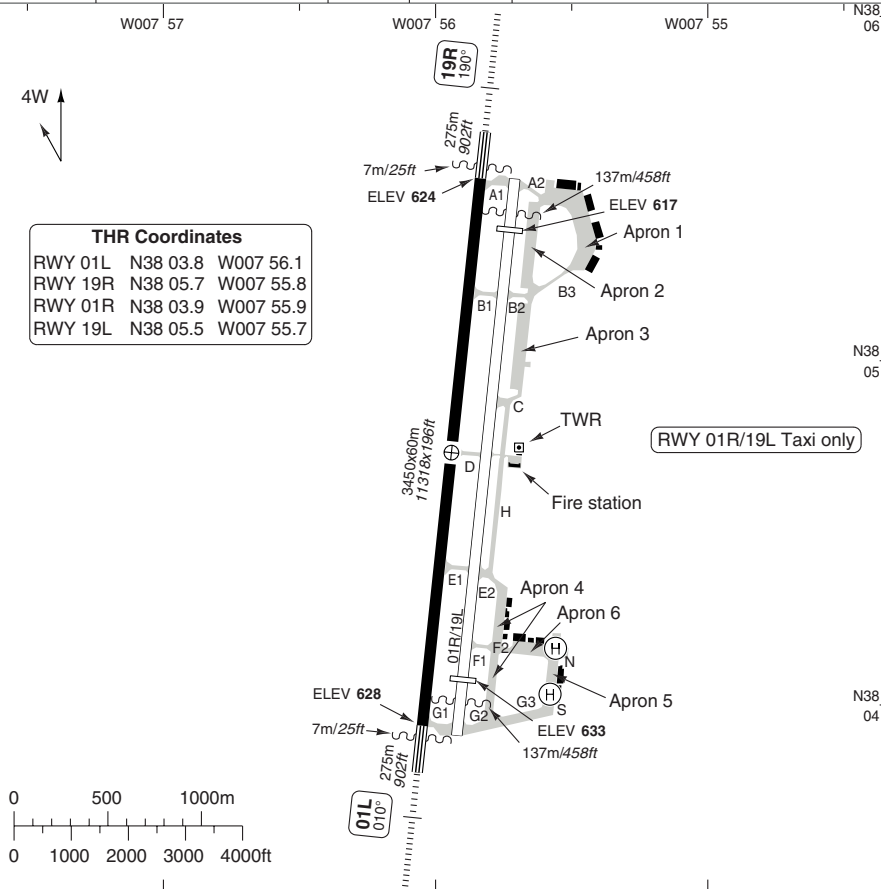
AERODROME

Beja APN 130.1	TWR 130.4 122.1
--------------------------	-------------------------------------

AD Elev **636** ARP: N38 04.7 W007 56.0 RFF: **1** AD HR: **2**



THR Coordinates			
RWY 01L	N38 03.8	W007 56.1	
RWY 19R	N38 05.7	W007 55.8	
RWY 01R	N38 03.9	W007 55.9	
RWY 19L	N38 05.5	W007 55.7	



RWY	Slope	TORA m/ft	LDA m/ft	ALS	REDL	Additional
01L	0	3450 / 11318	3450 / 11318	H-D 3	H 4	P 3° (60)
19R	0	3450 / 11318	3450 / 11318	H-D 3	H	P 3° (58)

- 1** CAT 8 MON-THU 0830 - 1715, FRI 0830 - 1200. CAT 7 other times.
- 2** MON-THU 0830 - 1715, FRI 0830 - 1200. **3** 630m. **4** White.

EU OPS		TAKE OFF MINIMA	
RWY	Facilities	RVR A B C D	
01L/19R	RCL (day only) or RCL + REDL	400m	
	NIL (day only)	500m	

© Navtech - lpbj01laorg0

Change: New spec.

THIS CHART IS A PART OF NAVIGRAPH NDAC AND IS INTENDED FOR FLIGHT SIMULATION USE ONLY

AERODROME

BEJA

10 - 2

GENERAL INFORMATION

1. CAUTION

Emergency safe ALT **4700** within 100nm.

2. NOTE

RWY 01R/19L available only for TWY operations.

3. TWY RESTRICTION

3.1 TWY A2, B2, B3, C, D, E2, F1, G2, G3 and H width 15m /49ft.

3. AREA NOT VISIBLE FROM TWR

TWY B3, F2, G3, north and south heliport.

4. NOISE ABATEMENT PROCEDURE

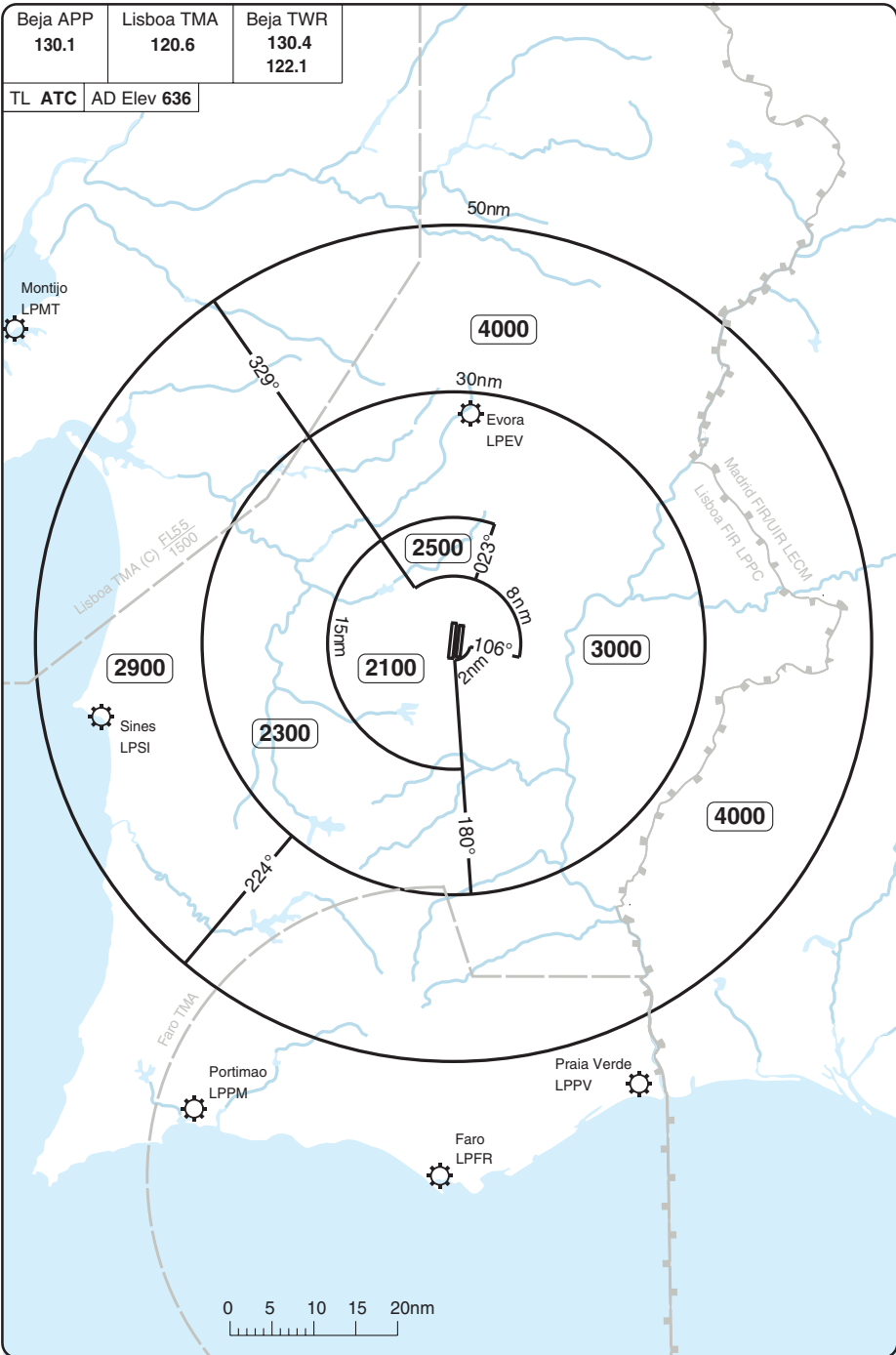
LDG and/or TKOF is forbidden by law between 00 - 06 except in case of ACFT emergencies, medical evacuations and humanitarian flights.

BEJA

RADAR Minimum Altitudes

Beja APP 130.1	Lisboa TMA 120.6	Beja TWR 130.4 122.1
-------------------	---------------------	----------------------------

TL ATC AD Elev 636



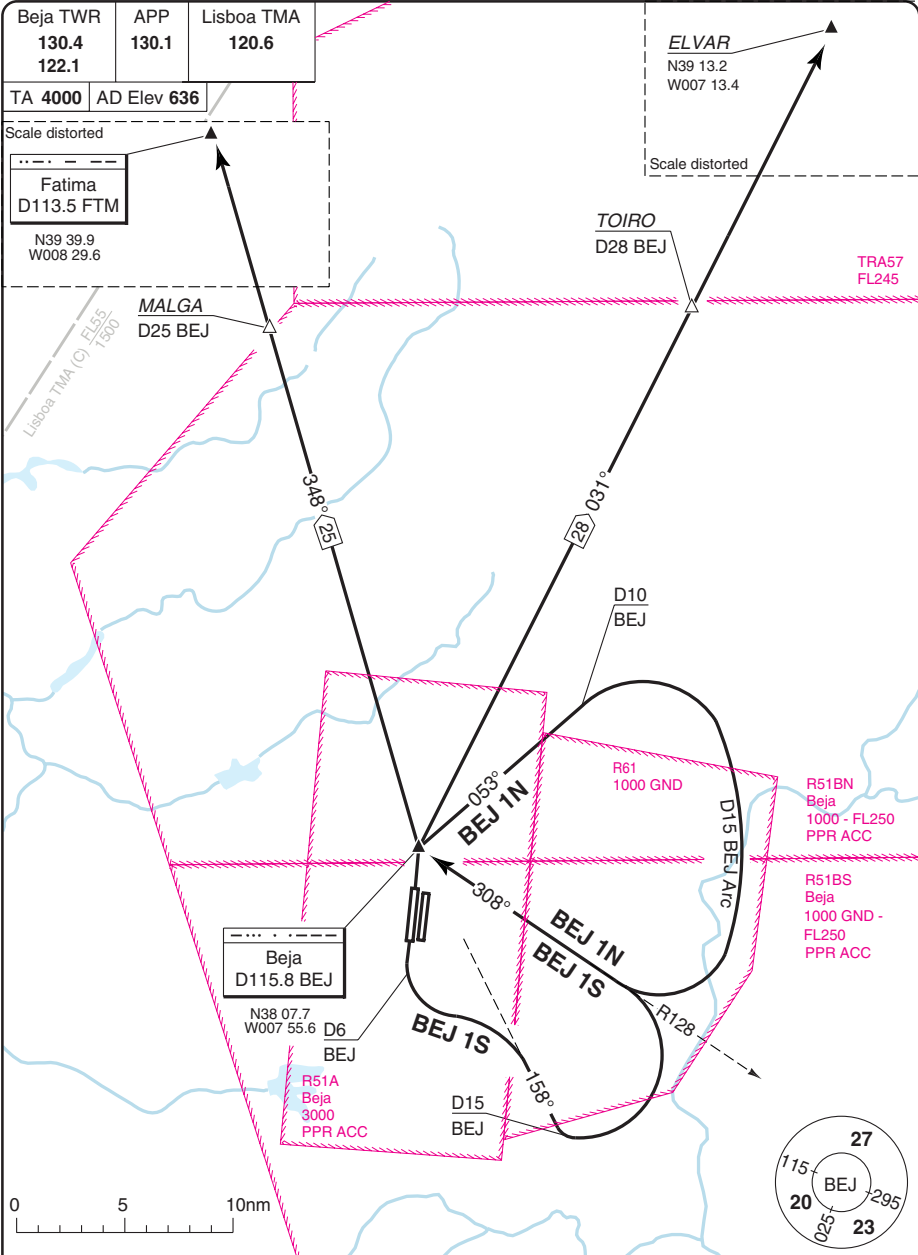
20 - 1

Change: New spec.

THIS CHART IS A PART OF NAVIGRAPH NDAC AND IS INTENDED FOR FLIGHT SIMULATION USE ONLY

SID RWY 01L/19R BEJ 1N, BEJ 1S

BEJA



RWY	SID	Routing
01L	BEJ 1N	Climb on 010° - BEJ - turn right - intcpt R053 BEJ - at D10 turn right - intcpt D15 BEJ arc - intcpt R128 BEJ/308° - follow SID.
19R	BEJ 1S	Climb on 190° - at D6 BEJ turn left - intcpt R158 BEJ - at D15 BEJ turn left - intcpt R128 BEJ/308° - follow SID.

Change: New spec.

THIS CHART IS A PART OF NAVIGRAPH NDAC AND IS INTENDED FOR FLIGHT SIMULATION USE ONLY

© Navtech - lpbj01daorgo

30 - 1

Beja TWR 130.4 122.1	APP 130.1	Lisboa TMA 120.6
----------------------------	--------------	---------------------

TA 4000	AD Elev 636
---------	-------------

GAIOS
D30 BEJ
N38 16.5
W008 32.6

Lisboa TMA (C) FL55-1500

R51BN
Beja
1000 - FL250
PPR ACC

MIGAS
D14 BEJ

16
GAIOS 1N
GAIOS 1S

292° 14

Beja
D115.8 BEJ
N38 07.7
W007 55.6

R61
1000 GND

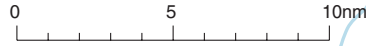
R51BS
Beja
1000 GND -
FL250
PPR ACC

GAIOS 1N
GAIOS 1N

GAIOS 1S
GAIOS 1S

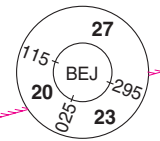
D6
BEJ

R149



RWY	SID	Routeing
01L	GAIOS 1N	Climb on 010° - BEJ - turn left - intcp R292 BEJ - GAIOS.
19R	GAIOS 1S	Climb on 190° - at D6 BEJ turn left - intcp 329°/R149 BEJ - BEJ - turn left intcp R292 BEJ - GAIOS.

R51A
Beja
3000
PPR ACC



© Navtech - lpbj03daorg0

Beja TWR 130.4 122.1	APP 130.1	Lisboa TMA 120.6
----------------------------	--------------	---------------------

TA 4000 AD Elev 636

Beja
D115.8 BEJ
N38 07.7
W007 55.6

R51A
Beja
3000
PPR ACC

R61
1000 GND

ROSAL 1N
ROSAL 1N

ROSAL 1N
ROSAL 1S

D6
BEJ

ROSAL 1S
ROSAL 1S

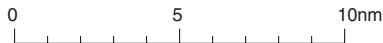
D10
BEJ

40 104°

R51BN
Beja
1000 - FL250
PPR ACC

R51BS
Beja
1000 GND -
FL250
PPR ACC

ROSAL
D40 BEJ
N38 01.3
W007 06.1



RWY	SID	Routing
01L	ROSAL 1N	Climb on 010° - BEJ - turn right - at D10 BEJ intcp R104 BEJ - ROSAL.
19R	ROSAL 1S	Climb on 190° - at D6 BEJ turn left - at D10 BEJ intcp R104 BEJ - ROSAL.

SID RWY 01L/19R ROSAL 1N ROSAL 1S

30 - 3 | 10 MAR 11

Portugal - L.PBJ
BEJA

THIS CHART IS A PART OF NAVIGRAPH NDAC AND IS INTENDED FOR FLIGHT SIMULATION USE ONLY

Change: New spec.

SID RWY 01L/19R XAPAS 1N, XAPAS 1S

BEJA

Beja TWR	130.4
APP	130.1
Lisboa TMA	120.6

TA 4000	AD Elev	636
Beja D115.8 BEJ		
N38 07.7 W007 55.6		

R51BN
Beja
1000 - FL250
PPR ACC

R51BS
Beja
1000 GND -
FL250
PPR ACC

R51A
Beja
3000
PPR ACC

RB1
1000 GND

XAPAS 1S

D6
BEJ

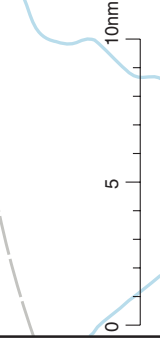
XAPAS 1N
XAPAS 1N

XAPAS 1S
XAPAS 1N

186°

XAPAS
D32 BEJ
N87 35.8
W007 57.0

Faico TMA



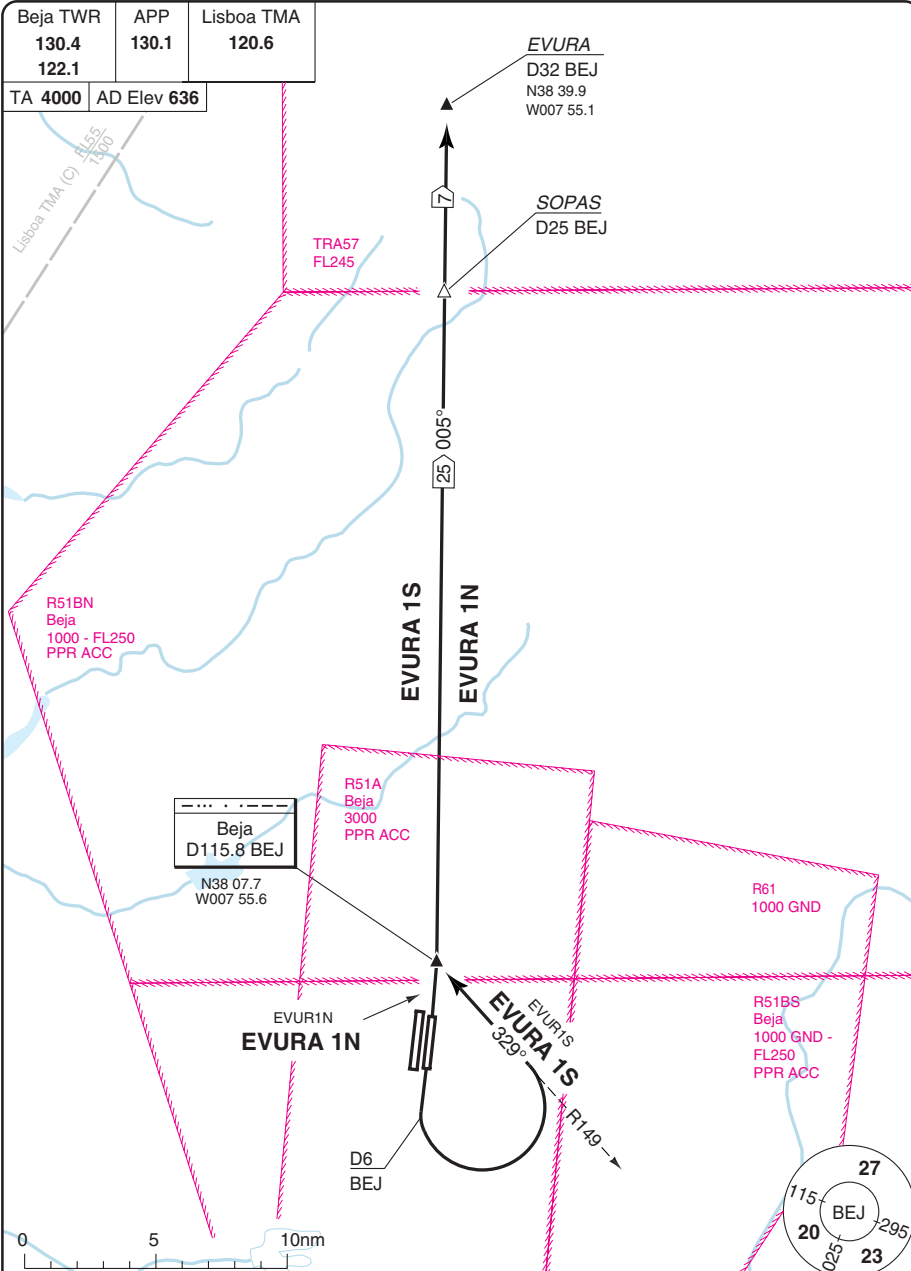
RWY	SID	Routing
01L	XAPAS 1N	Climb on 010° - BEJ - turn right - intcp R186 BEJ - XAPAS.
19R	XAPAS 1S	Climb on 190° - at D6 BEJ intcp R186 BEJ - XAPAS.

Change: New spec.

THIS CHART IS A PART OF NAVIGRAPH NDAC AND IS INTENDED FOR FLIGHT SIMULATION USE ONLY

SID RWY 01R/19L EVURA 1N, EVURA 1S

BEJA



30 - 5

© Navitech - lpbj05daorgo

RWY	SID	Routing
01R	EVURA 1N	Climb on 010° - BEJ - intcp R005 BEJ - EVURA.
19L	EVURA 1S	Climb on 190° - at D6 BEJ turn left - intcp 329°/R149 BEJ - BEJ - turn right intcp R005 BEJ - EVURA.

Change: New spec.

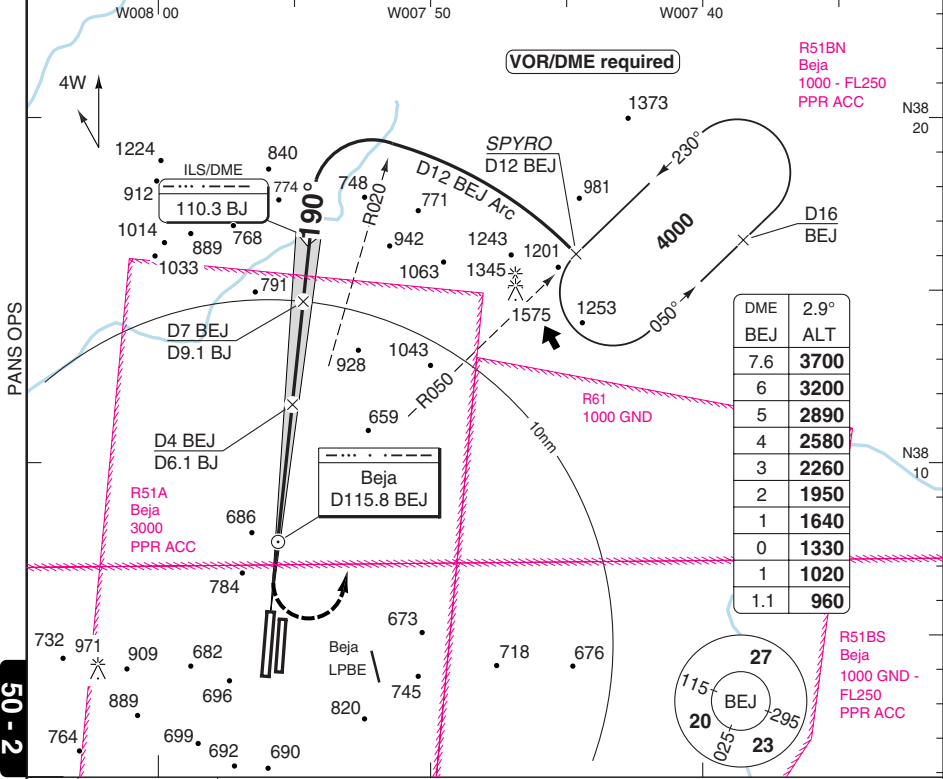
THIS CHART IS A PART OF NAVIGRAPH NDAC AND IS INTENDED FOR FLIGHT SIMULATION USE ONLY

ILS Z RWY 19R

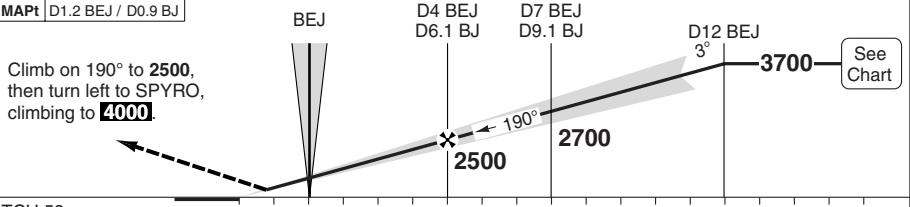
BEJA

Beja APP 130.1	Lisboa TMA 120.6	Beja PAR 123.3	TWR 130.4 122.1
--------------------------	----------------------------	--------------------------	-------------------------------------

ILS/DME 110.3 BJ	FAT 190°	TDZ Elev 624	AD Elev 636	TL ATC	TA 4000
-------------------------	-----------------	---------------------	--------------------	--------	----------------



50 - 2



TCH 58

ACFT	ILS	LOC+DME	Circling
A			1120 (484) 1.5km
B	830 (200)	960 (336)	1140 (500) 1.6km
C	750m	1.1km	1240 (600) 2.4km
D			1340 (700) 3.6km

DME BJ	2.9° ALT	LDA 3450x60 11318x196ft P 3° (58)
9.7	3700	
7	2860	
6	2540	
5	2230	
4	1920	
3	1610	
2	1300	
0.9	960	

GS	80	100	120	140	160
ROD 2.9°	410	510	610	720	820

© Navtech - lpbj02iaip00

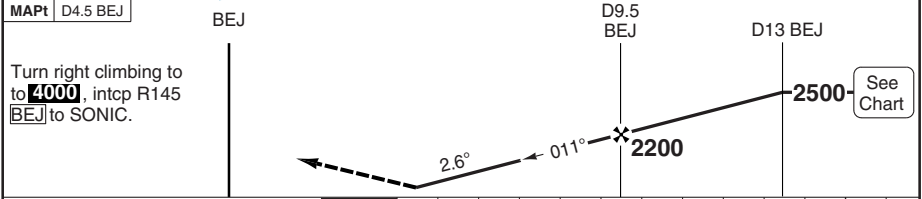
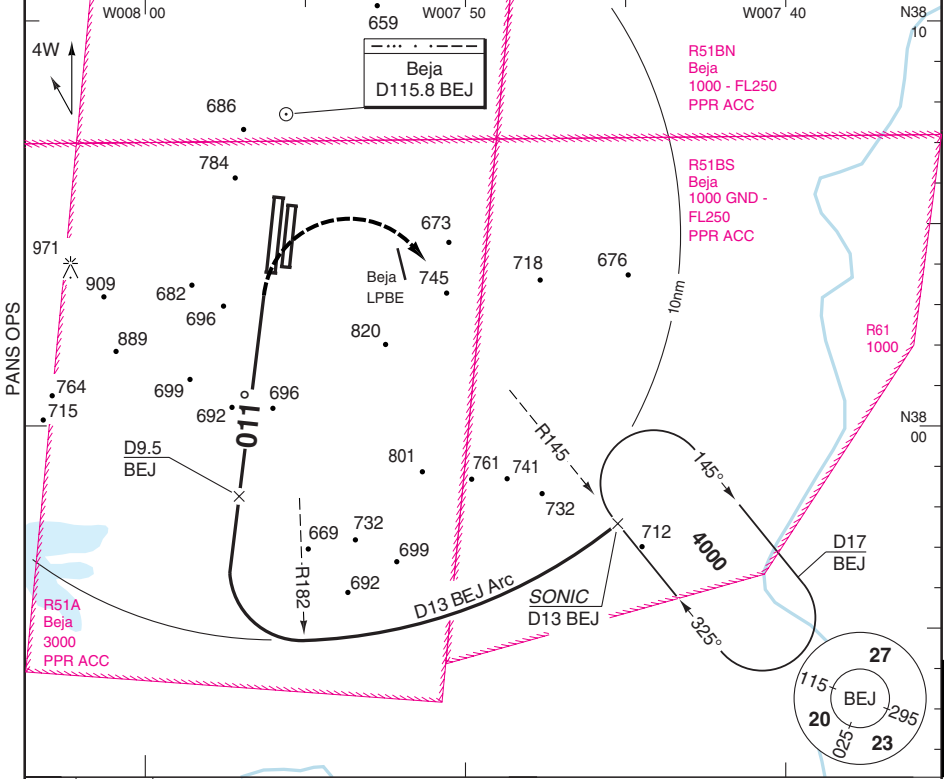
ILS

VOR RWY 01L

BEJA

Beja APP 130.1	Lisboa TMA 120.6	Beja PAR 123.3	TWR 130.4 122.1
--------------------------	----------------------------	--------------------------	-------------------------------------

VOR/DME 115.8 BEJ	FAT 011°	TDZ Elev 636	AD Elev 636	TL ATC	TA 4000
--------------------------	-----------------	---------------------	--------------------	---------------	----------------



ACFT	VOR+DME	Circling	DME BEJ	2.6° ALT	LDA 3450x60 11318x196ft P 3° (60)	
A	1040 (404) 1.5km	1120 (484) 1.5km	10.6	2500	 IALS 630	
B		1140 (500) 1.6km	10	2340		
C		1240 (600) 2.4km	9	2060		
D		1340 (700) 3.6km	8	1790		
			7	1510		
			6	1240		
GS	80	100	120	140	160	
ROD 2.6°	370	470	560	650	740	

© Navtech - lpbj03iaip00

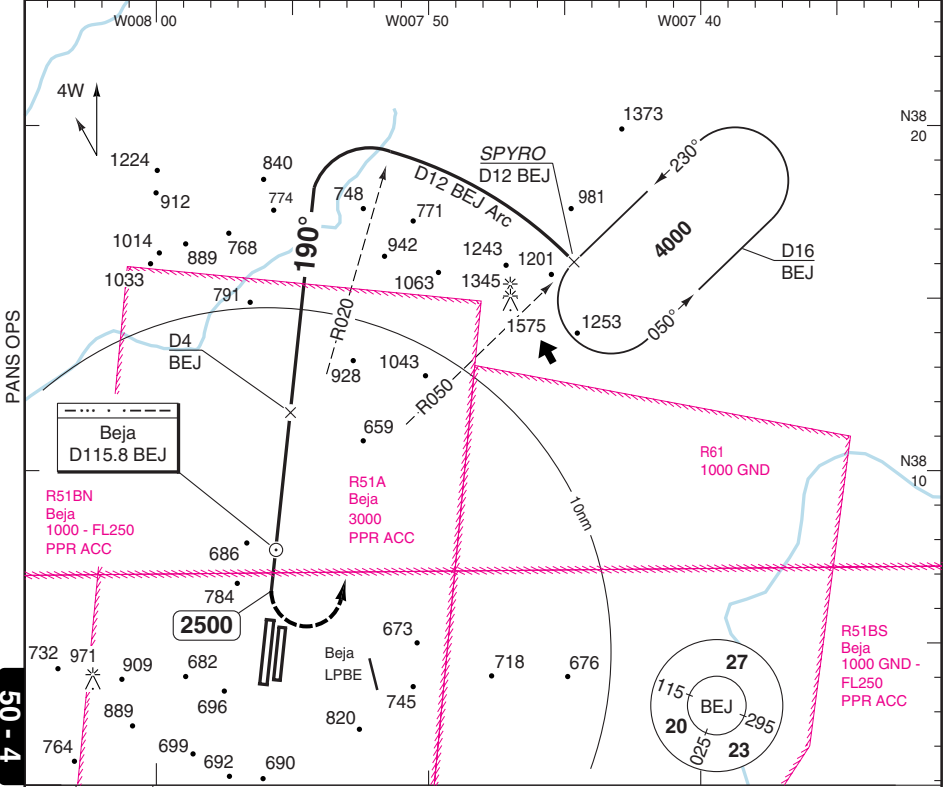
50 - 3

VOR RWY 19R

BEJA

Beja APP 130.1	Lisboa TMA 120.6	Beja PAR 123.3	TWR 130.4 122.1
--------------------------	----------------------------	--------------------------	-------------------------------------

VOR/DME 115.8 BEJ	FAT 190°	TDZ Elev 624	AD Elev 636	TL ATC	TA 4000
--------------------------	-----------------	---------------------	--------------------	--------	----------------

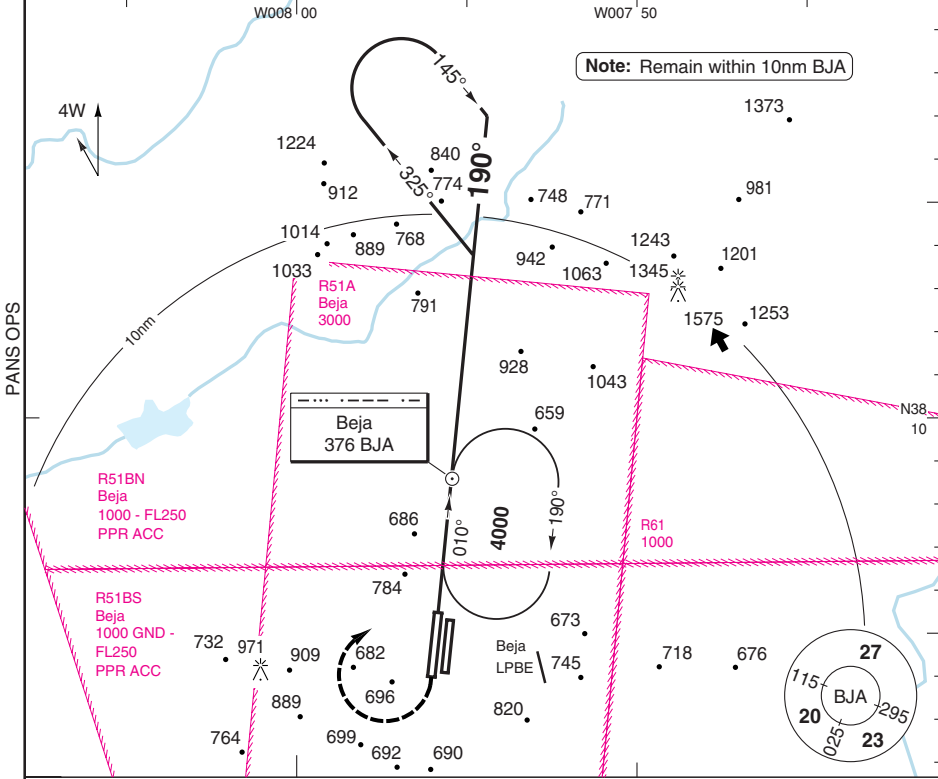


NDB RWY 19R

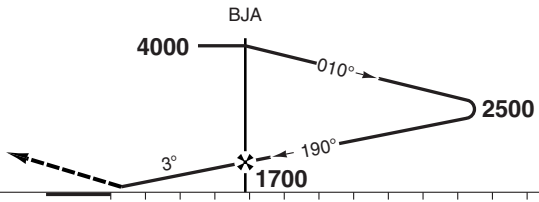
BEJA

Beja APP 130.1	Lisboa TMA 120.6	Beja PAR 123.3	TWR 130.4 122.1
--------------------------	----------------------------	--------------------------	-------------------------------------

NDB 376 BJA	FAT 190°	TDZ Elev 624	AD Elev 636	TL ATC	TA 4000
--------------------	-----------------	---------------------	--------------------	---------------	----------------



Turn right climbing to **4000** to **[BJA]**.



50 - 5

ACFT	NDB	Circling
A	1100 (476) 1.5km	1120 (484) 1.5km
B		1140 (500) 1.6km
C	1100 (476) 1.8km	1240 (600) 2.4km
D		1340 (700) 3.6km

GS	80	100	120	140	160	LDA 3450x60 11318x196ft P 3° (58)
ROD 3.0°	430	540	640	750	850	
FAF +20s	1780	1740	1710	1670	1640	
+40s	1640	1570	1500	1420	1350	
+60s	1500	1390	1280	1180	-	
FAF- 1100	1:55	1:32	1:17	1:05	0:57	
FAF-MAPT	2:55	2:20	1:57	1:40	1:28	

Timetable based on passing FAF at **1930**.

© Navtech - lpbj05iaip00

Reverse side blank

630

JAR-OPS Landing Minima

BEJA

The following Minima is for Public Transport aircraft and conforms to JAR-OPS1 regulations.

STRAIGHT-IN APPROACH		C				D			
R/W	Procedure	DA/ MDA QNH ft	DH/ MDH QFE ft	RVR m	RVR No ALS m	DA/ MDA QNH ft	DH/ MDH QFE ft	RVR m	RVR No ALS m
01L	VOR	1040	410	1400	1800	1040	410	1600	2000
19R	ILS Y, Z	830	200	700	1000	830	200	700	1000
19R	LOC Y, Z	960	340	1400	1800	960	340	1600	2000
19R	VOR	1080	460	1600	2000	1080	460	1800	2000
19R	NDB	1100	480	1600	2000	1100	480	1800	2000

Notes:

CIRCLING		C			D		
R/W	Procedure	MDA QNH ft	MDH QFE ft	Vis m	MDA QNH ft	MDH QFE ft	Vis m
All procedures		1240	600	2400	1340	700	3600

Notes:

TAKE-OFF		C		D	
Runway	Facilities	RVR	Vis	RVR	Vis
01L/19R	REDL and/or RCL	400	-	400	-
01L/19R	Nil (Day only)	500	-	500	-

Notes:

JAR-OPS Landing Minima

BEJA

The following Minima is for Public Transport aircraft and conforms to JAR-OPS1 regulations.

STRAIGHT-IN APPROACH		A				B			
R/W	Procedure	DA/ MDA QNH ft	DH/ MDH QFE ft	RVR m	RVR No ALS m	DA/ MDA QNH ft	DH/ MDH QFE ft	RVR m	RVR No ALS m
01L	VOR	1040	410	1200	1500	1040	410	1300	1500
19R	ILS Y, Z	830	200	700	1000	830	200	700	1000
19R	LOC Y, Z	960	340	1200	1500	960	340	1300	1500
19R	VOR	1080	460	1400	1500	1080	460	1500	1500
19R	NDB	1100	480	1400	1500	1100	480	1500	1500

Notes:

CIRCLING		A			B		
R/W	Procedure	MDA QNH ft	MDH QFE ft	Vis m	MDA QNH ft	MDH QFE ft	Vis m
All procedures		1120	490	1500	1140	500	1600

Notes:

TAKE-OFF		A		B	
Runway	Facilities	RVR	Vis	RVR	Vis
01L/19R	REDL and/or RCL	400	-	400	-
01L/19R	Nil (Day only)	500	-	500	-

Notes: