

## Airport information:

Country: Portugal

City: SANTA MARIA

Coordinates: N 36° 58.4', W 025° 10.3'

Elevation: 308

Customs: Customs

Fuel: 100LL, Jet A1

RFF: CAT 6, CAT 7 to CAT 9 by prior arrangement

hours: 0700-0100

## Runways:

Runway 18

Takeoff length: 3048, Landing length: 3048

Runway 36

Takeoff length: 3048, Landing length: 3048

WEF 04 JUN 09

10 - 1 02 MAY 09

Portugal - LPAZ / SMA

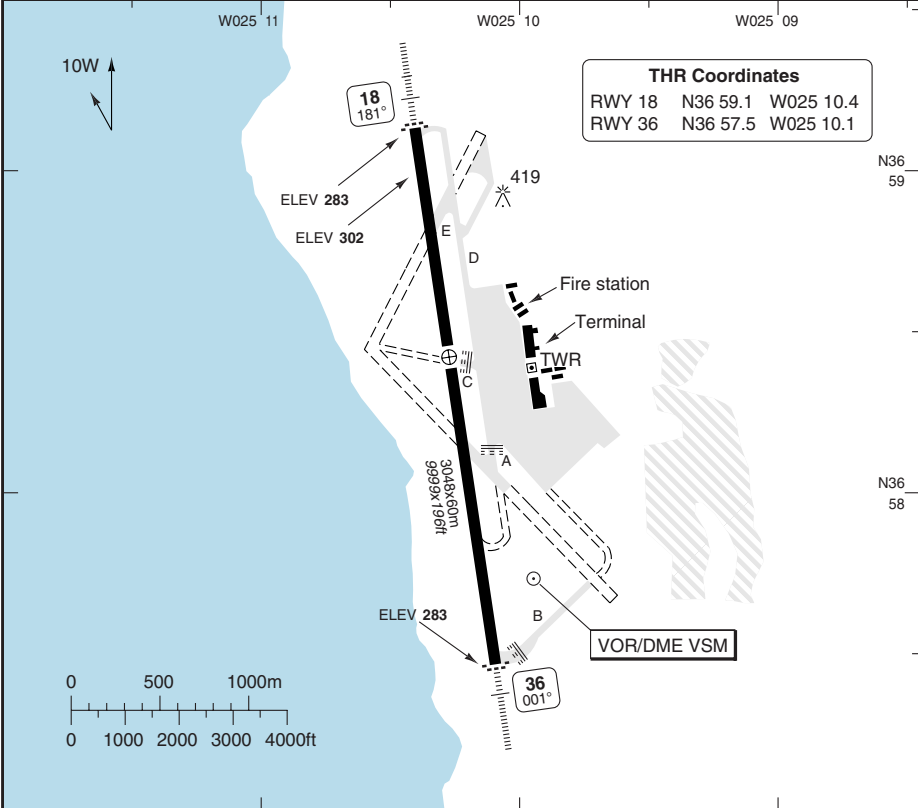
# AERODROME

Azores **SANTA MARIA**

Santa Maria TWR  
118.1

① Higher category AVBL by prior arrangements

AD Elev 308 ARP: N36 58.4 W025 10.3 RFF: CAT 5 ① AD HR: H24



RWY	Slope	TORA m/ft	LDA m/ft	ALS	REDL	Additional
18	0	3048 / 9999	3048 / 9999	H-H ②	H	P 2.75° (29)
36	0	3048 / 9999	3048 / 9999	H-H ②	H	P 2.75° (29)

② 459m.

**EU OPS**

**TAKE OFF MINIMA**

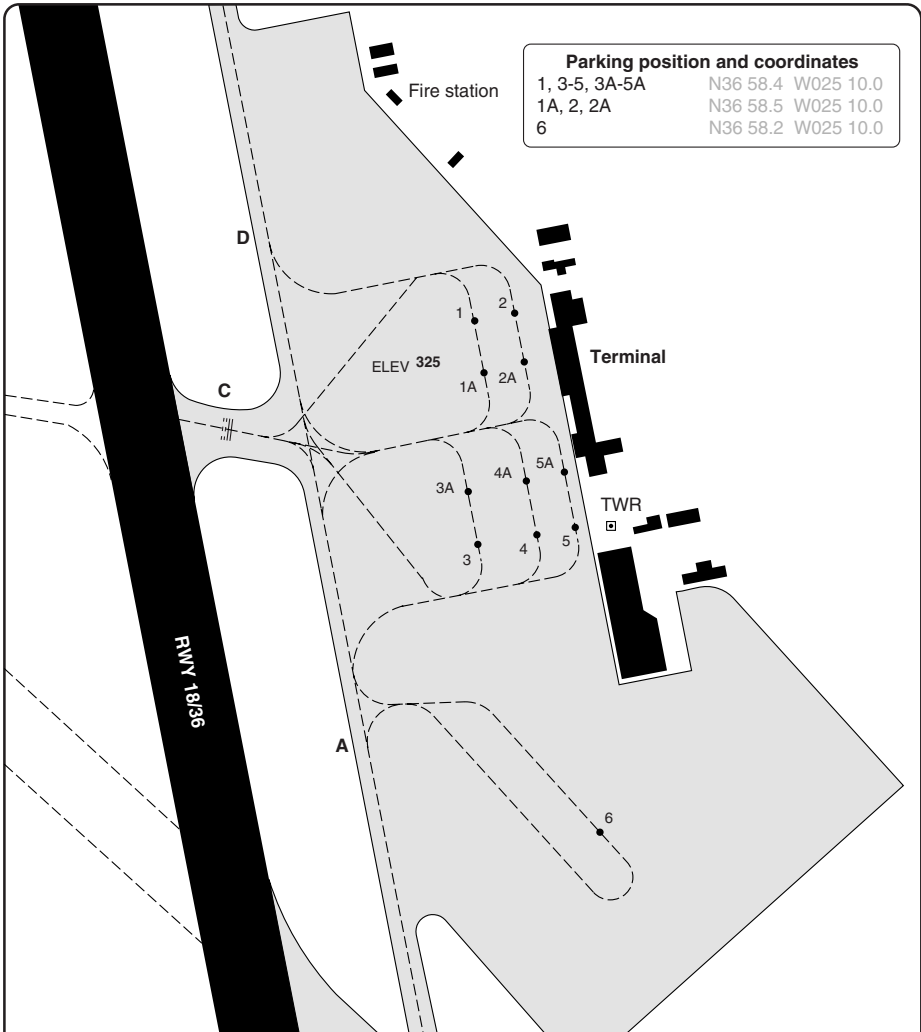
RWY	Facilities	RVR			
		A	B	C	D
18/36	RCL (day only) or RCL + REDL	400m			
	NIL (day only)	500m			

© Navtech EAG - lpaz01laorg0

Change: New spec.

**THIS CHART IS A PART OF NAVIGRAPH NDAC AND IS INTENDED FOR FLIGHT SIMULATION USE ONLY**

**AERODROME**



**GENERAL INFORMATION**

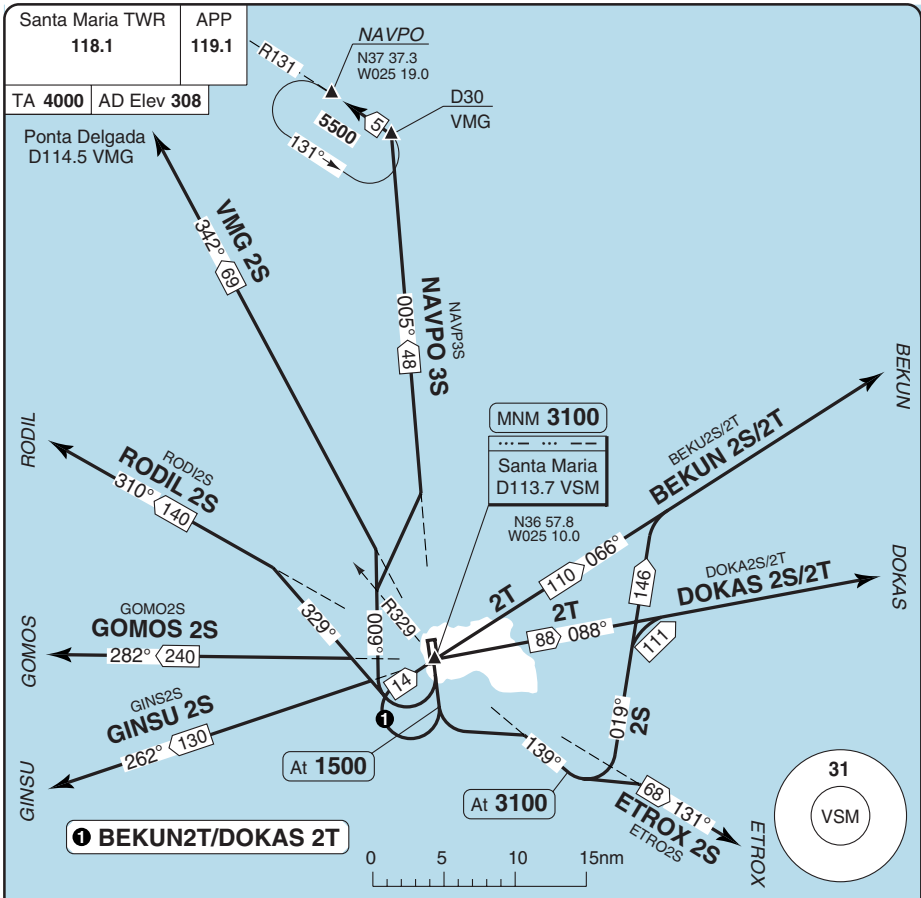
1. **NAV RESTRICTION**  
 VOR VSM unusable:  
 R065-R130 beyond 20nm below 6000ft.
  
2. **TWY RESTRICTION**  
 Due to wingspan TWY A, D and E can not be used by: Boeing 747 / 777  
 Airbus A330 / A340  
 Lockheed C5  
 McDonnell-Douglas MD11  
 Anatov 124 / 225

© NavTech EAG - lpaz02laorg0

Change: New spec.

**THIS CHART IS A PART OF NAVIGRAPH NDAC AND IS INTENDED FOR FLIGHT SIMULATION USE ONLY**

**SID RWY 18**



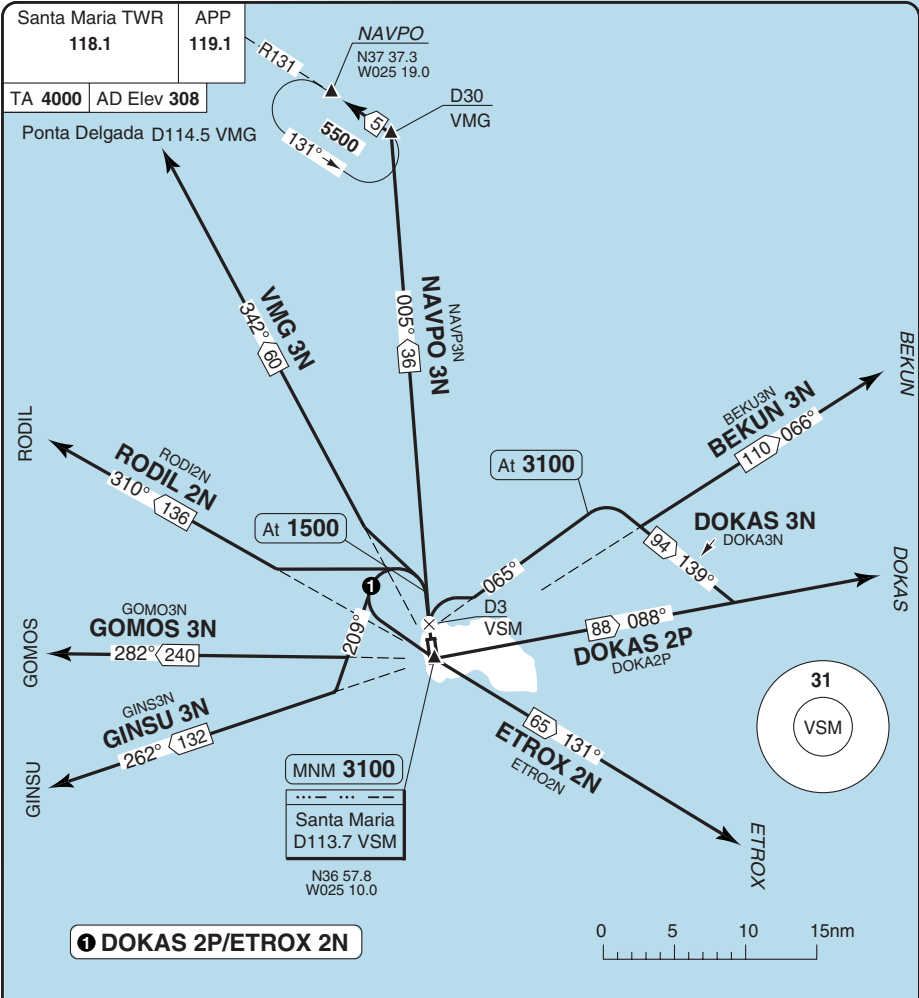
SID	Routeing	Altitudes
BEKUN 2S	Climb on 181° - at 1500 turn left - R139 VSM - at 3100 turn left - 019° - R066 VSM - BEKUN.	
BEKUN 2T	Climb on 181° - at 1500 turn right to VSM - R066 VSM - BEKUN.	VSM MNM 3100
DOKAS 2S	Climb on 181° - at 1500 turn left - R139 VSM - at 3100 turn left - 019° - R088 VSM - DOKAS.	
DOKAS 2T	Climb on 181° - at 1500 turn right to VSM - R088 VSM - DOKAS.	VSM MNM 3100
ETROX 2S	Climb on 181° - at 1500 turn left - R139 VSM - at 3100 turn left - R131 VSM - ETROX.	
GINSU 2S	Turn right - 329° - R262 VSM - GINSU.	
GOMOS 2S	Turn right - 329° - R282 VSM - GOMOS.	
NAVPO 3S	Turn right - 009° (remain W of R010/190 VSM) - at R329 VSM turn right - R005 VSM - R131/D30 VMG - NAVPO HP.	
RODIL 2S	Turn right - 329° - R310 VSM - RODIL.	
VMG 2S	Turn right - 009° (remain W of R010/190 VSM) - R342 VSM - VMG.	

© Navitech EAG - lpaz01daorgo

Change: New spec.

**THIS CHART IS A PART OF NAVIGRAPH NDAC AND IS INTENDED FOR FLIGHT SIMULATION USE ONLY**

**SID RWY 36**



SID	Routeing	Altitudes
BEKUN 3N	Climb on 001° - at D3 VSM turn right - 065° - at 3100 turn right - 139° - R066 VSM - BEKUN.	
DOKAS 3N	Climb on 001° - at D3 VSM turn right - 065° - at 3100 turn right - 139° - R088 VSM - DOKAS.	
DOKAS 2P	Climb on 001° - at 1500 turn left - VSM - R088 VSM - DOKAS.	VSM MNM 3100
ETROX 2N	Climb on 001° - at 1500 turn left - VSM - R131 VSM - ETROX.	VSM MNM 3100
GINSU 3N	Climb on 001° - at 1500 turn left - 209° - R262 VSM - GINSU.	
GOMOS 3N	Climb on 001° - at 1500 turn left - 209° - R282 VSM - GOMOS.	
NAVPO 3N	Climb on R005 VSM - R131 VMG/D30 VMG - NAVPO HP.	
RODIL 2N	Climb on 001° - at 1500 turn left - R310 VSM - RODIL.	
VMG 3N	Climb on 001° - at 1500 turn left - R342 VSM - VMG.	

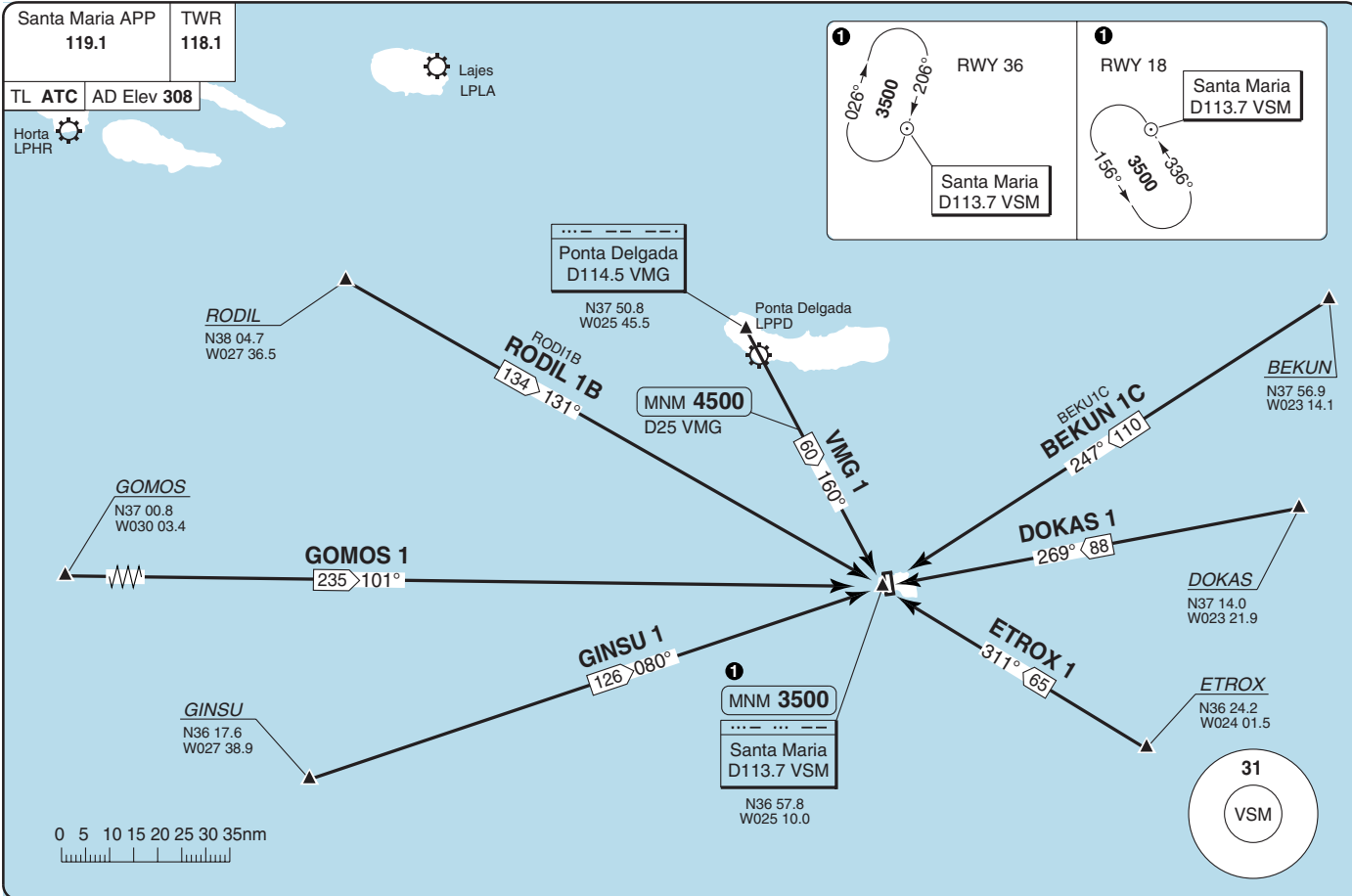
© Navitech EAG - lpaz02daorgo

Change: New spec.

**THIS CHART IS A PART OF NAVIGRAPH NDAC AND IS INTENDED FOR FLIGHT SIMULATION USE ONLY**

THIS CHART IS A PART OF NAVIGRAPH NDAC AND IS INTENDED FOR FLIGHT SIMULATION USE ONLY

Change: New spec.



STAR

WEEF 04 JUN 09

40 - 1 | 02 MAY 09

Azores

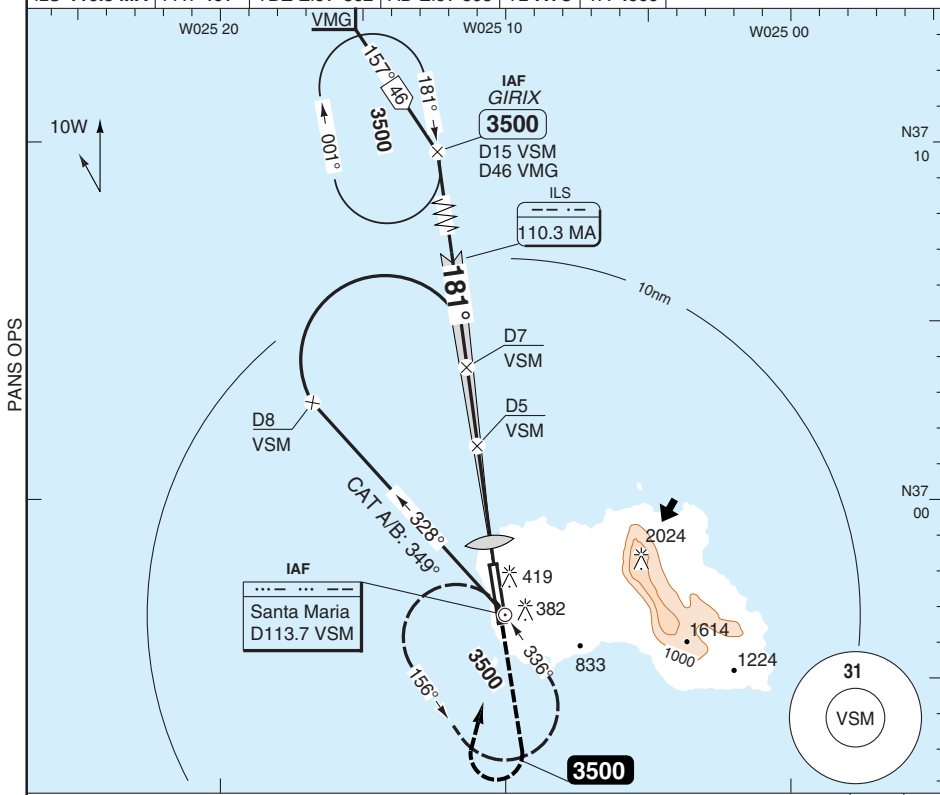
Portugal - LPAZ / SMA  
SANTA MARIA

# ILS RWY 18

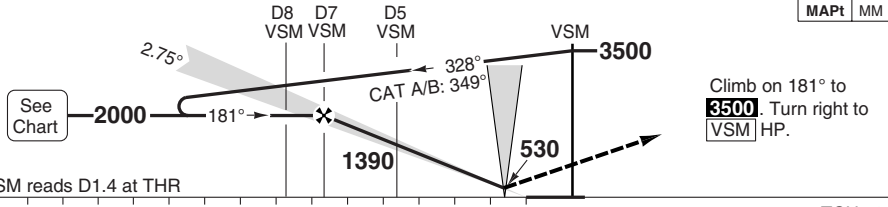
Santa Maria APP  
**119.1**

TWR  
**118.1**

ILS **110.3 MA** | FAT **181°** | TDZ Elev **302** | AD Elev **308** | TL **ATC** | TA **4000**



PANS OPS



VSM reads D1.4 at THR

nm 14 13 12 11 10 9 8 7 6 5 4 3 2 1 0 | TCH 50

ACFT	ILS+DME	LOC+DME	Circling <b>a</b>	<b>a</b> West of RWY
A			<b>710</b> (402) 1.5km	
B	<b>490</b> (200) 750m	<b>580</b> (300) 900m	<b>810</b> (500) 1.6km	
C			<b>910</b> (600) 2.4km	
D			<b>1010</b> (700) 3.6km	

DME VSM	2.8° ALT	LDA 3048x60 9999x196ft P 2.75° (29)
7	<b>2000</b>	
6	<b>1710</b>	
5	<b>1410</b>	
4	<b>1110</b>	
3	<b>810</b>	
2.2	<b>580</b>	

GS	80	100	120	140	160
ROD 2.8°	400	500	600	700	800
FAF-MAPt	3:41	2:56	2:27	2:06	1:50

IALS  
459

© Navitech - lpaz01iaip00

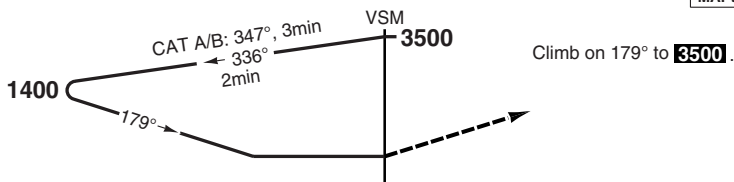
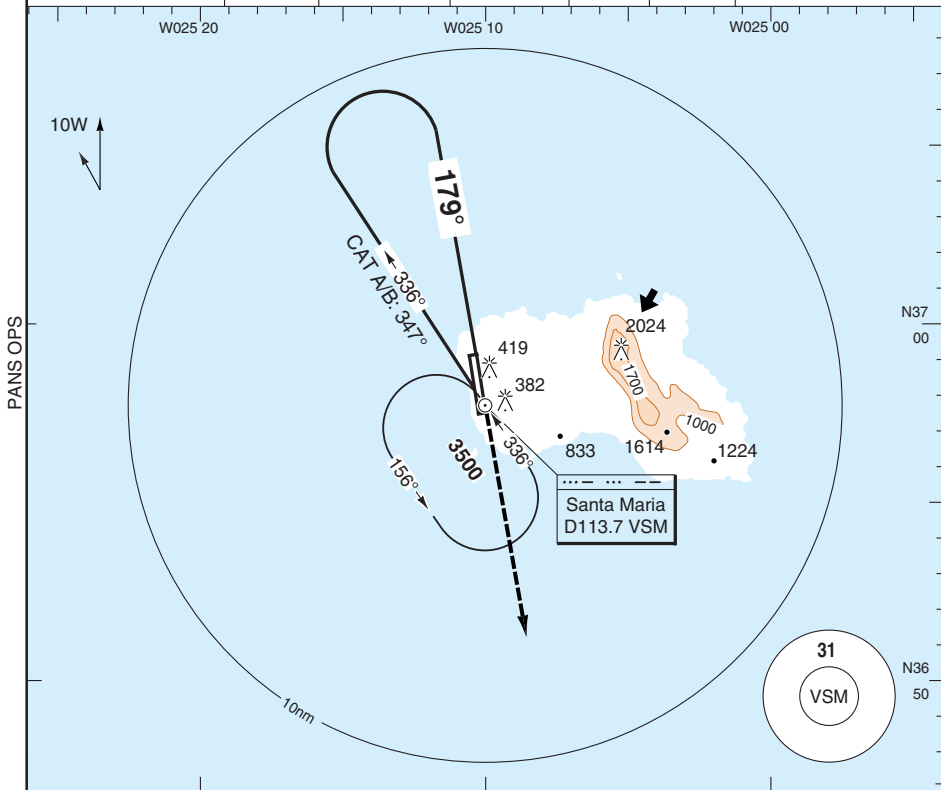
Change: Minima.

# VOR RWY 18

Santa Maria APP  
**119.1**

TWR  
**118.1**

VOR/DME **113.7 VSM** | FAT **179°** | TDZ Elev **302** | AD Elev **308** | TL **ATC** | TA **4000**



nm	11	10	9	8	7	6	5	4	3	2	1	0
ACFT	VOR		VOR <b>b</b>		Circling <b>a</b>		Circling <b>a b</b>					
A	<b>770</b> (490) 1800m		<b>770</b> (490) 2000m		<b>800</b> (490) 1.8km		<b>800</b> (490) 2.0km		<b>a</b> West of RWY <b>b</b> Non CDFA			
B					<b>810</b> (500) 1.8km		<b>810</b> (500) 2.0km					
C	<b>770</b> (490) 2200m		<b>910</b> (600) 2.4km		<b>910</b> (600) 2.4km							
D			<b>1010</b> (700) 3.6km		<b>1010</b> (700) 3.6km							

LDA 3048x60  
9999x196ft  
P 2.75° (29)



459

IALS

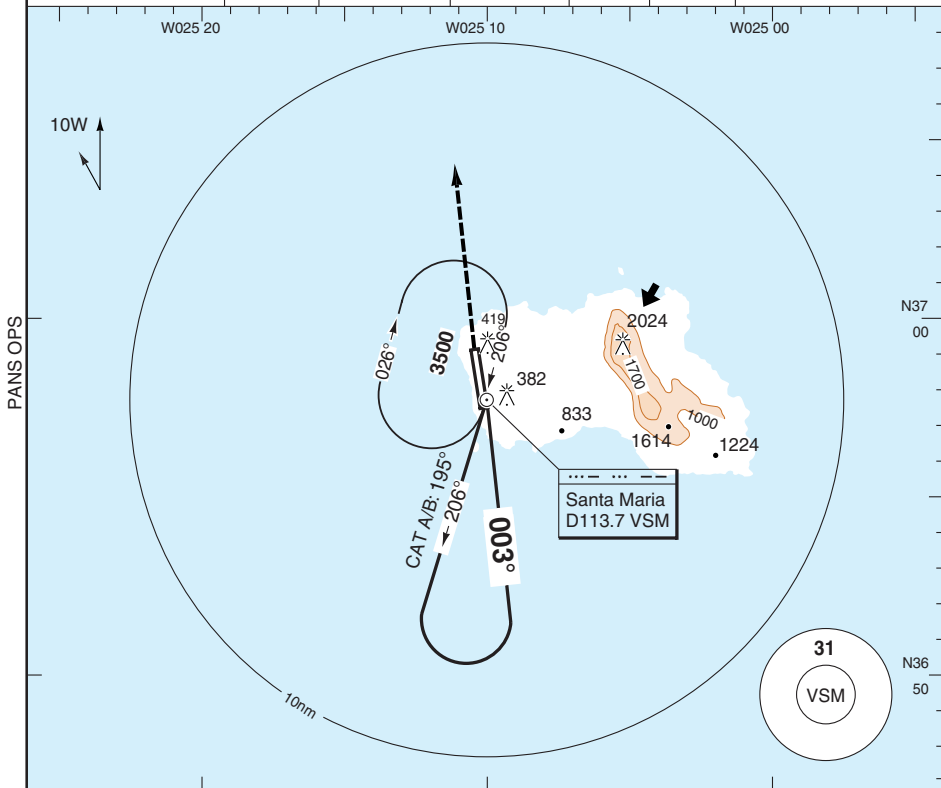


# VOR Y RWY 36

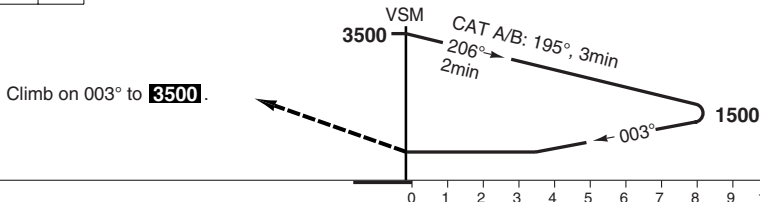
Santa Maria APP  
119.1

TWR  
118.1

VOR/DME 113.7 VSM | FAT 003° | THR Elev 283 | AD Elev 308 | TL ATC | TA 4000



MAPt VSM



ACFT	VOR	VOR <b>b</b>	Circling <b>a</b>	Circling <b>a b</b>
A	770 (490) 1800m	770 (490) 2000m	800 (490) 1.8km	800 (490) 2.0km
B			810 (500) 1.8km	810 (500) 2.0km
C	770 (490) 2200m	770 (490) 2200m	910 (600) 2.4km	910 (600) 2.4km
D			1010 (700) 3.6km	1010 (700) 3.6km

**a** West of RWY  
**b** Non CDFA

LDA 3048x60  
9999x196ft  
P 2.75° (29)



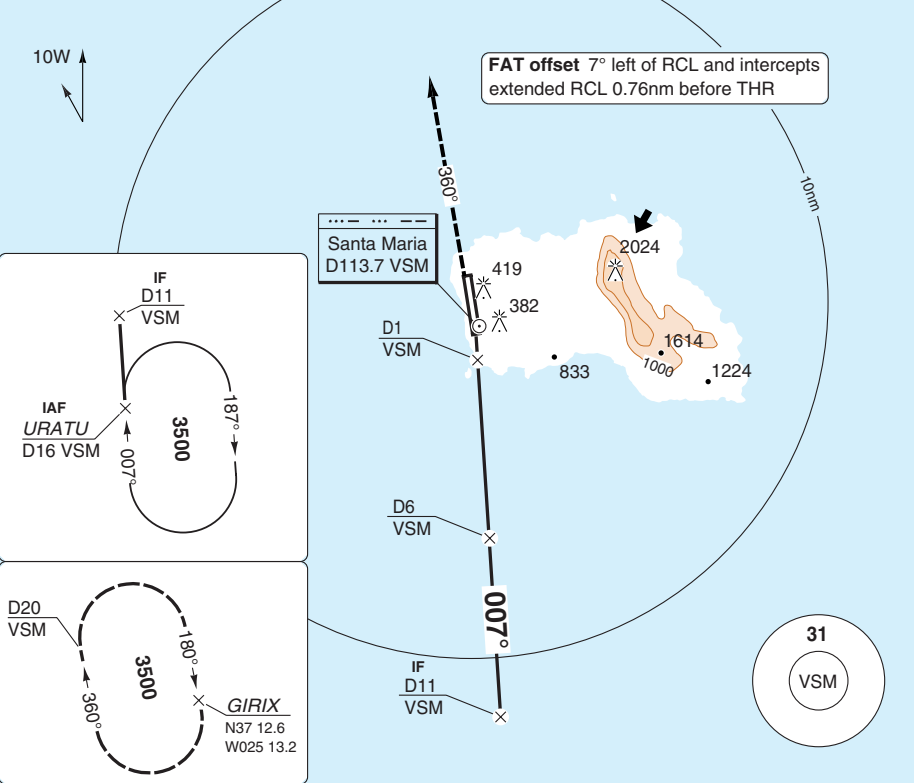
IALS

459

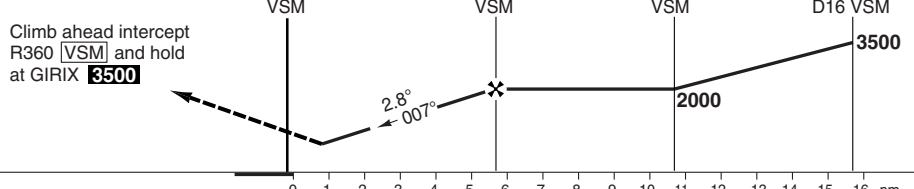
**VOR Z RWY 36**

Santa Maria APP 119.1	TWR 118.1
--------------------------	--------------

VOR/DME 113.7 VSM	FAT 007°	THR Elev 283	AD Elev 308	TL ATC	TA 4000
-------------------	----------	--------------	-------------	--------	---------



MAPt D1 VSM	D6 VSM	D11 VSM	URATU D16 VSM
-------------	--------	---------	---------------



ACFT	VOR+DME	Circling <b>a</b>	<b>a</b> West of RWY	DME VSM	2.8° ALT	LDA 3048x60 9999x196ft P 2.75° (29)
A	680 (400) 1400m	710 (402) 1.5km		6	2000	
B		810 (500) 1.6km		5	1710	
C		910 (600) 2.4km		4	1420	
D		1010 (700) 3.6km		3	1120	
				2	830	

GS	80	100	120	140	160
ROD 2.8°	390	490	580	680	780

© Navtech - lpaz04iaip00  
EU OPS

IALS  
459

Change: New chart.

**THIS CHART IS A PART OF NAVIGRAPH NDAC AND IS INTENDED FOR FLIGHT SIMULATION USE ONLY**

# JAR-OPS Landing Minima

# Azores SANTA MARIA

The following Minima is for Public Transport aircraft and conforms to JAR-OPS1 regulations.

STRAIGHT-IN APPROACH		C				D			
R/W	Procedure	DA/ MDA QNH ft	DH/ MDH QFE ft	RVR  m	RVR No ALS m	DA/ MDA QNH ft	DH/ MDH QFE ft	RVR  m	RVR No ALS m
18	ILS	490	200	700	1000	490	200	700	1000
18	LOC	590	300	1400	1800	590	300	1600	2000
18	VOR	780	490	1600	2000	780	490	1800	2000
36	VOR/DME Z	690	400	1400	1800	690	400	1600	2000
36	VOR Y	780	490	1600	2000	780	490	1800	2000

Notes:

CIRCLING		C			D		
R/W	Procedure	MDA QNH ft	MDH QFE ft	Vis m	MDA QNH ft	MDH QFE ft	Vis m
18	ILS, LOC (1)	910	600	2400	1010	700	3600
36	VOR/DME Z (1)	910	600	2400	1010	700	3600
	All Other Procs (1)	910	600	2400	1010	700	3600

Notes:

(1) West of aerodrome only.

TAKE-OFF		C		D	
Runway	Facilities	RVR	Vis	RVR	Vis
18 / 36	REDL and/or RCL	400	-	400	-
18 / 36	Nil (Day only)	500	-	500	-

Notes:

# JAR-OPS Landing Minima

# Azores SANTA MARIA

The following Minima is for Public Transport aircraft and conforms to JAR-OPS1 regulations.

STRAIGHT-IN APPROACH		A				B			
R/W	Procedure	DA/ MDA QNH ft	DH/ MDH QFE ft	RVR m	RVR No ALS m	DA/ MDA QNH ft	DH/ MDH QFE ft	RVR m	RVR No ALS m
18	ILS	490	200	700	1000	490	200	700	1000
18	LOC	590	300	1200	1500	590	300	1300	1500
18	VOR	780	490	1400	1500	780	490	1500	1500
36	VOR/DME Z	690	400	1200	1500	690	400	1300	1500
36	VOR Y	780	490	1400	1500	780	490	1500	1500

Notes:

CIRCLING		A			B		
R/W	Procedure	MDA QNH ft	MDH QFE ft	Vis m	MDA QNH ft	MDH QFE ft	Vis m
18	ILS, LOC (1)	710	410	1500	810	500	1600
36	VOR/DME Z (1)	710	410	1500	810	500	1600
	All Other Procs (1)	770	470	1500	810	500	1600

Notes:

(1) West of aerodrome only.

TAKE-OFF		A		B	
Runway	Facilities	RVR	Vis	RVR	Vis
18 / 36	REDL and/or RCL	400	-	400	-
18 / 36	Nil (Day only)	500	-	500	-

Notes: