

LPAR

Airport information:

Country: Portugal

City: ALVERCA

Coordinates: N 38° 53.1', W 009° 01.7'

Elevation: 11

Customs:

Fuel: Jet A1, AVGAS

RFF: CAT 7

hours: PPR HO

Runways:

Runway 04

Takeoff length: 2500, Landing length: 2500

Runway 22

Takeoff length: 2500, Landing length: NA

AERODROME

Alverca GND 138.8	TWR 119.225 122.1
-----------------------------	---------------------------------------

AD Elev 11 | ARP: N38 53.1 W009 01.7 | RFF: CAT 7 | AD HR: MON-FRI 0845-1645, HO PPR



THR Coordinates		
RWY 04	N38 52.4	W009 02.3
RWY 22	N38 53.6	W009 01.3



RWY	Slope	TORA m/ft	LDA m/ft	ALS	REDL	Additional
04	0	2500 / 8202	2500 / 8202	H-E ①	H	P 3° L/R
22	0	2500 / 8202	2500 / 8202	H-E ①	H	P 3° L/R

① 450m

GENERAL INFORMATION

1. AERODROME RESTRICTION

VFR flights west of aerodrome is not permitted.

2. WARNING

Bird hazard.

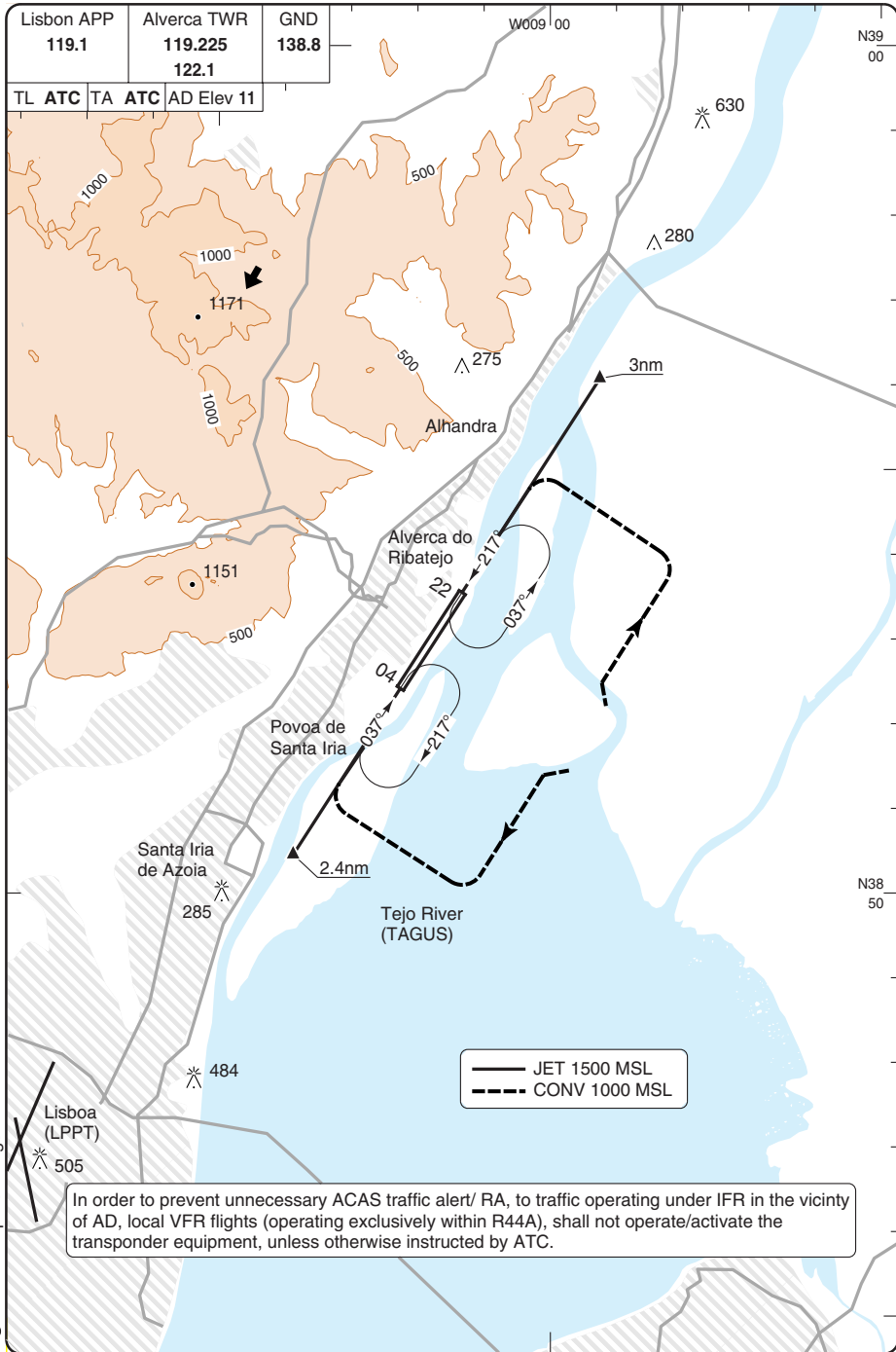
3. IFR PROCEDURES

3.1 Departures: Expect clearance to intercept appropriate Lisboa (LPPT) SID

3.2 Arrivals: Perform instrument APCH to Lisboa (LPPT) and request visual APCH when Alverca (LPA) in sight.

VISUAL APPROACH

Lisbon APP 119.1		Alverca TWR 119.225 122.1		GND 138.8
TL	ATC	TA	ATC	AD Elev 11



In order to prevent unnecessary ACAS traffic alert/ RA, to traffic operating under IFR in the vicinity of AD, local VFR flights (operating exclusively within R44A), shall not operate/activate the transponder equipment, unless otherwise instructed by ATC.

© Navitech - ipar01iaorg0

50 - 1

Reverse side blank

Change: New spec.

THIS CHART IS A PART OF NAVIGRAPH NDAC AND IS INTENDED FOR FLIGHT SIMULATION USE ONLY